

INFORMATION TO BE PUBLISHED

UNDER SECTION IV (1) (b) OF THE RIGHT TO INFORMATION ACT 2005



THE COMMISSIONER OF STATE TAXES

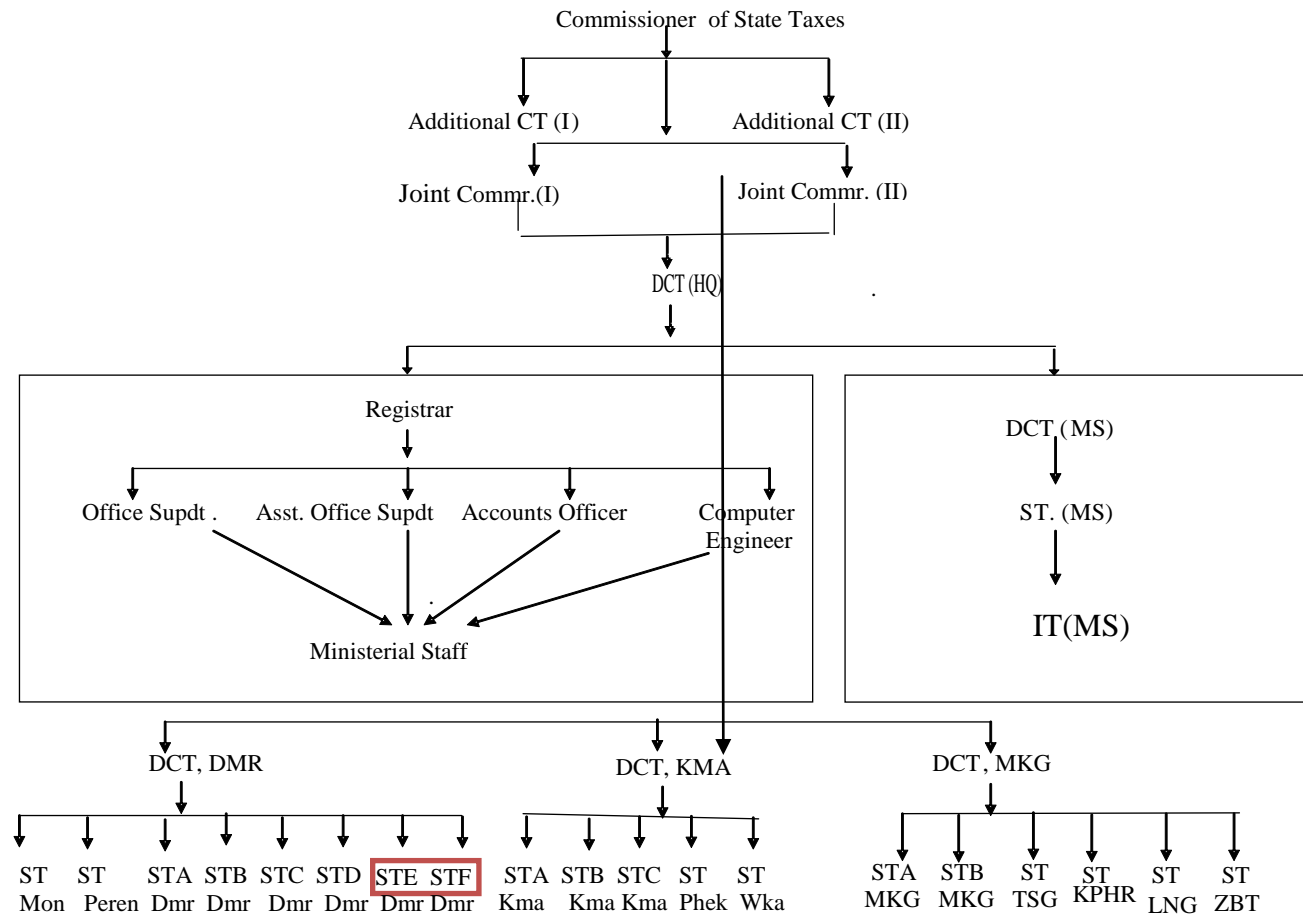
DEPARTMENT OF TAXES

Nagaland: Dimapur

2017 - 18

MANUAL -1

Organizational Chart/Organogram of the Department



History and Background of the the department was first created and functioned:

Till attainment of Statehood, the then Naga Hills District was an administrative Unit under Assam. Among others, Sales Tax Law of Assam was extended to Naga Hills effective from 2-2-1948. However, it is not available on record, to ascertain whether any revenue was collected from the Naga Hills District.

The Department of Taxes, Nagaland was established in August 1964, with the appointment of the Commissioner, Nagaland as the ex-officio Commissioner of Taxesvide Government Notification NO.SGN.182/63/29 (a) 14-6-63

A full-fledged Commissioner of Taxes was created on 20th August 1976, with its Headquarters at Kohima. In the same year, the Headquarter was shifted down to Dimapur, the Commercial hub of the State, for better tax administration. A post of Superintendent of Taxes was also created and an Officer from Assam Taxation Service was brought on deputation to start the functioning of the Department along with skeleton staff.

With the establishment of the Department, the question of adoption of the existing Taxation Laws of Assam as applied to the erstwhile Naga Hills District to the newly formed State by the Nagaland Adoption of Laws Order, 1965 were examined but due to some confusion the provisions of Taxation Laws could not be enforced by adoption/modification. Meanwhile, the Government took a decision to have its own Laws which led to the enactment of the following Taxation Laws.

1. The Nagaland Sales Tax Act, 1967.
2. The Nagaland Finance (Sales Tax) Act, 1967.
3. The Nagaland (Sales of Petroleum & Petroleum Products, including Motor spirit and Lubricants) Taxation Act, 1967.
4. The Nagaland Passenger and Goods Taxation Act, 1967.
5. The Nagaland Profession, Trade, Callings and Employment Taxation Act, 1968.

The above laws could not be implemented immediately, even after the assent of the President. It was only with the enactment of Rules in respect of each of the Acts in 1970, that all the above Acts, except the Passengers and Goods Taxation Act, were implemented in the State. The Revenue Collection made during the first year of implementation i.e., 1970-71 stood as under:

Year	NST	Pro.Tax	Am.Tax	Total(in lakhs)
1970-71	14.22	1.42	2.92	18.56

Brief Function of Every Branch:

Name of branches	Functions
1. General	<ol style="list-style-type: none">1. Statistics2. Election matters3. Training/Departmental examination4. Public relation with other department5. Liaison with central and other state department6. All miscellaneous matters of general nature.
2. Establishment Branch	<ol style="list-style-type: none">1.
3. Revenue branch	<ol style="list-style-type: none">1. Revenue budget and collection2. All matters related to revenue of the department
4. Legal branch	<ol style="list-style-type: none">1. All taxation matters including amendment of laws and orders2. Appeal and revision3. Issue of statutory forms and various other forms4. RTI
5. Audit branch	<ol style="list-style-type: none">1. Inspection2. Internal and external audit including PAC matters3. Certificate cases4. Vigilance/allegations and complaints
6. Computer branch	<ol style="list-style-type: none">1. Management of Tax-software application2. Management of Department's website3. All matters relating to computerization of the department.
7. Stationery branch	<ol style="list-style-type: none">1. Stock maintenance of non-statutory forms2. Postal services and stamp3. Management of conference hall and office library4. All matters related to stationery
8. Receipt and dispatch	<ol style="list-style-type: none">1. All matters relating to receipt and dispatches

Details of location, postal address, contact numbers, especially PIOs’:

SI No	Name	Designation	Phone No (O)	Mobile No
1	Shri. Kesonyu Yhome, IAS	Commissioner of State Taxes Nagaland: Dimapur.	03862- 248543 FAX- 226459	
2	Mr. Y. Mhathung Murry	Additional Commissioner of State Taxes (I) Nagaland: Dimapur.	03862-248535	9436003596
3	Mr. Wochamo Odyuo	Additional Commissioner of State Taxes (I) Nagaland: Dimapur.		9436007322
4	Mrs Kilang Naro	Joint Commissioner of State Taxes (II) Nagaland: Dimapur.	03862-248540	9436603922
5	Mrs. Imtilemla	Joint Commissioner of State Taxes (II) Nagaland: Dimapur.		9436019785
6	Mr. C Lima Imsong	Deputy Commissioner of State Taxes (HQ), Dimapur Nagaland. (SPIO)	03862-248542	9436003727
7	Mr. Imosong Imsong	Deputy Commissioner of State Taxes Dimapur Zone, Nagaland. (PIO)		9402696695
8	Mrs. N. Areni Patton	Deputy Commissioner of State Taxes Kohima, Kohima Zone : Nagaland. (PIO)	0370-2210468	7085169839
9	Miss Lirila Sangtam	Deputy Commissioner of State Taxes Mokokchung Zone, Mokokchung Nagaland. (PIO)	0369-226447	9436017204
10	Mr. Shechong Konyak	Deputy Commissioner of State Taxes, Mobile Squad Nagaland Dimapur. (PIO)		9089321877
11	Mr Bendangchuba	Superintendent of State Taxes, Mobile Squad, Dimapur Nagaland.		9436003727
12	Mrs. Orenponi Yanthan	Superintendent of State Taxes, Dimapur Ward A Dimapur Zone, Dimapur Nagaland.		9774574357
13	Mrs. Nitoli sema	Superintendent of State Taxes, Dimapur Ward B, Nagaland.		9436013329
14	Mr I. Mughato Aye	Superintendent of State Taxes, Ward D Dimapur Zone, Dimapur, Nagaland.		9436002309
15	Mrs. Chevetshu Nyuthe	Superintendent of State Taxes, Ward E Dimapur Zone, Dimapur Nagaland.		9436066620
16	Mr. V Dozo	Superintendent of State Taxes, Dimapur Ward F, Dimapur Zone, Nagaland.		7085285828
17	Mrs Tokatoli	Superintendent of State Taxes, Dimapur Ward F, Dimapur Zone, Nagaland.	03692-226447	9436012514
18	Mr Zulutemsu	Superintendent of State Taxes, Mokokchung Ward B, Mokokchung Nagaland.		9436011101
19	Mr. P. Muchu Khamniungan	Superintendent of State Taxes, Tuensang & Kiphire, Tuensang Nagaland. (PIO)	03861-220471	9436830155
20	Miss.L. Yanbeni	Superintendent of State Taxes, Ward A, Kohima Nagaland.		9402809264
21	Mr. Aowati	Superintendent of State Taxes, Kohima Ward B, Nagaland.		9436006583
22	Mr Poshutho	Superintendent of State Taxes, Kohima Ward C, Nagaland.		9856780808

23	Mr Atener Aier	Superintendent of State Taxes Wokha, Nagaland. (PIO)	0370-2290468	9612097040
24	Mr. Chingtuk Phom	Superintendent of State Taxes Phek, Nagaland. (PIO)	223189	9612126295
25	Mr Jimyang Imlong	Superintendent of State Taxes Zunheboto, Nagaland (PIO)	03867-220303	9436079834
26	Mr Toshi Yimjunger	Superintendent of State Taxes Mon, Nagaland. (PIO)		8415082165
27	Mrs. Chubanaro	Superintendent of State Taxes, Mokochung Ward A, Mokochung Nagaland.		9612432930
28	Mr. Imlisanen Longchar	Computer Engineer, O/O Commissioner of State Taxes, Dimapur Nagaland	0369-248132	9436015144
29	Mrs. Narola Imti	Account Officer O/O Commissioner of State Taxes, Dimapur Nagaland		

MANUAL-II

Powers and Duties of Officers

Sl. No.	Name	No. of Employees	Powers and Duties
1	Commissioner of State Taxes	1	Overall control and supervision of the functioning of the department including Appellate Authority under RTI Act, 2005
2	Additional Commissioner of State Taxes	2	a) Revenue, Legal, Audit, Computerization, All matters related to GST and all matters not listed. b) Looks after DDO and Accounts, Establishment, General and Stationery
3	Joint Commissioner of State Taxes, (I)	2	All matter relating to Revenue, Establishment, Administration, Legal, Audit, Computerization and all matters related to GSTN Looks after Accounts, General, Stationery and Stationery Forms.
4	Deputy Commissioner of State Taxes (HQ)	1	General Branch,, Revenue, Training Centre Management, RTI-PIO and All legal issues under GST
5	Deputy Commissioner of State Taxes	4	Certificate officer, DDO and APIO under RTI Act, 2005
6	Superintendent of	17	Assessing and Registering authority

	StateTaxes		
7	Registrar	1	Supervision and monitoring of all branches. Will deal with files from Establishment Branch, Revenue Branch, Accounts Branch, Computer Branch and all other resuuary issues
8	Computer Engineer and IT Nodal Officer	1	Nodal Officer on all IT matters including MMP-CT, GSTN etc. and Computerization
9	Office Superintendent	1	Legal Branch, General Branch and Audit Branch Looks after preparation of revenue target, MPR, transportation, issue of state and central statutory forms.
10	Account Officer	1	All Accounts and Establishment matters of the department
11	Statistical officer	1	All statistical maters of the department
12	Inspectors of State Taxes	45	Field inspection and preparation of reports Monitor the flow of goods movement both inward and outward as well as transit.

Functions and Duties

Details of powers and duties of different levels of employees:-

- (a) Commissioner of State Taxes:** The post of Commissioner is manned by an IAS officer. He is the head of the department. He exercises overall control and supervision for effective and smooth tax administration and enforcement of the Taxation Laws applicable in the State. The Commissioner is the Revisional Authority in the department and revises any order passed by any of his officers under the Acts and Rules in force and pass such orders as he may deem fit in accordance with the provisions of the tax laws. He is the link between the department and the Government. The Commissioner is also the Appellate Authority under the RTI Act, 2005.
- (b) Additional Commissioners of State Taxes:** Assists the Commissioner of Taxes and exercises such powers and functions as may be delegated to him under the Acts and Rules from time to time. The Additional Commissioner of State Taxes primarily looks after revenue and general establishments of the department. The senior most Additional Commissioner State Taxes functions as the head of the department in the absence of the Commissioner.

- (c) **Joint Commissioner of State Taxes:** Assists the Commissioner of State Taxes and Additional Commissioner of State Taxes and exercises such powers as may be delegated under the Acts and Rules enforced in the State. The Deputy Commissioner of State Taxes also acts as the Drawing & Disbursing officer of the Directorate.
- (d) **Deputy Commissioner of State Taxes:** Exercises control and supervision over the functioning of the Wards and District Superintendents and Inspectors under his Zones. He acts as the Certificate Officer for recovery of tax arrears under the Bengal Public Demand Recovery Act, 1913. He also acts as the Appellate Authority of the Zone. He/She monitors the performance of each Ward and District and ensures that the officers and staff function as per provisions of the Taxation laws. He/She also acts as the Drawing and Disbursing officer of the Zonal office. He/She also exercises such powers as may be delegated to him under the provisions of the various taxation laws enforced in the State.
- (e) **Superintendent of State Taxes:** Exercises such power and functions as may be delegated under the provisions of Taxation Laws enforced in the State. He/She acts as the assessing as well as registering officer of the Ward or District. He/She also monitors filing of tax returns and payment of tax by the dealers. He/She also ensures that all the liable dealers under his/her jurisdiction are registered and carries on business as per the provisions of Tax laws enforced in the State. The Superintendent of State Taxes acts as the Drawing and Disbursing officer and also represents the department at the District level. Superintendent of State Taxes maintains records of registration certificate issued and cancelled, Daily Collection Register, Issue and Stock Register of Declaration and Statutory Forms, and compiles the monthly collection statement. He/She enforces the tax laws and ensures tax compliance by all concerned.
- (f) **Inspector of State Taxes:** Inspectors are the field officers of the department. They function under the direct supervision of the Superintendents of State Taxes of the Ward/District to which they are attached or posted. They keep vigil on the business activities of the tax payers. They also man the Taxation Check Gates in the State. They are responsible for inspection and filing of reports pertaining to the business transactions of dealers at regular intervals. They also verify the accuracy of the information disclosed by the dealers in the applications for registration and also investigate cases relating to evasion of tax and report to the Ward/District Superintendents of Taxes. They also maintain Survey Register in respect of the Ward/District.
- (g) **Checker:** Since the abolition of Check Posts after the introduction of GST since 1st July, 2017, all the Checkers previously employed at the Check post are attached to the Commissioner of State Taxes temporarily.
- (h) **Head Assistant:** Head Assistant heads ministerial staff of all the districts and zone offices. They control and supervise the functioning of the ministerial staff for smooth disposal of office works.
- (i) **UDA:** UDA looks after the accounts and also act as the cashier of the District and Zonal office and also assist the Head Assistants in all establishment and other general matters.
- (j) **LDA cum Computer Assistant:** They maintain the dealer's proceeding files and flag it to the controlling officers and keep the proceeding files updated in time. They are the data entry operators of the district and ward offices.
- (k) **Typist:** All official matters are being typed by the typists. They ensure accuracy and clean typing of officials Letter.
- (l) **Driver:** Drivers are attached with officers who are attached with official vehicles. They ensure that the vehicles are clean and in good condition at all time to drive the vehicles for bona-fide official duty
- (m) **Peon:** Peons are responsible for handling office files .They also attend the officers.
- (n) **Sweeper:** Sweeper sweeps the office regularly and keep the office neat and clean.

(o) **Chowkider:** Chowkider handles the office keys and keep the office open and closed as per office timing and ensures security of the office.

(p) **Mali:** Mali takes care of the gardens in the office compound.

Ministerial staff in the Directorate:

(a) **Registrar:** He co-ordinates the activities and functioning of the ministerial staff attached to different branches in the Directorate. He supervises the movement of the files and ensures maintenance of proper records and receipt of letters. He acts as the dictionary of the Directorate and assists the senior officers on all important official matters.

(b) **Office Superintendent:** The Office Superintendent assists the Registrar in smooth functioning of the Directorate. He ensures accuracy of all accounts matters in the Directorate. He prepares the Department's budget, monitors the expenditure of the department and ensures regularity and attendance of the ministerial staff.

(c) **Assistant Office Superintendent:** He works out and prepares the revenue target, maintain and compile the revenue collection figures of the department, monitor the MPR of the districts and ward offices, monitor the POL and annual maintenance of the department's vehicle and also monitor and maintain the stock registers of statutory forms and other state forms.

(d) **Accounts officer:** Accounts officer monitor and assist the department in all account and establishment matters to maintain accuracy of records at all time.

(e) **Senior Accountant:** He assists the Office Superintendent in all accounts matters. He prepares pay and allowances and performs Treasury duties. He is responsible for drawal and disbursement of bills in the Directorate.

(f) **Personal Secretary to Commissioner:** He personally assists the Commissioner for smooth disposal of official works

(g) **Computer Engineer:** He heads the computer cell and ensures its safe and smooth functioning. He also looks into all matters relating to computerization.

MANUAL-III

Procedure followed in decision making process including channels of supervision and accountability.

Job description and responsibilities of each level of staff

Sl. No.	Name and Designation	Work assigned/Functions
1	Shri.Kesonyu Yhome, IAS, Commissioner of State Taxes	Overall control and supervision of the functioning of the department including Appellate Authority under RTI Act, 2005
2	Shri. Y. Mhathung Murry, Additional Commissioner of State Taxes (I)	Revenue, Legal, Audit, Computerization, All matters related to GST and all matters not listed
3	Shri. Wochamo Odyou, Additional Commissioner of State Taxes(II)	Looks after Establishment, General GSTN, Legal, Audit, and Stationery

4	Smti Imtilemla, Joint Commissioner of StateTaxes, (II)	All matter relating to Administration, Computerization,Establishment, and all matters related to DDO and Accounts.
5	Smti Kilangnaro Joint Commissioner of StateTaxes, (I)	Looks after Accounts, General, Revenue Stationery and Stationery Forms.
6	Shri C Lima Imsong, Deputy Commissioner of State Taxes (HQ)	General Branch, Revenue, Training Centre Management, RTI-SPIO and All legal issues under GST
7	Registrar	Supervision and monitoring of all branches. Will deal with files from Establishment Branch, Revenue Branch, Accounts Branch, Computer Branch and all other resuary issues
8	Shri. Imlisanen, Computer Engineer and IT Nodal officer	Nodal Officer on all IT matters including MMP-CT, GSTN etc. and Computerization
9	Office Superintendent	Legal Branch, General Branch and Audit Branch Looks after preparation of revenue target, MPR, transportation, issue of state and central statutory forms.
10	Smti. Narola ImtiAccount Officer	All Accounts and Establishment matters of the department
11	Statistical officer	All statistical maters of the department
12	Asstt. Office Supdt	Legal Branch, General Branch and Audit Branch
13	Asstt. Office Supdt.	Establishment, Works Programme, and All legal issues under GST
Deputy Commisioner of State Taxes, Dimapur Zone, Dimapur		
14	Shri Imosong Imsong, DeputyCommissioner of StateTaxesDimapur Zone	Additional Charge of Dimapur Zone. Certificate officer, DDO , APIO under RTI Act, 2005
15	Shri Zulutemsu, Suptdt. of State Taxes,Dimapur Ward-	Assessing and Registering authority
16	Smti Nitoli, Suptdt. of StateTaxes,Dimapur Ward-B	Assessing and Registering authority
16	Smti Tokatoli, Suptdt. of StateTaxes,Dimapur Ward-C	Assessing and Registering authority
17	Suptdt. of StateTaxes, Peren	Assessing and Registering authority and APIO under RTI Act, 2005
18	Shri Mughato, Suptdt. of StateTaxes,DimapurWard-D	Assessing and Registering authority
19	Shri Jimyang ImlongSuperintendent of State	Assessing and Registering authority

	Taxes, WardE	
20	Shri. Muchu Khiam, Superintendent of State Taxes Dimapur Ward F	Assessing and Registering authority of Petroleum & Amusement Tax
21	Inspectors	Field inspection and preparation of reports.
Deputy Commissioner of State Taxes, Kohima Zone, Kohima		
22	Smti Areni Patton, Deputy Commissioner of StateTaxes.	Certificate officer, DDO and PIO under RTI Act, 2005
23	Smti Yanbeni, Suptdt. of StateTaxes, Kohima	Assessing and Registering authority
24	Smti Orenponi,Supdt. of State Taxes, Kohima Ward-A,	Assessing and Registering authority
25	Shri Pushotho Supdt. of State Taxes, Kohima Ward	Assessing and Registering authority
26	Shri. AtenerSuperintendent of StateTaxes,Wokha	Assessing and Registering authority, DDO and APIO under RTI Act, 2005
27	Shri V. Dozo, Suptdt. of State Taxes,Phek	Assessing and Registering authority, DDO and APIO under RTI Act, 2005
28	Inspectors	Field inspection and preparation of reports.
Deputy Commissioner of State Taxes, Mokokchung Zone, Mokokchung		
30	Smti Lirila Sangtam Deputy Commr of StateTaxes, Mokokchung	Certificate officer, DDO and PIO under RTI Act, 2005
31	Shri Aowati, Supdt. of State Taxes	Assessing and Registering authority
33	Smti. Chubanaro Suptdt. of StateTaxes, Mokokchung Ward A	Assessing and Registering authority
33	Shri Chingtuk Phom,Supdtt.of State Taxes,Tuensang,Kiphere and Longleng	Assessing and Registering authority, DDO and APIO under RTI Act, 2005
34	Chevitsu Nyuthe Superintendent of State Taxes,Zunheboto	Assessing and Registering authority, DDO and APIO under RTI Act, 2005
35	Inspectors	Field inspection and preparation of reports.
Deputy Commissioner of State Taxes (MS), Dimapur		
38	Shri Shechong Nekong, Deputy Commissioner of State Taxes (MS)	Supervise the functioning of the Mobile Squad and APIO under RTI Act, 2005
39	Shri Bendangchuba Suptdt. of StateTaxes (MS)	Conduct search and seizures, Assist the Deputy Commissioner of State Taxes (MS)
40	Inspectors,	Assist Superintendent of State Taxes and Deputy Commissioner of State Taxes.

MANUAL-IV

The norms set up for discharging of its functions

Since the inception of the Department, the Department has been extending all possible assistance to the Tax Payers and compliance with the provisions of the GST Laws Enforced in the State are encouraged. From time to time, the Department also publishes GST FAQs in all local dailies for general information and compliance by all the tax payers.

Manner in which different types of works are attended to (e.g. ordinary, Urgent and confidential matters:

The functions of the department are quasi-judicial. All matters relating to implementation of various taxation laws enforced in the state are attended to as per the provision of the Acts and Rules and are classified as confidential matters. Updating of RTI Manual and furnishing information under the RTI Act, 2005 and other important correspondences with state and central government offices are attended to on priority basis depending on the nature of the case and are classified as urgent matters. Other normal and regular correspondences are classified as routine matters.

MANUAL-V

Acts and Rules, Regulations, Instructions, Manuals and Records held by it or under its control or used by its employees for discharging its functions:

(a) Goods and Services Tax Act, 2017

(b) The Nagaland (Sales of Petroleum & Petroleum Products including Motor Spirit and Lubricants) Taxation Act, 1967 and Rules, 1970;

(b) The Nagaland Professions Trades, Calling and Employment Taxation Act, 1968 and Rules made thereunder;

In addition, the Nagaland Government Servant Conduct Rules, 1968; the Nagaland Service (Discipline and Appeal) Rules, 1967; Leave Rules; F.R./S.R., R.O.P. Rules, Central Treasury Rules, Pension Rules and other Government standing orders and instructions issued from time to time are followed by its employees for discharge of official duties and functions.

MANUAL-VI

A Statement of Categories of Document that are Held by it or Under its Control.

The department maintains files and documents that can be classified 'secret' 'confidential' and 'routine' are kept in the custody of the various branches as per internal work allocation. Correspondences relating to proper and better administration of the various taxation laws enforced in the state and smooth functioning of the department, notifications, circulars, Office memorandum etc., are classified as Administrative. Matters relating to appointment transfer and posting, service books, APAR etc., are classified as Establishment.

Sl. No	Nature/ Category of the Document	Name of the Document	Procedure to obtain the Document	Held by / Under Control of
	Secret, Confidential and Routine	Notifications, Circulars, Office Memorandum	By spl courier	Commissioner

MANUAL – VII

The particulars of any arrangements that exists for consultation with or representation by the members of the public in relation to the formulation of its policy or implementation thereof:

The department, being a technical and quasi-judicial in nature implements and enforces the tax laws and ensures better tax collection. The department gives its views as and when sought for and also suggests and proposes to the government for suitable amendment of the Act and Rules in the interest of public revenue. We have a common GST portal, Pan India. For better tax services, the department has developed its own website for delivery of e-services to the tax payers and the citizens. It has a helpdesk to attend queries relating to any tax matters.

MANUAL – VIII

A statement of the Boards, Councils, Committees and other bodies consisting of two or more persons constituted as its part or for the purpose of its advice, and as to whether meetings of those Boards, Councils, Committees and other bodies are open to the public, or the minutes of such meetings are accessible to the public:

The department has two levels of DPC s. The DPC for the gazette officers consist of the Chairman of the NPSC as Chairman, Finance Commissioner or his nominee as member, Secretary, P&AR or nominated by the Secretary P&AR as member and Commissioner of Taxes or his subordinate officer as member secretary. The DPC for the non-gazetted subordinate staffs consists of Commissioner of Taxes as Chairman, one departmental senior officer as member secretary, representative from P&AR as member and representative from Finance department as member.

The department also constitutes Selection Boards from time to time for appointment of various posts in the department. In addition, Departmental Screening Committees are also constituted from time to time to examine and clear grant of financial up gradation benefits to its employees under A.C.P Scheme.

Manual –IX

A Directory of its Officers and Employees:

<i>Sl. No.</i>	<i>Name</i>	<i>Designation</i>	<i>Place</i>	<i>Mobile number</i>
1	Shri. Kesonyu Yhome, IAS	Commissioner of StateTaxes	Dimapur	
2	Shri. Y. Mhathung Murry	Addl. Commr. of StateTaxes (I)	Dimapur	9436003596
3	Shri. Wochamo Odyuo	Addl. Commr. of StateTaxes (II)	Dimapur	9436012291
4	Smti. Kilangnaro	Jt.Commr. of StateTaxes (I)	Dimapur	9436012177
5	Smti Imtilemla	Jt.Commr. of StateTaxes (II)	Dimapur	9436019785
6	Shri. C Lima Imsong	Deputy Commissioner of StateTaxes(HQ)	Dimapur	9436003727
7	Smti. Narola Imti	Accounts Officer	Dimapur	9436060966
8	Shri. Imlisanen Longchar	Computer Engineer	Dimapur	9436015144
9	Shri. Sukdew Kumar Chetri	Steno Gr-II Sr.	Dimapur	
10	Shri. Rongpangmeren	Steno Gr-III	Dimapur	9436600751
11	Smti. Imtilangla Lkr	Steno (Gr-III)	Dimapur	9863993232
12	Smti. Apokla Jamir	Steno Gr-I on attachment	Dimapur	
13	Shri. Vingulie Mepfhuo	UDA	Dimapur	
14	Smti. Flora	LDA	Dimapur	8794215144
15	Shri Mhabemo	UDA	Dimapur	9436267403
16	Shri. Shime Jamir	LDA (Contract)	Dimapur	

17	Smti. J.Zuchano Kikon	LDA (Contract)	Dimapur	9402433736
18	Smti. Eunice Yepthomi	LDA (Contract)	Dimapur	8415026261
19	Shri. Subonrmeren Ao	LDA (Contract)	Dimapur	9856981973
20	Smti. Nikmenmenla Changkiri	LDA (Contract)	Dimapur	9811698405
21	Shri. Wingambo	LDA (Contract)	Dimapur	9402042454
22	Shri. Visielhou Chupuo	LDA (Contract)	Dimapur	9774610379
23	Shri. Zasivilie Chasie	Analyst	Dimapur	
24	Smti. Bendangkokla	Typist Gr-III	Dimapur	9862438773
25	Kmr. Bamzeu Liegise	Typist Gr-I	Dimapur	9089686169
26	Kmr. Vitoungu-ü Chasie	Typist. Gr.-II	Dimapur	
27	Shri. Alemwati	Duftry	Dimapur	9436642595
28	Shri. Tongpanglepden	Peon	Dimapur	
29	Shri. Lenkhomang	Peon	Dimapur	8974455968
30	Shri. Asakho	Peon	Dimapur	
31	Shri. Tsito	Peon	Dimapur	
32	Shri. Kidiutso	Peon	Dimapur	
33	Smti. Lily	Peon	Dimapur	9615548268
34	Smti. Zubeni	Peon	Dimapur	9612500277
35	Shri. Thilixu Aye	Peon	Dimapur	
36	Shri. Kevilhoulie Angami	Driver	Dimapur	
37	Shri. Solomon	Driver	Dimapur	
38	Shri. Jasper	Driver	Dimapur	
39	Shri. Roly	Driver	Dimapur	
40	Shri. Sashiyongdang	Driver	Dimapur	
41	Shri. Pranab Phonglo	Driver	Dimapur	
42	Shri. Nnio Mirry	Driver	Dimapur	
43	Shri. Meyesunep	Chowkider	Dimapur	
44	Shri. Prem Bahadur	Driver (MS)	Dimapur	
45	Shri. Tsanhungo Murry	Driver(MS)	Dimapur(MS)	
46	Shri. Suresh Thapa	Driver(MS)	Dimapur(MS)	
47	Shri.Orenthung	Driver (MS)	Dimapur(MS)	
48	Shri.L.Shechong Konyak	Deputy Commissioner of State Taxes	Dimapur(MS)	9402848366
49	Shri. Bendangchuba	Superintendent of State Taxes	Dimapur (MS)	9206150205
50	Smti Elika Swu	Inspector of State Taxes	Dimapur (MS)	8575969722
51	Shri Merenchuba	Sr. Inspector of State Taxes	Dimapur (MS)	9856894566

52	Shri Yanrenthung	Sr. Inspector of Taxes	Dimapur (MS)	9862875382
53	Shri Langphong Wanmai	Inspector of Taxes	Dimapur (MS)	9862853466
54	Smti. Liyingbeni Kikon	Inspector of Taxes	Dimapur (MS)	8794674726
55	Shri Nchumbemo	U.D.A.	Dimapur (MS)	9612683532
56	Kmr. Chumbeni Murry	UDA	Dimapur (MS)	8014427279
57	Smti.Wabangmenla	L.D.A	Dimapur (MS)	9436601792
58	Smti. Nisheli Awomi	LDA (Contract)	Dimapur (MS)	
59	Smti. Inatoli Sema	LDA (Contract)	Dimapur (MS)	
60	Shri. Kezhangulie Kire	LDA (Contract)	Dimapur (MS)	
61	Shri. Vikato	LDA (Contract)	Dimapur (MS)	
62	Shri. Irangteing	LDA (Contract)	Dimapur (MS)	
63	Shri. Albert Mero	LDA (Contract)	Dimapur (MS)	
64	Shri. Seve Koza	LDA (Contract)	Dimapur (MS)	
65	Shri. Shri. Sakumongba Longchar	LDA (Contract)	Dimapur (MS)	
66	Shri. Watimeren	LDA (Contract)	Dimapur (MS)	
67	Shri.Pongsen	Checker	Dimapur (MS)	9856583843
68	Shri.Imtiyanger	Checker	Dimapur (MS)	9402988334
69	Shri.Sentiyanger	Checker	Dimapur (MS)	9436178667
70	Shri. K.Tochi	Checker	Dimapur (MS)	9402009921
71	Shri.Merentemjen	Checker	Dimapur (MS)	9436424665
72	Shri.Aman Konyak	Checker	Dimapur (MS)	9612315627
73	Shri.R. Odyuo	Checker	Dimapur (MS)	9436260943
74	Shri.Arenjenba.	Checker	Dimapur (MS)	8575770182
75	Shri.Velato Thira	Checker	Dimapur (MS)	9856309030
76	Shri.Nievizokho	Checker	Dimapur (MS)	9856681165
77	Shri.Langlem Konyak	Checker	Dimapur (MS)	9436602516
78	Shri.Mhasilhousier	Checker	Dimapur (MS)	9856359668
79	Shri.Limatongzuk	Checker	Dimapur (MS)	9774195956
80	Shri. Anato	Checker	Dimapur (MS)	9856827914
81	Shri. Rangteileu	Checker	Dimapur (MS)	9436211328
82	Shri. Hotovi Achumi	Checker	Dimapur (MS)	9615936853
83	Smti. N.Hetoli	Checker	Dimapur (MS)	9436425394
84	Shri. Z. Vikato	Checker	Dimapur (MS)	8014481152
85	Shri. Moanungba	Checker	Dimapur (MS)	9436267728
86	Shri.Shempha Konyak	Checker	Dimapur (MS)	9436446813
87	Shri.Nikheto	Checker	Dimapur (MS)	8731888545
88	Shri. Hetovi Chishi	Checker	Dimapur (MS)	
89	Shri. Hotolu Z.Yeptho	Checker	Dimapur (MS)	
90	Shri. Jangkhokam	Peon	Dimapur (MS)	8729978969

91	Shri.Imnasashi	Peon	Dimapur (MS)	
92	Shri. Wochumo Odyuo	Peon	Dimapur (MS)	9612191896
93	Shri. Atoi	Peon	Dimapur (MS)	9436267501
94	Shri Akheto	Peon	Dimapur (MS)	
95	Shri Artong	Peon	Dimapur (MS)	9089332022
96	Shri Chingtuk Phom	Superintendent of State Taxes	Tuensang	9612126295
97	Smti I.Imsejungla	Inspector of State Taxes	Tuensang	8575017641
98	Shri. Thsidilong	Inspector of State Taxes	Tuensang	9612171167
99	Shri. Boska K Yeputhomi	Inspector of State Taxes	Tuensang	8413002226
100	Shri. Kekhrieselie Khezhe	Inspector of State Taxes (Contract)	Tuensang	
101	Shri Nzanbemo	HA	Tuensang	9436261441
102	Shri. Bimomo	U.D.A.	Dimapur	9862671759
103	Shri.Rangsingba Sangtam	U.DA	Tuensang	9402644859
104	Shri Likhumse Sangtam	LDA	Tuensang	9612361447
105	Shri Pesing Khamniungam	LDA Contract	Tuensang	8974666147
106	T. Chimkila	Typist	Tuensang	9089780822
107	Shri C. Sulim	Driver	Tuensang	9402633991
108	Shri I. Moba	Peon	Tuensang	9612969300
109	Shri. Khoniyemjong	Peon	Tuensang	8732074774
110	Shri.L.Shingnia Khamniungam	Peon	Tuensang	8732074774
111	Shri. L. Longshong Phom	Peon	Tuensang	9612098336
112	Shri Yangseri	Chowkidar	Tuensang	9862414406
113	Shri.TetnsomongJ. Sangtam	Peon	Kiphire	8732096695
114	Shri C. Thango Chang	Sweeper	Tuensang	8415824975
115	Shri. Vekhozo Dozo	Superintendent of State Taxes	Phek	9856668161
116	Shri Souvitho Nyusou	Inspector of State Taxes	Phek	986755826
117	Shri. T.E. Kisume Yimchunger	H.A	Phek	
118	Smti Anungba	UDA	Phek	9612135801
119	Smti Neisakhonuo	LDA	Phek	9856201908
120	Smti. Mirelo	LDA Contract	Phek	9774698227
121	Smti Zutsulo	Typist	Phek	9089870955
122	Shri Kekwengolo	Peon	Phek	8974267615
123	Shri Kedoutso	Chowkidar	Phek	90896022026
124	Shri Zonie	Sweeper	Phek	8974925739
125	Shri Kope Krono	Driver	Phek	96123674421
126	Shri. Devoto Venuh	Peon	Phek	9862799836
127	Shri. Atener Aier	Superintendent of State Taxes	Wokha	9612097040

128	Smti Viki Sumi	Inspector of State Taxes	Wokha	9615086796
129	Shri. T.Chunbemo Kikon	Inspector of State Taxes	Wokha	9089731542
130	Shri.L. Ashio Murry	H.A	Wokha	9612973150
131	Smt. Pfucukha-u Wetsah	U.D.A	Wokha	9436077893
132	Shri. T. Ademo Murry	LDA	Wokha	8729998177
133	Smti.D. Meribeni Patton	LDA Contract	Wokha	8974248742
134	Shri. Savi Koza	LDA Contract	Wokha	9856848641
135	Shri .W. Orenthung Tungoe	Typist	Wokha	9862938489
136	Shri.Mopa Konyak	Driver	Wokha	
137	Shri C. Chumchamo Patton	Peon	Wokha	9862259355
138	Shri Ezanyimo Ngullie	Peon	Wokha	9436816132
139	Shri Lobeni Lotha	Sweeper	Wokha	9862538550
140	Smti. Zareni Lotha	Chowkidar	Wokha	94026439917
141	Smti. Chevitsu Nyuthe	Superintendent of State Taxes	Zunheboto	9436066620
142	Myingthungbemo Patton	Inspector of State Taxes	Zunheboto	9862028128
143	T. Yapangla	H.A.	Zunheboto	9436261442
144	Shri. Keneisetuo Ziekhru	U.D.A	Zunheboto	8413041940
145	Smti Gwachu Kagan	Typist	Zunheboto	9402432653
146	Toil Yeptho	LDA	Zunheboto	8980607650
147	Bendanglemla	LDA	Zunheboto	2402207843
148	Shri Kughaho Sema	Peon	Zunheboto	8730935784
149	Smti. S. Liho Sumi	Peon	Zunheboto	8575822590
150	Shri Kakheho Sema	Peon	Zunheboto	
151	Smti.Mugatoli Sumi	Chowkidar	Zunheboto	9089853125
152	Shri. K. Semato Sumi	Sweeper	Zunheboto	8794006832
153	Shri Y. Toshi Yimchunger	Superintendent of State Taxes	Mon	8729833797
154	Shri Koktiba Sangtam	Inspector of State Taxes	Mon	8974663875
155	Shri. Taushie	Inspector of State Taxes	Mon	8612010167
156	Smti.D. Apokla	H.A.	Mon	9436431013
157	Shri. Satminthang	UDA	Mon	9436832351
158	Shri. Ahon Konyak	LDA (Contract)	Mon	
159	Smti. Pamphe Konyak	LDA (Contract)	Mon	
160	Smti Linyu Konyak	Typist	Mon	8119848268
161	Shri. Seyam Konyak	Chowkidar	Mon	
162	Shri. Mambin Konyak	Peon	Mon	8731803693
163	Shri. Heyam	Peon	Mon	
164	Shri. Longtha Phom	Office Peon	Mon	8413809555
656	Smti. Pongshum Konyak	Sweeper	Mon	9612215362

166	Smti Lirila Sangtam	Deputy Commissioner of State Taxes	Mokokchung	9436017204
167	Shri. Aowati	Superintendent of State Taxes	Mokokchung	9436006583
168	Smti.Chubanaro	Superintendent of State Taxes	Mokokchung	9862419377
169	Shri. Alemwabang	Inspector of State Taxes	Mokokchung	7005805561
170	Smti. Roselinda Longchar	Inspector of State Taxes	Mokokchung	8119840260
171	Smti. Yanthrongla Yimchunger	Inspector of State Taxes	Mokokchung	8414850420
172	Shri Bendangtemsu	Inspector of State Taxes	Zunheboto	7005423544
173	Shri. Seyiekhrielie Kuotsu	Inspector of State Taxes (Contract)	Mokokchung	9612509095
174	Shri. Pekuovotuo Angami	Inspector of State Taxes (Contract)	Mokokchung	9615148658
175	Smti. Akala Jamir	H.A	Mokokchung	9436607279
176	Smti Gloria Yanthan	UDA	Mokokchung	8414955298
177	Kmr Imtisenla	UDA	Mokokchung	8413053846
178	Shri.Lungyisappe	LDA (Contract)	Mokokchung	8974397171
179	Shri Imkum Pongener	L.D.A Contract	Mokokchung	8014086201
180	Shri Bendangkokba	L.D.A Contract	Mokokchung	9612539681
181	Shri. T.Temjen Jamir	Driver	Mokokchung	9612937222
182	Tsuktimongba	Driver	Mokokchung	8575421521
183	Shri Chuba Jamir	Office Peon	Mokokchung	9856967465
184	Smti. Sashimongla	Office Peon	Mokokchung	9089442543
185	Smti. Keweko Marhu	Office Peon	Mokokchung	8014824471
186	Shri. Chubangantet	Office Peon	Mokokchung	9612633792
187	Shri .Temjensowa	Chowkidar	Mokokchung	9856538389
188	Smti.Imlirenla	Sweeper	Mokokchung	8794974494
189	Shri. Bendangkumba Ao	Peon	Mokokchung	8131859271
190	Shri. O Among Sanglir	Peon	Mokokchung	9856189871
191	Shri Imosong Imsong	Deputy Commissioner of State Taxes	Dimapur	9402696695
192	Shri Jimyang Imlong	Superintendent of State Taxes	Dimapur	9436079834
193	Shri Zulutemsu	Superintendent of State Taxes	Dimapur	9436011101
194	Smti. Tokatoli Sohe	Superintendent of State Taxes	Dimapur	9436112514
195	Shri I.Mughato	Superintendent of State Taxes	Dimapur	9436002309
196	Shri.P.Muchu Khiamniungam	Superintendent of State Taxes	Dimapur	9436830155
197	Smti. Nitoli Sema	Superintendent of State Taxes	Dimapur	9615223847
198	Shri. Keyichetlube	Senior Inspector of State Taxes	Dimapur	9615101737
199	Shri. H.Nganwang Konyak	Sr. Inspector of State Taxes	Dimapur	9436609506
200	Shri B.Sangro Aier	Inspector of State Taxes	Dimapur	9436602972
201	Shri. E.Onshao Phom	Inspector of State Taxes	Dimapur	9862843216

202	Smti. Rongsenkala	Inspector of State Taxes	Dimapur	8974195915
203	Shri. Thomas Wilson	Sr. Inspector of State Taxes	Dimapur	9436660777
204	Smti. Mhabeni Lotha	Inspector of State Taxes	Dimapur	9615624697
204	Smti Ramsangla	Inspector of State Taxes	Dimapur	985647126
205	Smti. Moasangla	Inspector of State Taxes	Dimapur	9856040970
206	Smti. Richanaro	Inspector of State Taxes	Dimapur	9774001103
207	Smti. M. Chibeni Lotha	Inspector of State Taxes	Dimapur	8974195915
208	Shri. N. Irangsalung	Inspector of State Taxes	Dimapur	9862386235
209	Shri.Zulutumba	H.A. Sr.	Dimapur	9436828438
210	Shri. Kevikhrietuo Metha	UDA	Dimapur	9436804931
211	Shri. Tongpangkokba	U.D.A.	Dimapur	9436261059
212	Shri. Ripaliba	UDA	Dimapur	9436013368
213	Smti. Imtinochetla	UDA	Dimapur	9856845093
214	Shri. R. Temjem	UDA	Dimapur	9436261062
215	Smti. Themneiting	U.D.A.	Dimapur	9436261062
216	Smti.Kimnielhing Hangsingh	U.D.A	Dimapur	9436266063
217	Smti.Paunam	U.D.A.	Dimapur	8014151276
218	Shri. Lanu Tsudir	U.D.A.	Dimapur	8794974539
219	Shri. Jeange Yanlem	LDA	Dimapur	8014151276
230	Shri. Robin K. Rochill	LDA (Contract)	Dimapur	9862227406
231	Shri. Selu Tunyi	LDA (Contract)	Dimapur	7308528531
232	Smti. Tiajenla	LDA (Contract)	Dimapur	9436207999
233	Shri. Neivizolie Kense	LDA (Contract)	Dimapur	9856758798
234	Shri. Ikaho Aye	LDA (Contract)	Dimapur	9774691302
235	Shri. Imato Ayemi	LDA (Contract)	Dimapur	9774011750
236	Shri. Benedict Hamtsoe	LDA (Contract)	Dimapur	9862229890
237	Shri. Heshika Yepthomi	LDA (Contract)	Dimapur	8974155935
238	Shri. Atsusangba	LDA (Contract)	Dimapur	9089773588
239	Shri. Tekhengu-u Kezo	LDA (Contract)	Dimapur	8794546360
240	Shri. Buchong Lushing	LDA (Contract)	Dimapur	9612784363
241	Shri. Imtongchujang	LDA (Contract)	Dimapur	
242	Smti.S. Arepla	Typist	Dimapur	9436423143
243	Smti.Tozheli	Typist	Dimapur	9436266812
244	Shri Abemo	Peon	Dimapur	9436261056
245	Ruduovi Virie	Peon	Dimapur	9615623718
246	Shri. Sangbun	Peon	Dimapur	9856231714
247	Shri. Kedosetuo	Peon	Dimapur	9856213256
248	Shri. Razhusilie Visezuo	Peon	Dimapur	9774463280

249	Shri. C. Berithung Murry	Peon	Dimapur	9089990625
250	Shri. H.Winsha Konyak	Peon	Dimapur	9612371073
251	Shri. P. Tinglei Konyak	Peon	Dimapur	9862754815
252	Shri. Imnasungba	Peon	Dimapur	8974655504
253	Smti.Tarenjungla Sempo	Peon	Dimapur	8974795997
254	Shri. Alemla Longchar	Peon	Dimapur	
255	Shri Imlitoshi	Chowkidar	Dimapur	9856901068
256	Shri Moamonger	Mali	Dimapur	9862777455
257	Shri Phyophathung	Sweeper	Dimapur	
258	Shri Wati Lkr	Driver	Dimapur	9856284146
259	Shri Pauzan Zealing	Driver	Dimapur	8575498338
260	Shri Vikhonu Shiju	Driver	Dimapur	7085653402
261	Shri. Akato Zhimo	Driver	Dimapur	8575872530
262	Shri. Tito G. Aye	Driver	Dimapur	8415830020
263	Shri. Nokisangba	Driver	Dimapur	8356960046
264	Shri. Richard Achumi	Driver	Dimapur	8119024734
265	Mrs. N. Areni Patton	Deputy Commissioner of State Taxes	Kohima	7085169839
266	Smti. Orenponi	Superintendent of State Taxes	Kohima	9774574357
267	Smt. L.Yanbeni Humstoe	Superintendent of State Taxes	Kohima	9402809264
268	Shri Poshutho	Superintendent of State Taxes	Kohima	9856780808
269	Shri.Abeni Lotha	Sr.Inspector of State Taxes	Kohima	8794730802
270	Smti. Liisii	Inspector of State Taxes	Kohima	8794280127
271	Smti. Vinika Loho	Inspector of State Taxes	Kohima	9402014350
272	Shri. Vizayie Kar	Inspector of State Taxes	Kohima	961201355
274	Smti. Sentikala Sanglir	Inspector of State Taxes	Kohima	9862193291
275	Shri. Merenkaba	Inspector of State Taxes	Kohima	9612166007
276	Shri. Zuthungbemo Ovung	Inspector of State Taxes	Kohima	9436216543
277	Shri. Zulhipeu Meru	H.A.	Kohima	9436261443
278	Shri W. Henloi Phom	UDA	Kohima	9612836215
279	Shri. Mhaseyi	U.D.A	Kohima	9436210202 9612367978
280	Smti. Wewule Thopi	U.D.A	Kohima	9436403489
281	Smti. Neibanuo	L.D.A	Kohima	9436000868
282	Smti. Alakunu Khieya	LDA (Contract)	Kohima	8974998276
283	Smti. Watisenla	LDA (Contract)	Kohima	9615936778
284	Smti.Lazonuo Kengurise	LDA (Contract)	Kohima	8119022994
285	Shri. Neihemia Nchang	LDA (Contract)	Kohima	9862182660

286	Shri. Neikemhiezo Mere	LDA (Contract)	Kohima	8258093272
287	Shri. Arangbe Meru	LDA (Contract)	Kohima	9402205249
288	Smt. Neilhou-u Metha	Typist	Kohima	8014895155
289	Smt. Medosenuo Richa	Typist	Kohima	9436604843
290	Smti.Kereilhou-u Rupreo	Typist	Kohima	9436601790
291	Shri. Khumbemo	Driver	Kohima	9615908412
292	Shri. Kiyekha	Driver	Kohima	9862743796
293	Shri. Nchanlo Kemp	Driver	Kohima	9856581582
294	Shri. Tepusatuo Kulnu	Driver	Kohima	8014847251
295	Shri. Mapo Konyak	Driver	Kohima	9621015683
296	Shri. Kevizelie Venuh	Peon	Kohima	9856349422
297	Shri. Lhiwepre Lesuh	Peon	Kohima	9774422302
298	Shri .Temi	Peon	Kohima	
299	Shri. Zevilhoulie	Peon	Kohima	8575768670
300	Shri. Tez Bahadur	Peon	Kohima	9089842168
301	Smti. Kevitsono	Peon	Kohima	9856535649
302	Shri. Kekhrieneizo Matha	Chowkidar	Kohima	9856535649
303	Smti. Kevilhouü	Sweeper	Kohima	9615609793

List of Vehicles Under the Department of Taxes:

Sl. No	Name & Disignation of Officers	Vehicle No.	Type of Vehicle	Drivers attached to Officers.
1	Kesonyu Yhome, IAS Commissioner of State Taxes	a) NL-10-8126	a) Scorpio	a) Solomon
		b) NL-10-9873	b) Hyundai/Creta	b) Prem Bahadur Chetri
2	Shri Mhathung Murry, Additional Commissioner of State Taxes -I	a) NL-10-C-0542	a) Scorpio	a) Tsanthungo Murry
				b) Jasper Imsong
3	Shri Wochamo Odyuo, Additional Commissioner of State Taxes-II	NL-10-C-0866	Scorpio	Orenthung Tsopoe
4	Smti Kilangnaro, Joint Commissioner of State Taxes Dimapur- I	NL-10-0522	Bolero	Suresh Thapa
5	Smti Imtilemla, Joint Commissioner of Taxes Dimapur II	NL-10-0523	Bolero	Sashiyongdang
6	Shri C.Lima Imsong, Deputy Commissioner of State Taxes (HQ)	NL-10-C 1120	Duster	Pauzen
7	Shri L. Shechong Konyak, Deputy Commissioner of State Taxes Dimapur (MS)	NL-10-C-0559	Bolero	Nnio Murry
8	Smti Areni Patton, Deputy Commissioner of	NL-10-9323	Scorpio	Nchenlo Kemp

	State Taxes Kohima			
9	Shri Imosong Imsong, Deputy Commissioner of State Taxes Dimapur	NL-10-9640	Bolero	Pranab Phonglo
10	Smti Lirila Sangtam, Deputy Commissioner of State Taxes Mokokchung	NL-10-9641	Bolero	T.Temjen Jamir
11	Smti. Nitoli Sema, Superintendent of State Taxes Dimapur	NL-10-8305	Bolero	Richard Achumi
12	Shri. Vekhozo Dozo, Superintendent of Taxes Dimapur	NL-10-7007	Gypsy King	Vikhonu Shijol
13	Smti Orenponi Yanthan, Superintendent of State Taxes Kohima	NL-10-9149	Xylo	Wati Longkumer
14	Shri. I.Mughato Aye, Superintendent of State Taxes Dimapur	NL-10-7321	Xylo	Roley Yeptho
15	Smti. Tokatoli Sohe, Superintendent of State Taxes Dimapur	NL-10-7701	Bolero	Akato Zhimomi
16	Shri. P. Muchu Khiarniungan, Superintendent of State Taxes Tuesang	NL-10-8306	Bolero	C. Sulim
17	Smti Chievitshu Nyuthe, Superintendent of State Taxes Dimapur	NL-108852	Scorpio	Nokisangba
18	Shri. Aowati Superintendent of State Taxes Kohima	NL-10-9638	Bolero	Kiyakha
19	Km. L.Yanbeni Humtsoe Superintendent of State Taxes Kohima	NL-10-3597	Omni Van	Khumbemo Lotha
20	Shri. Poshutho, Superintendent of State Taxes Kohima	NL-10-6158	Bolero	Tepusato Kulnu
21	Shri. Y.Chintuk Phom, Superintendent of Taxes Phek	NL-10-5316	Gypsy King	Kope Kronu
22	Shri. Jimyang Imlong, Superintendent of State Taxes Zunheboto	NL-10-8304	Bolero	Tito G. Aye
23	Shri. Bendangchuba, Superintendent of Taxes Dimapur (MS).	NL-10-7516	Bolero	
24	Shri. Zulutemsu, Superintendent of State Taxes Dimapur.	NL/10/C-0097	Gypsy	Tsuktimongba
25	Shri. Atener Aier, Superintendent of State Taxes Wokha.	NL/10/6924	Gypsy	
26	Shri.Y.Toshi Yimchunger, Superintendent of State Taxes Mon	NL/10/9624	Gypsy	
27	Smti. Chubanaro Superintendent of State Taxes Mokokchung.	NL-10-5316	Gypsy King	
28	Shri. Imlisanen, Computer Engineer	NL-10-8642	Bolero	
29	Shri. Sukdew Kumar Chetri, Sr. Steno cum P.S to Commr. of Taxes	NL-10-8854	Bolero	
30	OSD Revenue	NL-10-9710	Scorpio	Nath
31	Smti.Bodeno S. Colo, Joint Secretary	NL-10-C-0510	Bolero	

MANUAL-X

The monthly remuneration received by each of its officers and employees, including the system of compensation as provided in its regulations: Given in Annexure-I & II below:

ANNEXURE-I

Sl. No.	Designation	Group	Level /Pay Matrix	Rupees.
1	Commissioner of Taxes	A	Level-17 Rs. 38200	Rs.102000-195500
2	Addl. Commissioner of Taxes	A	Level-17 Rs. 38200	Rs.102000-195500
3	Joint Commissioner of Taxes	A	Level-16 Rs. 29920	Rs.79900-193700
4	Deputy Commissioner of Taxes	A	Level-15 Rs. 25200	Rs.67300-189000
5	Senior Superintendent of Taxes	A	Level-14 Rs. 21510	Rs.57400-181600
6	Registrar	A	Level-14 Rs. 21510	Rs.57400-181600
7	Superintendent of Taxes	A	Level-12 Rs. 16690	Rs.43700-138500
8	Senior Inspector of Taxes	B	Level-11 Rs. 15560	Rs.40800-129200
9	Inspector of Taxes	C	Level-8 Rs. 11170	Rs.28700-91300
10	Stenographer Gr.I	A	Level-14 Rs. 21510	Rs.57400-181600
11	Stenographer Gr.III	C	Level-7 Rs. 10280	Rs.26400-83600
12	Computer Engineer	B	Level-12 Rs. 16690	Rs.43700-138500
13	Office Superintendent(Dte)	A	Level-13 Rs. 21000	Rs.53100-177500
14	Asstt.Office Superintendent (Dte)	B	Level-11 Rs. 15560	Rs.40800-129200
15	Sr. H/A	B	Level-11 Rs. 15560	Rs.40800-129200
16	Head Asstt.*	C	Level-10 Rs. 14430	Rs.37800-119700
17	U.D.A. (Dte)	C	Level-8 Rs. 11170	Rs.28700-91300
18	U.D.A. (Dist)	C	Level-7 Rs. 10280	Rs.26400-83600
19	Sr. Driver	C	Level-6 Rs. 9840	Rs.25300-80500
20	Driver	C	Level-3 Rs. 7000	Rs.18000-56900
21	L.D.A. (Dte)	C	Level-5 Rs. 7960	Rs.20500-65100
22	L.D.A. (Dist)	C	Level-4 Rs. 7580	Rs.19500-62000
23	Typist Grade -II	C	Level-5 Rs. 7960	Rs.20500-65100
24	Typist Gr.III	C	Level-4 Rs. 7580	Rs.19500-62000
25	Duftry	D	Level-2 Rs. 6260	Rs.16100-50900
26	Checker	D	Level-2 Rs. 6260	Rs.16100-50900
27	Sweeper	D	Level-2 Rs. 6260	Rs.16100-50900
28	Chowkidar	D	Level-1 Rs. 6050	Rs.15500-49400
29	Peon	D	Level-1 Rs. 6050	Rs.15500-49400
30	Mali	D	Level-1 Rs. 6050	Rs.15500-49400

Manual-X

Monthly remuneration received by each of its officers and employees, including the system of compensation as provided in its regulation (as on 31st March, 2018) under the Taxation Department.

Sl. No.	Name	Father's Name	Gen-der (M/F)	Educational Qualification	Designation	Status	Date of Birth	Date of First Appointment	Date of Appointment to the Present Post	Place of posting	Date of Retirement	Pay Band	Grade Pay	Gross Salary
1	2	3	4	5	6	7	8	9	10	11	12	13	14	15
1	Kesonyu Yhome IAS		M	M.Sc.	Commissioner of State Taxes	Regular				Directorate				133396
2	Y.Mhathung Murry	M.Y.Lotha	M	MA	Addl. Commissioner of State Taxes (I)	Regular	3/3/1968	2/11/1995	3/16/2010	Directorate	3/3/2028		8700	142502
3	Wochamo Odyuo	Innio Odyuo	M	MA	Addl. Commissioner of State Taxes (II)	Regular	1/21/1964	11/6/1989	9/13/2013	Directorate	1/21/2024	15600-39100	7600	119563
4	Kilangnaro Longchar	Taka Longchar	F	BA	Joint Commissioner of State Taxes (I)	Regular	2/25/1963	6/18/1987	9/13/2013	Directorate	6/18/2022	15600-39100	7600	96624
5	Imtilemla Lkr	Medangmayang	F	BA	Joint Commissioner of State Taxes (II)	Regular	1/19/1964	6/20/1987	7/11/2013	Dimapur	6/20/2022	15600-39100	6600	93799
6	C.Lima Imsong	Lt I Chubawati Ao	M	BA	Dy. Commissioner of State Taxes (HQ)	Regular	8/14/1966	5/11/1993	9/13/2013	Directorate	8/14/2026	15600-39100	6600	83855
7	Areni Patton	Nyimathung	F	BA	Dy. Commissioner of State Taxes	Regular	12/2/1970	1/4/1998	10/29/2014	Kohima	12/2/2030	15600-39100	6600	59769
8	Imsong Imsong	Lt. Akangkokba	M	BA	Dy. Commissioner of State Taxes	Regular	3/1/1973	10/18/1998	11/30/2014	Dimapur	2/28/2033	15600-39100	6600	63447
9	L.Shechong Konyak	M.Loy	M	BA	Dy. Commissioner of State Taxes	Regular	3/13/1966	11/1/1988	6/6/2014	Dimapur (MS)	11/1/2023	15600-39100	6600	86341
10	Lirila Sangtam	Lt.Chiose Sangtam	F	BA	Dy. Commissioner of State Taxes	Regular	12/12/1972	12/20/1999	9/24/2012	Mokokchung	12/12/2032	9300-34800	4600	60932
11	Bendangchuba	I.PetongAo	M	BA	Supdt of State Taxes	Regular	1/22/1977	4/28/2003	9/13/2014	Dimapur (MS)	1/22/2037	9300-34800	4600	50100
12	I.Mughato Aye	Lhovi Aye	M	BSc	Supdt of State Taxes	Regular	10/6/1972	11/8/2002	6/14/2013	Dimapur	10/6/2032	9300-34800	4600	47212
13	Tokatoli Sohe	Nihoto Sohe	F	BA	Supdt of State Taxes	Regular	5/1/1978	6/19/2004	3/19/2013	Dimapur	5/31/2038	9300-34800	4600	43009
14	Nitoli Sema	Nechoshei Sema	F	MA	Supdt of State Taxes	Regular	9/9/1974	7/11/2002	4/1/2010	Dimapur	9/9/2034	9300-34800	4600	48681
15	Zulutemsu	Lt.Bendangwati	M	MA	Supdt of State Taxes	Regular	6/26/1976	3/14/2006	10/29/2014	Dimapur	6/26/2036	9300-34800	4600	49702
16	P.Muchu Khamniungan	Pokho	M	BA	Supdt of State Taxes	Regular	6/30/1975	1/27/2006	10/29/2014	Dimapur	6/30/2035	9300-34800	4600	42282
17	Jimyang Imlong	Tojol Imlong	M	BA	Supdt of State Taxes	Regular	08/12/1972	1/9/2004	9/25/2013	Dimapur	8/31/2039	9300-34800	4600	49901
18	Orenponi Yangthan	Lt. P.A..Yanrthan	F	MA	Supdt of State Taxes	Regular	4/23/1976	7/11/2002	3/16/2010	Kohima	4/30/2036	9300-34800	4600	45385

19	L. Yanbeni Humtsoe	LumchioHumtsoe	F	MSc	Supdt of StateTaxes	Regular	4/1/1977	1/2/2004	10/29/2014	Kohima	4/30/2037	9300-34800	4600	46670
20	Poshutho	Lt.Kezhalehou	M	BSc	Supdt of StateTaxes	Regular	1/3/1978	2/1/2006	9/26/2014	Kohima	1/31/2038	9300-34800	4600	45338
21	Chubanaro	Lt. Watimeren	F	MA	Supdt of StateTaxes	Regular	12/10/1978	1/15/2008	03/01/2017	Mokokchung	12/10/2038	5200-20200	4400	40315
22	Aowati	TekotobaLkr	M	BA	Supdt of StateTaxes	Regular	6/3/1965	2/1/1996	6/2/2014	Mokokchung	3/6/2026	9300-34800	4600	52217
23	Toshi Yimchunger	Yimkiumong	M	BA	Supdt of StateTaxes	Regular	2/28/1979	7/11/2002	6/16/2013	Mon	11/30/2037	9300-34800	4600	45896
24	Y.Chinyuk Phom	F.YongshemPhom	M	MA	Supdt of StateTaxes	Regular	12/1/1979	1/27/2006	10/29/2014	Tuensang	1/27/2041	9300-34800	4600	44565
25	Vekhozo Dozo	SevotsoDozo	M	BA	Supdt of StateTaxes	Regular	10/6/1977	11/7/2002	6/14/2013	Phek	10/6/2037	15600-39000	4600	51545
26	Atener Aier	ImtiwapangAier	M	MSc	Supdt of StateTaxes	Regular	10/10/1979	11/3/2006	11/3/2014	Wokha	10/31/2039	9300-34800	4600	48631
27	Chievitshu Nyuthe	Rhuthozu	F	MA	Supdt of StateTaxes	Regular	08/20/1976	11/05/2002	04/01/2010	Zunheboto	08/31/2036	9300-34800	4600	51644
28	Imlisanen	Walter Longchar	M	B.E in Elect. & Comm.	Computer Engineer	Regular	8/27/1983	6/2/2009		Directorate	8/27/2043	9300-34800	4600	46131
29	Keyichetlube	NsaugingPame	M	MA	Sr.Inspector of Taxes	Regular	4/2/1980	5/2/2009	5/1/2014	Dimapur	4/30/2040	5200-20200	4400	40315
30	M.Chebeni Lotha	Mhathung	F	MA	Inspector of Taxes	Regular	4/4/1983	12/7/2010	12/11/2015	Dimapur	4/30/2043	5200-20200	4400	39193
31	Moasenla	Talitemjen	F	MA	Inspector of Taxes	Regular	6/21/1980	12/7/2010	12/8/2015	Dimapur	6/30/2040	5200-20200	4400	38920
32	Ongshau Phom	P.Elung Phom	M	MSc	Inspector of Taxes	Regular	4/16/1982	11/22/2011		Dimapur	4/30/2042	5200-20200	2800	33666
33	Remasangla	T.Mayang Jamir	F	BE	Inspector of Taxes	Regular	3/21/1982	1/21/2010		Dimapur	1/31/2045	5200-20200	4400	37813
34	Rongsenkala	Kilensowa	F	MA	Inspector of Taxes	Regular	7/8/1977	4/25/2011		Dimapur	7/31/2037	5200-20200	2800	32731
35	Thomas Wilson Yimchunger	T.C.Chuba	M	BA	Inspector of Taxes	Regular	3/23/1984	5/4/2009	5/1/2014	Dimapur	3/31/2044	5200-20200	4400	40315
36	MhabeniLotha	E.NrioEzung	F	MA	Inspector of Taxes	Regular	2/25/1983	7/1/2014		Dimapur	2/30/2044	5200-20200	2800	30828
37	H. Ngamwang	Honying	M	BA	Sr. Inspector of Taxes	Regular	4/25/1973	5/6/1992	6/22/2012	Dimapur	6/30/2027	5200-20200	4400	41054
38	Rechanarolmchen	Toshilmchen	F	MSc	Inspector of Taxes	Regular	4/24/1983	9/6/2012		Dimapur	4/30/2043	5200-20200	2800	32695
39	N. Irangsalung	N. Koping	M	BA	Inspector of Taxes	Regular	4/2/81984	10/21/2016		Dimapur	4/30/2044	5200-20200	2800	27431
40	B. Sangro Aier	L. Bandangwabang Aier	M	BA. (LLB)	Inspector of Taxes	Regular	4/9/1977	8/20/2013		Dimapur	4/9/2037	5200-20200	2800	32695
41	ElikaSwu	Lt. LitoSwu	F	MA	Inspector of Taxes	Regular	10/19/1985	6/27/2014		Dimapur MS	10/19/2045	5200-20200	2800	33770
42	Liyngbeni Kikon	TsenyimoKikon	F	MA	Inspector of Taxes	Regular	1/14/1985	6/27/2014		Dimapur MS	1/14/2045	5200-20200	2800	36282
43	Langphong Wanmai	NyamnyeiKonyak	M	MSc	Inspector of Taxes	Regular	2/24/1982	6/27/2014		Dimapur MS	2/24/2042	5200-20200	2800	36282
44	Merenchuba	Lanusashi	M	BA	Sr. Inspector of Taxes	Regular	7/3/1981	1/15/2008	1/15/2013	Dimapur MS	7/3/2041	5200-20200	4400	45369
45	Yanrenthang Yanthang	M.Yantha	M	MSc	Sr. Inspector of Taxes	Regular	7/3/1983	4/5/2009	5/1/2014	Dimapur MS	7/3/2043	5200-20200	4400	44025
46	Rokovisie Mor		M	MA	Inspector of Taxes	Regular	6/7/1981	10/21/2016		Kohima	6/10/2041	5200-20200	2800	27431

47	LiisiiThurr	R.Atathu	F	MSc	Inspector of Taxes	Regular	4/20/1985	12/13/2007	8/10/2012	Kohima	12/31/2042	5200-20200	2800	35756
48	Abeni Lotha	Chibosao	F	MSc	Sr.Inspector of Taxes	Regular	11/1/1981	2/5/2009		Kohima	11/30/2041	5200-20200	2800	37358
49	Vinika Holo	Kupushe	F	M.Sc	Inspector of Taxes	Regular	8/11/1984	3/23/2013	10/21/2016	Kohima	8/31/2044	5200-20200	2800	27431
50	Vizayie Kar	VilakhozoKar	M	Bsc	Inspector of Taxes	Regular	9/29/1992	10/21/2016		Kohima	10/21/2051	5200-20200	2800	27431
51	Sentikala Sanlir	MeyiSanlir	F	MA	Inspector of Taxes	Regular	10/11/1984	10/21/2016		Kohima	10/31/2044	5200-20200	2800	27431
52	Merenkaba	Lt. Purokaba	M	MA	Inspector of Taxes	Regular	6/7/1981	10/21/2016		Kohima	6/10/2041	5200-20200	2800	27431
53	Zuthungbemo Ovung	A.Y.Ovung	M	BE	Inspector of Taxes	Regular	3/28/1985	10/21/2016		Kohima	3/31/2045	5200-20200	2800	27431
54	Roselinda Longchar	P. Chubawati	F	BA	Inspector of Taxes	Regular	7/2/1986	6/27/2014		Mokokchung	7/2/2046	5200-20200	2800	37299
55	Alemwabang Ozukum	Supongiba	M	BA	Inspector of Taxes	Regular	2/28/1977	11/21/2006		Mokokchung	2/28/2037	5200-20200	2800	39559
56	Thsidilong	Chamose	M	BA	Inspector of Taxes	Regular	07/03/1983	10/21/2016		Tuensang	10/31/2043	5200-20200	2800	27431
57	Boska K Yeputhomi	K. Kughazhe Yeputhomi	M	BE	Inspector of Taxes	Regular	5/7/1986	10/21/2016		Tuensang	10/31/2046	5200-20200	2800	27431
58	I. Imsejungla	C. Inden	F	BSc	Inspector of Taxes	Regular	7/27/1982	6/26/2014		Tuensang	7/31/2042	5200-20200	2800	29101
59	Kekhrieselie Khezhe	ViwelieKhezhe	M	BA	Inspector of Taxes	Contract	11/24/1983	11/6/2013		Tuensang	11/24/2043	5200-20200	2800	27559
60	Kokdiba Sangtam	N.T. MerenSangtam	M	MA	Inspector of Taxes	Regular	2/12/1982	5/9/2012		Mon	2/12/2042	5200-20200	2800	28384
61	Taushie	H.Benchem	M	B A	Inspector of Taxes	Regular	11/18/1992	10/21/2016		Mon	10/31/2051	5200-20200	2800	27431
62	Bendungtemsu	Tanghiu	M	B.Sc	Inspector of Taxes	Regular	10/14/1986	7/1/2014		Mokokchung	10/31/2046	5200-20200	2800	36282
63	Myingthunnbemo Patton	Joseph Patton	M	MA	Inspector of Taxes	Regular	08/30/1990	10/21/2016		Zunheboto	10/31/2051	5200-20200	2800	35300
64	Souvitho Nyusou	Sutsutho	M	Ph.d	Inspector of Taxes	Regular	10/30/1981	10/21/2016		Phek	10/21/2051	5200-20200	2800	34248
65	T. Chambemo Kikon	Thungmomo Kikon	M	MA	Inspector of Taxes	Regular	11/18/1988	10/21/2016		Wokha	10/31/2046	5200-20200	2800	29060
66	Viki Sumi	Ghoshito Sumi	F	BA	Inspector of Taxes	Regular	9/13/1990	7/2/2014		Wokha	4/31/2049	5200-20200	2800	30828
67	Seyiekhrielie Kuotsu	Razuovuolie Kuotsu	M	BA	Inspector of Taxes	Contract	22/05/1985	17-07-2009		Mokokchung	3/9/2045	5200-20200	2800	30828
68	Pekuovotuo Angami	D.P. Angami	M	M.A	Inspector of Taxes	Contract	09/11/1982	17-07-2009		Mokokchung	6/10/2042	5200-20200	2800	30828
69	Yenthongla Yimchunger	Murelim Yimchunger	F	M.Sc.	Inspector of Taxes	Regular	12/10/1990	12/10/2016		Mokokchung	2048	5200-20200	2800	34248
70	Zulutemba	Lt.Tsuktirenba	M	B.Com	Sr.Head Assistant	Regular	2/15/1964	2/2/1989	5/3/2013	Dimapur	2/28/2024	9300-34800	4400	58642
71	NzanbemoLotha	ShenjamoLotha	M	Matriculate	Head Assistant.	Regular	2/25/1963	9/27/1985	1/22/2016	Tuensang	9/30/2020	5200-20200	4200	42334
72	Zulhipeu Mero	Lt.K.Mero	M	Matriculate	Head Assistant.	Regular	5/2/1963	10/1/1985	3/17/2017	Wokha	9/30/2020	5200-20200	2600	37934
73	T.Yapangla	Toshi	F	P U	Head Assistant.	Regular	10/24/1965	01/01/1987	02/28/2017	Zunheboto	12/31/2021	5200-20200	4400	44747
74	D.Apokla	Wapanglemba	F	Matriculate	Head Assistant.	Regular	12/2/1966	7/13/1987	18/04/2018	Mon	7/31/2022	5200-20200	2600	41236
75	Akala Jamir	Kilanok	F	Undermatric	Head Assistant.	Regular	4/11/1972	12/11/1999	18/04/2018	Mokokchung	4/11/2032	5200-20200	2600	48599
76	Ashio L. Murry	Lumben Murry	M	Matriculate	Head Assistant.	Regular	8/14/1963	2/1/1987	18/04/2018	Wokha	2/1/2022	5200-20200	2600	45320
77	T.E Kisume	Lt.Tsakiu	M	PU	Head Assistant.	Regular	4/8/1965	10/6/1987	18/04/2018	Phek	10/6/2022	5200-20200	2600	31681

78	VingulieMepfhuo	Ngulho	M	MA	UDA (Directorate)	Regular	3/14/1979	1/14/2009	8/1/2014	Directorate		5200-20200	2800	34248
79	Mhabemo Ovung	N.Ekyimsao Ovoung	M	BA	UDA (Directorate)	Regular	9/20/1971	1/8/2000		Directorate	9/20/2031	5200-20200	2000	40689
80	Flora T.Patton	Lt.James M. Patton	F	BA	UDA (Directorate)	Regular	3/11/1984	5/24/2011		Directorate	3/11/2044	5200-20200	2000	34248
81	Imtinochetla	Kipentemjen	F	PU	UDA (District)	Regular	1/10/1974	4/21/1994	9/5/2014	Dimapur	4/30/2029	5200-20200	2600	36107
82	Themneiting	Khunkholal	F	PU	UDA (District)	Regular	8/22/1981	11/29/2004	1/13/2016	Dimapur	11/30/2039	5200-20200	2600	28745
83	Kiminielhing	Ngulkhosei Hansing	F	BA	UDA (District)	Regular	11/11/1975	1/24/2005	11/2/2016	Dimapur	11/30/2035	5200-20200	2600	29931
84	LanuTsudir	ImtiTzudir	M	P.U. Com	UDA (District)	Regular	10/14/1983	1/25/2004	7/8/2016	Dimapur	30/1/2040	5200-20200	2600	29931
85	RipalibaAo	Tekayaba	M	Matriculate	UDA (District)	Regular	5/16/1962	9/8/1992	10/7/2014	Dimapur	2/28/2022	5200-20200	2600	37377
86	R.Temjen Ozukumer	Rendeshiba	M	Matriculate	UDA (District)	Regular	12/22/1964	9/8/1992	8/2/2014	Dimapur	12/31/2024	5200-20200	2600	35559
87	Kevikhrietuo Metha	LhouslieMetha	M	PU	UDA (District)	Regular	12/17/1980	5/9/2005	26/04/2017	Dimapur	5/9/2040	5200-20200	1900	23529
88	Paunam Meru	Hekimding	F	PUCom	UDA (District)	Regular	3/16/1977	9/2/2005	28/11/2017	Dimapur	3/31//2037	5200-20200	1900	25592
89	Ademo T Murry	Tsumongo Murry	M	MA	UDA (District)	Regular	12/22/1981	3/29/2011	2018	Dimapur	12/51/2041	5200-20200	1900	25782
90	Bimomo Ovung	NirbemoOvung	M	PU	UDA (District)	Regular	6/4/1971	9/1/1900	7/8/2014	Tuensang	9/30/1935	5200-20200	2600	31376
91	W.Henloi Phom	Wongnyie	M	Undermatric	UDA (District)	Regular	10/6/1969	11/6/1982	2/8/2014	Kohima	11/30/2024	5200-20200	2600	37547
92	Mhaseyi Lohe	Lt.TutseyiLohe	M	BA	UDA (District)	Regular	7/12/1979	10/18/2004	1/21/2016	Kohima	8/31/2039	5200-20200	2600	28254
93	WeweluThopi	Lt.Wezulhilo	F	BA	UDA (District)	Regular	7/27/1981	2/6/2008		Kohima	7/31/2041	5200-20200	1900	24431
94	Chumbeni Murry	Jibomo	F	MA	UDA (District)	Regular	1/8/1975	4/2/2008		Dimapur MS	1/8/2035	5200-20200	1900	32440
95	Nchumbemo Ovung	Tsemomo	M	Matriculate	UDA (District)	Regular	5/2/1967	1/2/1988	2/11/2014	Dimapur MS	1/2/2023	5200-20200	2600	40802
96	Satminthang Guite	LalkhosheGuite	M	BA	UDA (District)	Regular	10/2/1983	6/9/2005	26/04/2017	Mon	6/9/2040	5200-20200	1900	23529
97	Gloria Yanthang	Lt.J.T.Yanthan	F	BA	UDA (District)	Regular	4/11/1972	12/11/1999	2/11/2014	Mokokchung	4/11/2032	5200-20200	2600	48599
98	Imtisenla Jamir	Lt.Toshi Jamir	F	BA	UDA (District)	Regular	6/27/1972	2/19/2002	2/11/2015	Mokokchung	6/30/2032	5200-20200	2600	29342
99	AnungbaAo	Lt. AsangbaAo	M	Matriculate	UDA (District)	Regular	1/1/1972	2/11/2015	30/9/2029	Phek	10/1/2029	5200-20200	2600	45548
100	Pfucukha-uWetsah	Lt.MeseloWetsah	F	BA	UDA (District)	Regular	9/27/1978	2/9/2005	28/11/2017	Wokha	9/30/2038	5200-20200	1900	25782
101	S. Rangsingba Sangtam	Sedopng	M	BA	UDA (District)	Regular	6/27/1982	3/29/2011	2018	Tuensang	6/30/2042	5200-20200	1900	22374
102	Keneisetuo Ziekhru	Lt.Neothon	M	PU	UDA (District)	Regular	08/10/1982	01/25/2005	07/22/2016	Zunheboto	12/31/2040	5200-20200	2600	26588
103	Eunich	HotosheYeptho	F	M.C.A	LDA (Directorate)	Contract	11/13/1981	11/14/2014		Directorate	11/13/2041	5200-20200	2000	21441
104	Veseilhou Chupuo	Neilatuo	M	MA	LDA (Directorate)	Contract	4/24/1989	3/1/2016		Dimapur	4/30/2049	5200-20200	1900	20220
105	Shime Jamir	Y.Puti Jamir	M	BA	LDA (Directorate)	Contract	6/20/1981	1/1/1900		Directorate	1/1/1935	5200-20200	2000	22088
106	Subongmeren	Samanungsang	M	MA	LDA (Directorate)	Contract	1/27/1985	11/14/2014		Directorate	1/27/2045	5200-20200	2000	21441
107	ZuchanoKikon	R.John	F	MA	LDA (Directorate)	Contract	1/16/1984	1/1/1900		Directorate	1/1/1935	5200-20200	2000	22088
108	Wingambo	AritnboRentta	M	BA	LDA (Directorate)	Contract	2/14/1992	2/4/2015		Directorate	2/4/2050	5200-20200	2000	21441
109	Nikmenmenla		F	BA	LDA (Directorate)	Contract	12/07/1992	2/4/2015		Directorate	2/4/2050	5200-20200	2000	21441
110	Zasivillie Chase	Lt.Neikosalhou	M	BA	Analyst	Regular	4/20/1977	9/7/2005		Directorate	4/20/2037	5200-20200	2000	32510

111	M.JeangeYanlem	W.Manpong	M	BA	LDA (District.)	Regular	9/22/1976	6/1/2011		Dimapur	9/20/2036	5200-20200	1900	23706
112	Atsusangba	Imtitemoa	M	Tech. Grad	LDA (District.)	Contract	7/8/1988	5/1/2015		Dimapur	7/31/2048	5200-20200	1900	19274
113	Neivizolie Kense	Neisielie	M	B. A	LDA (District.)	Contract	11/10/1987	6/4/2014		Dimapur	7/31/2048	5200-20200	1900	19274
114	HeshekaYepthomi	Lt.Yekhuhe	M	MA	LDA (District.)	Contract	7/15/1987	11/14/2014		Dimapur	7/31/2047	5200-20200	1900	19274
115	Ikaho Aye	Shikato Aye	M	BA	LDA (District.)	Contract	3/25/1987	5/29/2014		Dimapur	3/31/2047	5200-20200	1900	19274
116	ImatoAyemi	PuhitoAyemi	M	MA	LDA (District.)	Contract	2/23/1987	5/29/2014		Dimapur	2/28/2047	5200-20200	1900	19274
117	K.RobinRochill	KhetoiRochill	M	BA	LDA (District.)	Contract	9/18/1986	11/2/2014		Dimapur	9/30/2046	5200-20200	1900	19274
118	BeneditT.Humtsoe	Thungchamo	M	BA	LDA (District.)	Contract	3/18/1988	6/1//2014		Dimapur	3/31/2048	5200-20200	1900	19274
119	Tekhengu-u Koza	Neikhretso	M	BA	LDA (District.)	Contract	1/8/1985	5/1/2015		Dimapur	1/31/2045	5200-20200	1900	19274
120	S.BuchongLushing	Shingnyu	M	MA	LDA (District.)	Contract	8/12/1984	5/2/2015		Dimapur	8/31/2044	5200-20200	1900	19274
121	Tiajenla	K. Chuba	F	MA	LDA (District.)	Contract	8/2/1982	11/14/2014		Dimapur	8/31/2042	5200-20200	1900	19274
122	SeluTunyi	NetsozuTunyi	F	BA	LDA (District.)	Contract	4/3/1989	11/24/2016		Dimapur	4/30/2049	5200-20200	1900	19274
123	Wabangmenla	Lt. Korapang	F	Udermatric	LDA (District.)	Regular	3/3/1965	3/7/1987		Dimapur MS	3/7/2022	5200-20200	1900	43062
124	KezhangulieKire	PulhouKire	M	BA	LDA (Dist.)	Contract	7/18/1982	5/17/2014		Dimapur MS	7/18/2042	5200-20200	1900	20445
125	InotoliSema	Lt. Assumi	F	BA	LDA (Dist.)	Contract	5/14/1985	5/17/2014		Dimapur MS	5/14/2045	5200-20200	1900	21067
126	IrangteingHemang	Pausuiheing	M	B.C.A	LDA (Dist.)	Contract	11/10/1984	4/30/2015		Dimapur MS	11/10/2044	5200-20200	1900	20445
127	VikatoYepthomi	Khenito	M	MA	LDA (Dist.)	Contract	12/23/1988	4/28/2015		Dimapur MS	12/23/2048	5200-20200	1900	20445
128	NisheliAwomi	Lt.ShiyitoAwomi	F	BA	LDA (Dist.)	Contract	28/08/1987	5/17/2014		Dimapur MS	5/14/2045	5200-20200	1900	21067
129	Albert Mero	Zumolhi	M	BA	LDA (Dist.)	Contract	02/05/1988			Dimapur MS		5200-20200	1900	19274
130	SeveKoza		M		LDA (Dist.)	Contract				Dimapur MS		5200-20200	1900	19274
131	SakumongbaLongchar		M		LDA (Dist.)	Contract				Dimapur MS		5200-20200	1900	19274
132	Watimeren		M		LDA (Dist.)	Contract				Dimapur MS		5200-20200	1900	19274
133	Arungbe Meru	Ngulie Meru	M	BA	LDA (Dist.)	Contract	1/8/1986	11/13/2014		Kohima	1/8/2046	5200-20200	1900	18835
134	AlakunuKhieya	Punose	F	M.Com	LDA (Dist.)	Contract	5/8/1988	5/19/2014		Kohima	8/5/2048	5200-20200	1900	18744
135	LazonuoKengursie	Reiliezhu	F	MA	LDA (Dist.)	Contract	12/7/1987	7/7/2014		Kohima	7/2/2047	5200-20200	1900	18744
136	Neikemhiezo Mere	Viyalie Mere	M	BA	LDA (Dist.)	Contract	6/22/1993	11/13/2014		Kohima	11/13/2049	5200-20200	1900	18744
137	Nehemiah Nchang	PuaudaboNchang	M	M A	LDA (Dist.)	Contract	7/24/1984	7/7/2014		Kohima	7/24/2044	5200-20200	1900	18744
138	Watisenla	Inonenba	F	BA	LDA (Dist.)	Contract	1/19/1982	5/19/2014		Kohima	1/19/2042	5200-20200	1900	18744
139	CheteuLosou	SenokhaLosuo	M	M A	LDA (Dist.)	Contract	6/11/1990	11/19/2016		Kohima		5200-20200	1900	18744
140	Neibanuo	Lt.K.Angami	F	Udermatric	LDA (Dist.)	Regular	10/5/1965	7/17/1987		Kohima	7/31/2022	5200-20200	1900	33506
141	Bendangkokba		F	BA	LDA (Dist.)	Contract	1/19/1982	6/6/2014		Mokokchung	1/19/2042	5200-20200	1900	20445
142	ImkumPonger	Nokchameren	M	BA	LDA (Dist.)	Contract	3/28/1983	12/16/4014		Mokokchung	3/28/2043	5200-20200	1900	21067
143	Lungyisappe	Hialing	M	BA	LDA (Dist.)	Contract	06/06/1990	18/06/2015		Mokokchung	3/10/2050	5200-20200	1900	21067
144	Ahom T Konyak		M	BA	LDA (Dist.)	Contract	3/10/1983	11/13/2014		Mon	3/10/2043	5200-20200	1900	18285

145	PhampeKonyak		F	BA	LDA (Dist.)	Contract				Mon		5200-20200	1900	18285
146	Merilo	Lt. Nchibemo	F	PU	LDA (Dist.)	Contract	2/13/1984	6/20/2015		Phek	6/30/2056	5200-20200	1900	18743
147	Neisakhono	KodolhouRitse	F	B.A	LDA (Dist.)	Regular	8/2/1975	5/12/2011		Phek	5/31/2046	5200-20200	1900	27920
148	Pesing Khamniungan	Mongtsoa	M	BA	LDA (Dist.)	Contract	8/3/1984	6/13/2014		Tuensang	6/30/2049	5200-20200	1900	20486
149	LikumseSangtam	Lt. TsalitoSangtam	M	BA	LDA (Dist.)	Regular	7/26/1990	11/2/2013		Tuensang	11/30/2048	5200-20200	1900	20486
150	Meribeni Patton	N.Danil Patton	F	MA	LDA (Dist.)	Contract	3/31/1984	4/30/2015		Wokha	3/31/2044	5200-20200	1900	19274
151	SaviKoza	KhapeKoza	M	MA	LDA (Dist.)	Contract	5/7/1983	11/28/2016		Wokha	11/31/2045	5200-20200	1900	19274
152	Toil Yeptho	Keyito	F	M A	LDA (Dist.)	Contract	12/13/1992	6/2/2016		Zunheboto		5200-20200	1900	19274
153	Bendanglemla	WatiSangtam	F	CI-12	LDA (Dist.)	Contract	10/28/1982	18/16/2016		Zunheboto		5200-20200	1900	19274
154	Mesue	Dichelo	F	BA	LDA	Fixed	1/1/1900	11/5/2014		Dimapur	1/1/1960	3400	-	3400
155	Sukdew Kumar Chetri	Lt.Dil Bahadur Chrtri	M		Sr. Stenographer Gr.IISr	Regular	8/8/1965	8/8/1986		Directorate	8/8/2021	15600-39100	5700	77866
156	Imtilangla Longkumer	Lt. Rendinungsang Lkr	F		Stenographer Gr.III	Regular	4/25/1989	4/2/2015		Directorate	4/25/2049	5200-20200	2600	35378
157	Tsuknungrenla	Chujhunglmchen	F		Stenographer Gr.III	Regular				Directorate		5200-20200	2600	32440
158	Rongpangmeren	Rongsensowa	M	Matriculate	Stenographer Gr.III	Regular	10/24/1972	7/30/1993		Directorate	7/30/2028	5200-20200	2600	52250
159	Bamzeu Ligiese	K.Zeliang	F	Matriculate	Typist Gr.I	Regular	12/25/1969	10/21/1995		Directorate	12/25/2029	5200-20200	2400	42836
160	Vitoungu-u Chase	Lt.Neikosalhou	F	Matriculate	Typist Gr.II	Regular	2/1/1976	1/19/2001		Directorate	1/19/2036	5200-20200	2000	35765
161	Bendangkokla	Nungsangkaba	F	Undermatrc	Typist Gr.III	Regular	6/3/1970	5/14/1990		Directorate	5/14/2025	5200-20200	1900	38915
162	Gwachu Kajan	Kema	M	Undermatric	Typist Gr.III	Regular	02/20/1967	08/10/1988		Zunheboto	8/31/2023	5200-20200	1900	35488
163	Tozheli	Pekiye	F	Undermatric	Typist Gr.III	Regular	2/6/1969	8/30/1988		Dimapur	8/31/2023	5200-20200	2000	36854
164	S.Arepla	Pangjung	F	Undermatric	Typist Gr.III	Regular	5/15/1966	10/11/2011		Dimapur	10/31/2023	5200-20200	1900	35719
165	Linyu Konyak	Taipong	F	Undermatric	Typist Gr.III	Regular	3/4/1976	11/1/2001		Mon	11/30/2036	5200-20200	1900	28593
166	Kereilhou-u Rupreo	Lt. Duorhielie	F	Undermatric	Typist Gr.III	Regular	4/1/1969	12/11/1995	5/1/2014	Kohima	4/30/2029	5200-20200	1900	31449
167	MedosenuoRicha	Lt.Koshu	F	Undermatric	Typist Gr.III	Regular	1/30/1971	7/18/1994	5/1/2014	Kohima	7/31/2029	5200-20200	1900	30560
168	NeilhoiiMetha	Lt.Yachuvi	F	Undermatric	Typist Gr.III	Regular	11/28/1967	8/29/1988		Kohima	8/31/2023	5200-20200	1900	32138
169	Orenthung W Tungoe	WonimoTungoe	M	Undermatric	Typist Gr.III	Regular	6/18/1976	8/1/2000		Wokha	7/31/2035	5200-20200	1900	31899
170	T. Chimkila	Tsuntruba	F	Undermatric	Typist Gr.III	Regular	6/25/1964	7/22/1988		Tuensang	7/31/2023	5200-20200	2000	34788
171	Zutsolo-u	Chitsolo	F	Matriculate	Typist Gr.III	Regular	03/22/1960	09/18/1988		Phek	03/22/2020	5200-20200	1900	42836
172	Solomon	Kholi	M	CI-VI	Driver Gr.II	Regular	3/15/1972	11/9/1997		Directorate	3/15/2032	5200-20200	2400	37655
173	PranabPhonglo	Lt.Devalsingh Phonlo	M	CI-IX	Driver Gr.II	Regular	1/5/1966	1/7/1987		Directorate	1/7/2022	5200-20200	2400	49729
174	Prem Bahadur	Pakhele Bahadur	M	CI-VI	Driver Gr.II	Regular	4/8/1975	9/19/1997		Directorate	9/19/2032	5200-20200	2400	32615
175	Sashiyongdang	Imyapangba	M	CI-VI	Driver Gr.II	Regular	12/28/1964	1/2/1987		Directorate	1/2/2022	5200-20200	2400	46265
176	Roly	Niyitoyeptho	M	CI-VIII	Driver Gr.II	Regular				Directorate	1/1/1935	5200-20200	2400	16728

177	Jasper		M	CI-VI	Driver Gr.II	Regular				Directorate		5200-20200	2400	40463
178	Nnio Murry		M	CI-VI	Driver Gr.II	Regular				Directorate		5200-20200	2400	40463
179	OrenthongTsopoe	WobamaoTsopoe	M	CI-IV	Driver Gr.II	Regular	12/24/1977	8/2/2008		Dimapur MS	12/24/2037	5200-20200	1800	30293
180	Tsanthungo Murry	Sabemo Murry	M	CI-VII	Driver Gr.I	Regular	2/1/1962	8/30/1988		Dimapur MS	2/1/2022	5200-20200	2400	48599
181	Suresh Thapa	Lt.K.B.Thapa	M	CI-VIII	Driver Gr.II	Regular	1/3/1956	12/8/1997		Dimapur MS	1/3/2016	5200-20200	2400	40463
182	Pauzan Zealing	Lt.Degeng	M	CI-VII	Driver Gr.II	Regular	10/10/1977	10/18/2004		Dimapur	10/31/2037	5200-20200	2400	26595
183	Vikhonu Shijol	YaphuyeShijol	M	CI-VIII	Driver Gr.II	Regular	10/24/1974	10/18/2004		Dimapur	10/31/2037	5200-20200	2400	26595
184	Wati LKR	Ayim	M	CI-IX	Driver Gr.II	Regular	8/17/1973	9/19/1997	9/20/2007	Dimapur	9/30/2032	5200-20200	2400	33492
185	Tito G. Aye	Ghonizu	M	PU	Driver Gr.III	Regular	7/30/1988	10/22/2014		Dimapur	7/30/2040	5200-20200	1800	19274
186	Nokisangba	Takusashi	M	CI-IX	Driver Gr.III	Regular	4/25/1980	12/2//2014		Dimapur	4/30/2040	5200-20200	1800	19274
187	Richard Achumi	HevitoAchuni	M	PU	Driver Gr.III	Regular	9/4/1984	11/10/2014		Dimapur	9/30/2044	5200-20200	1800	19274
188	AkatoZhimomi	VuhojeZhimomi	M	Matriculate	Driver Gr.III	Regular	12/18/1984	10/14/2014		Dimapur	31/12/2044	5200-20200	1800	19274
189	KiyekhaSema	Lt. AlluSema	M	CI-VIII	Driver Gr.II	Regular	6/1/1969	27/7/1992	8/14/2002	Kohima	7/31/2027	5200-20200	2400	33669
190	KhumbemoLotha	Womomo	M	CI-VII	Driver Gr.II	Regular	3/3/1967	2/23/1987	2/8/1997	Kohima	2/28/2022	5200-20200	2400	37590
191	Nchenlo Kemp	Lt.Gwenlo	M	BA	Driver Gr.II	Regular	3/30/1980	2/4/2008	2/4/2008	Kohima	3/31/2040	5200-20200	2400	22374
192	TepusatuoKulnu	Neihovi	M	CI-VIII	Driver Gr-III	Regular	2/9/1981	10/13/2014		Kohima		5200-20200	1800	17340
193	Mapo Konyak	Pongkem	M	CI-VIII	Driver Gr-III	Regular	10/2/1983	11/16/2016		Kohima		5200-20200	1800	17340
194	T.Temjen Jamir	I.Toka Jamir	M	CI-VIII	Driver Gr-III	Regular	6/30/1981	10/10/2014		Mokokchung	6/30/2041	5200-20200	1800	23739
195	Tsuktimongba	Temjemkaba	M	CI-VIII	Driver Gr-III	Regular	6/10/1988	4/29/2015		Mokokchung	6/10/2048	5200-20200	1800	23061
196	C. Sulim Khiamniungan	Chingkong	M	CI-V	Driver Gr.II	Regular	7/5/1982	9/12/2005		Tuensang	12/31/2040	5200-20200	2400	23172
197	KopeKronu	MesezuloKronu	M	CI-VIII	Driver Gr.II	Regular	05/07/1980	01/22/2001		Phek	01/31/2036	5200-20200	1800	33005
198	T .Bahadur		M	CI-VIII	Driver (Fix Pay)	Fix Pay	05/07/1978	01/22/2007		Kohima	01/31/2036	-----	-----	3400
199	Z.Vikato	Zuhoi	M	Matriculate	Checker	Regular	7/14/1967	1/1/1900		Dimapur MS	1/1/1935	4400-17200	1400	34361
200	Arenjenba	Senyangerba	M	BA	Checker	Regular	5/2/1977	9/13/2005		Dimapur MS	5/2/2037	4400-17200	1400	34361
201	HutoviChishi	Nihokhu	M	CI-IX	Checker	Regular	1/10/1965	5/5/1994		Dimapur MS	1/10/2025	4400-17200	1400	34361
202	HetoviAchumi	HesheviAchumi	M	Matriculate	Checker	Regular	3/5/1971	4/21/1994		Dimapur MS	4/21/2029	4400-17200	1400	34361
203	LanglemKonyak	ShahbaKonyak	M	CI-IX	Checker	Regular	6/2/1972	6/28/1994		Dimapur MS	6/28/2029	4400-17200	1400	34361
204	Merentemjen	Kimayangba	M	Matriculate	Checker	Regular	12/22/1971	1/7/1994		Dimapur MS	1/7/2029	4400-17200	1400	34361
205	Moanungba Walling	Lt.Tekataba	M	CI-IX	Checker	Regular	10/1/1968	4/21/1994		Dimapur MS	10/1/2028	4400-17200	1400	34361
206	Rangtielu	Nampui	M	CI-IX	Checker	Regular	4/4/1976	4/24/1994		Dimapur MS	4/24/2029	4400-17200	1400	34361
207	ShempaKonyak	Lt.Thoakwang	M	CI-IX	Checker	Regular	9/27/1969	5/27/1994		Dimapur MS	5/27/2029	4400-17200	1400	34361
208	T.NikhetoSema	Tokiye	M	Matriculate	Checker	Regular	4/4/1971	5/25/1994		Dimapur MS	5/25/2029	4400-17200	1400	34361
209	K.Tochi	Keoren	M	Matriculate	Checker	Regular	5/3/1975	4/30/1994		Dimapur MS	4/30/2029	4400-17200	1400	34361
210	Limatongzuk	R.ImchaAo	M	Matriculate	Checker	Regular	11/26/1968	9/5/1996		Dimapur MS	11/26/2028	4400-17200	1400	34361

211	I.RangdyoOdyuo	InnioOdyuo	M	Matriculate	Checker	Regular	12/25/1979	3/18/1998		Dimapur MS	3/18/2033	4400-17200	1400	34361
212	N.Hotoli	Lt.Nihoto Sumi	F	Matriculate	Checker	Regular	9/29/1976	9/7/2001		Dimapur MS	9/7/2036	4400-17200	1400	29728
213	Imtiyanger	Imposangba	M	PU	Checker	Regular	6/5/1983	6/9/2005		Dimapur MS	6/9/2040	4400-17200	1400	29728
214	Jankhokam	Lt.ChugjakhupHansing	M	CI-IX	Checker	Regular	4/13/1987	8/9/2005		Dimapur MS	8/9/2040	4400-17200	1400	29728
215	AmanKonyak	BangboKonyak	M	PU	Checker	Regular	6/24/1986	9/9/2005		Dimapur MS	9/9/2040	4400-17200	1400	29728
216	Masilhousier	Lt.Korulhou	M	CI-IX	Checker	Regular	10/30/1983	5/6/2005		Dimapur MS	5/6/2040	4400-17200	1400	29728
217	M.Sentiyanger	Mangmesoba	M	Matriculate	Checker	Regular	7/7/1979	2/9/2005		Dimapur MS	7/7/2039	4400-17200	1400	29728
218	MerenPongener	T.Chubatemjen Jamir	M		Checker	Regular	2/26/1984	9/9/2005		Dimapur MS	9/9/2040	4400-17200	1400	29728
219	Vilato Thira	Huzhoyo Thira	M	CI-IX	Checker	Regular	10/1/1978	3/9/2005		Dimapur MS	10/1/2038	4400-17200	1400	29728
220	NeivizokhoKense	KelhouchaKense	M	PU	Checker	Regular	3/5/1985	5/2/2008		Dimapur MS	5/2/2043	4400-17200	1400	26686
221	Z.HotoluYepthomi	Zhukishe	F		Checker	Contract	2/26/1984	3/3/2015		District	2/26/2044	5200-20200	1900	20349
222	Alemwati	Tiameren	M	CI-VIII	Duftry	Regular	1/10/1965	11/7/1987		Directorate	11/7/2022	5200-20200	1400	33330
223	Sungtinaro				Peon					Directorate		4400-17200	1300	18315
224	Tongpanglepden	Tzuenlepden	M	CI-IX	Peon	Regular	1/4/1968	8/20/1992		Directorate	8/20/2027	4400-17200	1300	34361
225	Kedutso Their	Tshulo	M	CI-VII	Peon	Regular	2/2/1985	10/18/2004		Directorate	10/18/2039	4400-17200	1300	26225
226	Asakho	Khriechozo	M	Matriculate	Peon	Regular	2/4/1979	10/10/2004			2/4/2039	4400-17200	1300	27077
227	Lily Murry	Opemo	F	PU	Peon	Regular	2/4/1979	1/18/2004		Directorate	1/18/2039	4400-17200	1300	25886
228	LenkhamongGanti	Sukholem	M	CI-VII	Peon	Regular	7/14/1975	3/9/2005		Directorate	7/14/2035	4400-17200	1300	32666
229	TsitoRhakho	Lt.Ketsulhoukho	M	PU	Peon	Regular	9/1/1989	2/5/2008		Directorate	2/5/2043	4400-17200	1300	25208
230	Zubeni	Lenthe	F	CI-VIII	Peon	Regular	3/11/1980	5/2/2008		Directorate	3/11/2040	4400-17200	1300	25208
231	Thilixu Aye	Lt. Xukishe Aye	M	CL-VII	Peon	Regular	5/11/1982	10/12/2014		Directorate	5/11/2042	4400-17200	1300	20575
232	C YampoKonyak		M	CL-VII	Personal Peon	Fixed	3/15/1982	10/12/2014		Directorate		3400	-	3400
233	Lichumbeni		F	PU	Computer Operator	Fixed		10/12/2014		Directorate		3400	-	3400
234	Imchizungla		F	CI-X	Peon	Fixed		10/12/2014		Directorate		3400	-	3400
235	Wochumo	BenrioLotha	M	CI-IX	Peon	Regular	10/28/1968	8/9/1997		Dimapur MS	10/28/2028	4400-17200	1300	30858
236	Akheto	Azhive	M	CI-X	Peon	Regular	2/19/1971	8/9/1997		Dimapur MS	2/19/2031	4400-17200	1300	31258
237	AtoiSema	Zuheche	M	CI-IX	Peon	Regular	6/26/1969	9/25/1997		Dimapur MS	6/26/2029	4400-17200	1300	31658
238	Artong	Imnamayang	M	CI-VI	Peon	Regular	5/29/1987	4/2/2008		Dimapur MS	4/2/2043	4400-17200	1300	25208
239	AnatoSema	G.Kehovi	M	CI-IX	Peon	Regular	1/27/1985	10/18/2004		Dimapur MS	10/18/2039	4400-17200	1400	25208
240	Requedew	Ngimlung	M	CI-VI	Peon	Regular	9/15/1959	3/11/1982		Dimapur	3/31/2017	4400-17200	1900	31921
241	P.TinglieKonyak	Pumen	M	CI-X	Peon	Regular	2/23/1993	11/26/2014		Dimapur	11/30/2049	4400-17200	1300	16909
242	H.WangshaKonyak	Lt.Honkhen	M	Matriculate	Peon	Regular	4/15/1988	10/15/2014		Dimapur	4/30/2048	4400-17200	1300	16909
243	Imnasangba	Imtijungshi	M	CI-	Peon	Regular	1/26/1992	11/5//2014		Dimapur	11/30/2042	4400-17200	1300	16909

244	Bennithung Murry	A.Chungirao	M	CI-X	Peon	Regular	10/7/1990	10/13/2014		Dimapur	10/31/2049	4400-17200	1300	16909
245	KedosetuoVimera	Lt.Houzolie	M	CI-VI	Peon	Regular	1/15/1974	2/5/2008		Dimapur	10/31/2034	4400-17200	1300	21193
246	Moamonger	Yapanglemba	M	BA	Peon	Regular	9/4/1981	11/112004		Dimapur	11/30/2039	4400-17200	1300	22214
247	Sangbun	Lt.D.K.Chilak	M	CI-VI	Peon	Regular	2/25/1965	9/10/1992		Dimapur	2/28/2025	4400-17200	1400	26845
248	RuduoviVerie	PutseilieVarie	M	CI-V	Peon	Regular	3/1/1966	8/30/1988		Dimapur	1/31/2023	4400-17200	1800	29709
249	RazhusielieVesezuo	Thenuokhrielie	M	BA	Peon	Regular	9/10/1985	10/3/2014		Dimapur	10/31/2049	4400-17200	1300	16909
250	AbemoLotha	Akomo	M	CI-V	Peon	Regular	10/7/1964	2/15/1988		Dimapur	2/28/2023	4400-17200	1800	28548
251	I.AtubaTzudir	Lt.Tsukjem	M	CI-VIII	Peon	Regular	10/1/1963	10/22/1982		Dimapur	10/22/2017	4400-17200	1300	
252	Tarenjungla	Ponatemjen	F	Matriculate	Peon	Regular	11/10/1982	11/21/2016		Dimapur	11/30/2042	4400-17200	1300	15938
253	AlemlaLongchar	Lt.Tongpang	F	Matriculate	Peon	Regular	10/13/1981	04/17/2017		Dimapur	10/31/2041	4400-17200	1300	15938
254	Chubayangla	Lt.Imtimendang	F	CI-	Peon	Fixed	3/15/1956	12/6/2002		Dimapur	3/15/2016	3400/-	3400	3400/-
255	VinohoTemi	Lt.Vadi	M	CI-VIII	Peon	Regular	10/15/1976	11/25/2005		Kohima	1031/2036	4400-17200	1300	19824
256	LhiwepreLasuh	Mesethinyi	M	CI-VII	Peon	Regular	3/2/1977	9/2/2005		Kohima	3/2/2037	4400-17200	1300	20444
257	KevizelieVenuh	Lt.Khinyi	M	CI-VI	Peon	Regular	3/6/1972	10/8/1992		Kohima	10/31/2027	4400-17200	1800	25415
258	Zevilhoulie	Lt.Viu	M	BA	Peon	Regular	5/6/1984	6/3/2011		Kohima	5/31/2044	4400-17200	1300	16733
259	Tej Bahadur	Bishnu Bahadur	M	CI-VII	Peon	Regular	1/17/1996	9/26/2014		Kohima	9/30/2049	4400-17200	1300	15041
260	KevitsonuoTepudil	Lt. Neisa	F	CI-VIII	Peon	Regular	4/4/1979	11/20/2014		Kohima	4/30/2039	4400-17200	1300	15041
261	Longthah	Moknyu	M	CI-VIII	Peon	Regular	10/5/1964	10/15/1984		Mon	10/30/2019	4400-17200	1900	31096
262	Heyam	Anyik	M	CI-VIII	Peon	Regular	3/1/1961	10/1/1982		Mon	10/30/2017	4400-17200	1900	32308
263	Mailo	Yakha	M	CI-VIII	Peon	Regular	2/20/1963	3/1/1983		Mon	3/31/2018	4400-17200	1300	32308
264	Seyam		M	CI-VIII	Peon	Regular	7/25/1960	1/3/1983		Mon	1/3/2018	4400-17200	1300	32308
265	ManbinKonyak	Panglem	M	CI-VIII	Peon	Regular	7/25/1960	10/1/1982		Mon	10/30/2017	4400-17200	1900	32308
266	P.Chingyah Konyak	Pongoi Konyak	M	CI-VIII	Peon	Regular	6/8/1995	6/9/2018		Mon	10/30/2017	4400-17200	1900	32308
267	Chubangangtet	Nukshikaba	M	Matriculate	Peon	Regular	10/23/1975	09/08/1997		Mokokchung	2032	4400-17200	1900	31258
268	BENJUNGKUMBA	Pangjungnuke	M	CI-III	Peon	Regular	2/7/1980	10/13/2014		Mokokchung	2/7/2040	4400-17200	1300	20523
269	O. Among SANGLIR	N/A	M	Matriculate	Peon	Regular	8/24/1988	2/2/2015		Mokokchung	8/24/2048	4400-17200	1300	20523
270	Sashimongla	meyilepzuk	M	PU	Peon	Regular	11/15/1985	11/5/2005		Mokokchung	11/5/2040	4400-17200	1300	26284
271	Lanuonan	Lt. Tali	M	CI-X	Peon	Fixed	11/8/1978	6/28/2011		Mokokchung	11/8/2038	3400	--	3400
272	KewekoMerhu	Zhienglo	M	Matriculate	Peon	Regular	05/25/1979	09/03/2005		Mokokchung	05/25/2039	4400-17200	1300	26286
273	DevotoVenuh	Puchoneyi	M	CI-VIII	Peon	Regular	05/08/1985	08/07/2015		Phek	10/31/2045	4400-17200	1300	20245
274	Kekhwengulo	Lt. Dichu	M	CI-VIII	Peon	Regular	08/11/1968	02/02/1987		Phek	02/28/2022	4400-17200	1300	36178
275	C.Koniyemjong	C. Chuba Chang	M	CI-	Peon	Regular	7/19/1985	10/18/2004		Tuensang	10/18/2039	4400-17200	1300	19280
276	I. Moba Chang	Imlongchuba	M	BA	Peon	Regular	5/5/1975	10/18/2004		Tuensang	5/5/2035	4400-17200	1300	19280
277	Chumchamo Patton	Z.Chonchio Patton	F	Matriculate	Peon	Regular	12/12/1980	6/3/2011		Wokha	12/31/2040	4400-17200	1300	18951

278	EzanyimoNgullie	NzioNgullie	M	CI-VIII	Peon	Regular	3/8/1963	8/12/1992		Wokha	8/31/2023	4400-17200	1400	27617
279	Kugaho Sumi	Zhehovi	M	CI-VIII	Peon	Regular	5/16/1980	11/11/2014		Zuhheboto	10/31/2039	4400-17200	1400	22986
280	K.Kakheho Sumi	KhettoviSema	M	CI-VII	Peon	Regular	03/03/1964	06/24/1987		Zunheboto	06/30/2022	4400-17200	1800	30576
284	S. Liho Sumi	Ghoshika	F	CI-VIII	Peon	Regular	08/23/1982	11/25/2014		Zunheboto	11/31/2042	4400-17200	1400	21400
285	C.Thango Chang	M.Beso Chang	M	CI-X	Sweeper	Regular	4/6/1989	1/1/1900		Tuensang	1/1/1935	4400-17200	1400	26607
286	ChamchanoLotha	YanbemoLotha	F	CI-IX	Sweeper	Regular	9/7/1980	9/15/2013		Directorate	9/7/2040	4400-17200	1400	21940
287	Imlirenla	Sakutoshi	F	Matriculate	Sweeper	Regular	9/27/1979	2/11/2008		Mokokchung	9/27/2039	4400-17200	1400	25608
288	Kevilhou-ii	Rheichanyii	F	CI-	Sweeper	Regular	12/18/1976	10/18/2004		Kohima	10/31/2036	4400-17200	1400	20404
288	NzanoLotha	Zurenthung	F	CI-	Sweeper	Fix	3/10/1959	7/17/1996		Kohima		4400-17200	1300	15041
289	LobeniLotha	ChamongoLotha	F	CI-VIII	Sweeper	Regular	5/14/1965	2/17/1987		Wokha	2/28/2022	4400-17200	1400	30180
290	PongshomKonyak	Achung	F	CI-VII	Sweeper	Regular	5/8/1961	10/30/1984		Mon	10/30/2019	4400-17200	1400	27043
291	K. Semato	Lt. Kiyekhu	M	CI-VIII	Sweeper	Regular	12/17/1990	6/1/2016		Zunheboto	6/30/2050	4400-17200	1400	21400
292	Zonie-o Koza	Lt. Solhou	F	CI-IV	Sweeper	Regular	05/15/1985	06/06/2011		Phek	05/31/2045	4400-17200	1300	23183
293	Phyobenthang	Chemirao	M	CI-IV	Sweeper	Regular	4/18/1980	2/5/2008		Dimapur	4/30/2040	4400-17200	1300	21193
294	Meyesunep		M	CI-X	Chowkider	Regular				Directorate		4400-17200	1300	23480
295	Imlitoshi	Samatemsu	M	CI-VIII	Chowkider	Regular	12/23/1980	2/5/2008		Dimapur	12/31/2040	4400-17200	1300	20374
296	KhrieneizoMetha	Lt.Vilalie	M	CI-IX	Chowkidar	Regular	10/10/1980	10/18/2004		Kohima	10/31/2039	4400-17200	1300	21249
297	Seyam Konyak	Yakha	M	CI-VIII	Chowkidar	Regular	2/20/1963	1/10/1982		Mon	1/10/2017	4400-17200	1300	27043
298	Temjensowa	LT TSUKJEM	M	Matriculate	Chowkidar	Regular	5/21/1971	9/1/1977		Mokokchung	9/1/2012	4400-17200	1300	31258
299	YangseriSangtam	Lt. Tsalito	M	CI-VI	Chowkidar	Regular	7/21/1986	11/5/2005		Tuensang	11/5/2040	4400-17200	1300	14690
300	ZareniLotha	YisaoLotha	M	CI-VII	Chowkidar	Regular	2/15/1984	3/11/2002		Wokha	3/31/2037	4400-17200	1400	21791
301	Kedoutsolhi	Lt. Chizu	M	CI-VI	Chowkidar	Regular	12/10/1973	3/23/1998		Phek	3/31/2033	4400-17200	1300	20245
302	MugatoliZhimomi	Lt. TonitoZhimomi	M	CI.-12 th	Chowkider	Regular	12/1/1985	10/09/2014		Zunheboto	10/09/2045	4400-17200	1400	21400
303	Phyobenthang	Chimroa	M	PUc	Mali	Regular	4/18/1980	11/1/2004		Dimapur	11/1/2039	4400-17200	1300	19303

MANUAL-XI

The budget allocated to each of its agency, indicating the particulars of all plans, proposed expenditure and reports on disbursements made:

BE&RE 2016-17

(Rs. in Lakhs)

Sl. No	Items of Expenditures	Actuals 2015-16	Total Provision in BE2016-17 as printed in Demands for Grand's	Total Provision now proposed by the Deptt.in RE2016-17	Additional Provision proposed (col.5-4)
1	2	3	4	5	6
1	Salary	1018.56	1100.24	1100.24	0.00
2	Wages	2.52	2.52	2.90	0.38
3	Travel Expenses	19.99	10.00	23.00	13.00
4	Office Expenses	18.00	18.00	18.00	0.00
5	Motor Vehicles	61.14	53.00	102.65	49.65
6	Rent, Rates & Taxes	11.08	9.00	11.00	2.00
7	Materials & Supplies	-		-	
8	Machinery & Equipment	-		-	
9	Repairs & Maintenance	93.99	70.00	100.00	30.00
10	Minor Works	-	-	-	
11	Scholarship & Stipend	-	-	-	
12	Grant- in- aid	-	-	-	
13	Advertisement & Publicity	24.97	15.00	25.00	10.00
14	Others (to specify)(Training)	10.00	5.00	10.00	5.00
15	Equity Share G&ST	-	-	-	-
16	MACT	2.00	3.00	27.00	24.00
17	GRAND TOTAL:-	1262.97	1285.76	1419.79	134.03

Final expenditure during 2017-18

(Rs. in Lakhs)

Head of Account	Departmental Figures		
	Plan	Non-Plan	Non-Plan
2040 Sales Tax			
001 – Direction & Admn			
Salaries	-NIL-	225.47	
Wages	-NIL-	2.32	
Travel expenses	-NIL-	17.50	
Rent, rates & Taxes	-NIL-	5.00	
Office expenses	-NIL-	83.10	
Motor vehicle expenses	-NIL-	35.96	
Publication	-NIL-	30.00	
Excursion / Training	-NIL-	20.00	
Contribution Empowered Committee	-NIL-		
Maintenance	-NIL-	80.00	
001 - Total	-NIL-	499.35	
101-Collection Charges	-NIL-		
Salaries	-NIL-	914.42	
Wages	-NIL-	1.14	
Travel expenses	-NIL-	9.13	
Rent, rates & Taxes	-NIL-	3.74	
Office expenses	-NIL-	4.89	
Motor vehicle expenses	-NIL-	14.17	
Plan	-NIL-		
101 – Total	-NIL-	947.49	
001+101 = Grand Total	-NIL-	1446.84	
Plan, Non-Plan Grand Total (1446.84)			

(Rs. in Lakhs)

Head of Account	State Plan	Negotiated Loan	Total
4059-Capital outlay public Works			
Construction	50.00	100.00	150.00

MANUAL-XII

The manner of execution of subsidy programmes, including the amounts allocated and the details of beneficiaries of such programmes:

Not applicable to this Directorate.

MANUAL-XIII

Particulars of recipients of concessions, permits or authorizations granted by it:

Sales to or by Canteen Store Department for Defence personnel are allowed to pay tax at a concessional rate of 1% on all taxable goods under the Nagaland Value Added Tax Act,2005 as amended from time to time.

MANUAL-XIV

Details in respect of the information available or held by it, reduced in an electronic form:

GST: To make a common tax law for all the states and a common market, all other taxes like Excise, Vat, Customs etc were subsumed and Goods and Services Tax (GST) Act, was introduced in the country from 1st July, 2017. Details relating to GST can be accessed through a common portal www.gst.gov.in. It can be accessed for GST registration, after which, he can file returns, make online payment of tax etc.

Other Acts and Laws: Details of information relating to dealers registration numbers (TIN) under various tax laws and records of payment of Tax by such dealers are held by the Superintendent of Taxes of the Ward/District in-charge. Types of information available in electronic forms in www.nagalandtax.nic.in are as follows:

- i. All Acts and Rules of Taxation Laws administered by the department. VAT, CST etc.
- ii. Up to date amended rate of tax in the schedules.

- iii. User manual for 'taxsoft' application.
- iv. Tax awareness capsules.
- v. List of all e-services.
- vi. All the important Circulars and Notification including Gazette notifications with regard to taxation matters, whichever are necessary for public importance.
- vii. Annual Administrative Reports since 2009-10.
- viii. RTI manual.
- ix. Statistics.
- x. Contact details of senior officers.

*Details information available in electronic forms at www.nagalandtax.nic.in

MANUAL-XV

The particulars of information available to citizens for obtaining information, including the working hours of library or reading room, if maintained for public use:

There is no library room maintained by the department for public use. Application forms for registration, declarations and statutory forms, Clearance Certificate and Payment Challan Forms etc. are available in all the District Tax Offices. Any tax payer requiring such forms or any tax information may obtain the same from the Superintendent of Taxes of the District concern on all working days.**Help desk counter and websites:** The department helpdesk number is *03862248132* and the website is www.nagalandtax.nic.in

Office timing:

Morning	Evening
10:00 A.M	4:00 P.M

MANUAL-XVI

The names, designations and particulars of the Public Information Officers:

Sl. No.	Name of PIOs& APIO	Designation	Jurisdiction/District/Zones	Appellate authority
1.	Shri C Lima Imsong	Deputy Commissioner of State Taxes (HQ)	Directorate Dimapur	Commissioner of Sate Taxes
2.	Shri. Imosong Imsong	Deputy Commissioner of State Taxes	Dimapur	Commissioner of Sate Taxes
3.	Smti. Areni Patton	Deputy Commissioner of State	Kohima	Commissioner of

		Taxes		Sate Taxes
4.	Smti. Lirila Sangtam	Deputy Commissioner of State Taxes	Mokokchung	Commissioner of Sate Taxes
5.	Shri. Atener Aier	Superintendent of State Taxes	Wokha	Commissioner of Sate Taxes
6.	Shri. Vekhozo Dozo	Superintendent of State Taxes	Phek	Commissioner of Sate Taxes
7.	Shri. Y.Toshi Yimchunger	Superintendent of State Taxes	Mon	Commissioner of Sate Taxes
8.	Smti. Cheivitsu	Superintendent of State Taxes	Zunheboto	Commissioner of Sate Taxes
9.	Shri. P.Muchu Shri.Y.Chuntuk Phom	Superintendent of State Taxes	Tuensang, Kiphire & Longleng	Commissioner of Sate Taxes

MANUAL-XVII

Such other information as may be prescribed:

Since the inception of the Department, the Department has been extending all possible assistance to the Tax Payers and facilitated them to comply with the provisions of the Tax Laws Enforced in the State. From time to time, the Department also published the rate of tax in all local dailies for general information and compliance by all the tax payers.

The RTI Act 2005 is actively enforced in the Department in letter and in spirit to maintain utmost transparency and accountability in its official dealings and functioning. The Department has designated the Directorate to facilitate the citizens with any tax information or any information about the activities and functioning of the Department as a matter of right.

This information Manual is updated as on March 31st 2018.

(C.LIMA IMSONG)
Deputy Commissioner of State Taxes (HQ)
Nagaland: Dimapur.

