

INFORMATION TO BE PUBLISHED

UNDER SECTION IV (1) (b) OF THE RIGHT TO INFORMATION ACT 2005



THE COMMISSIONER OF STATE TAXES

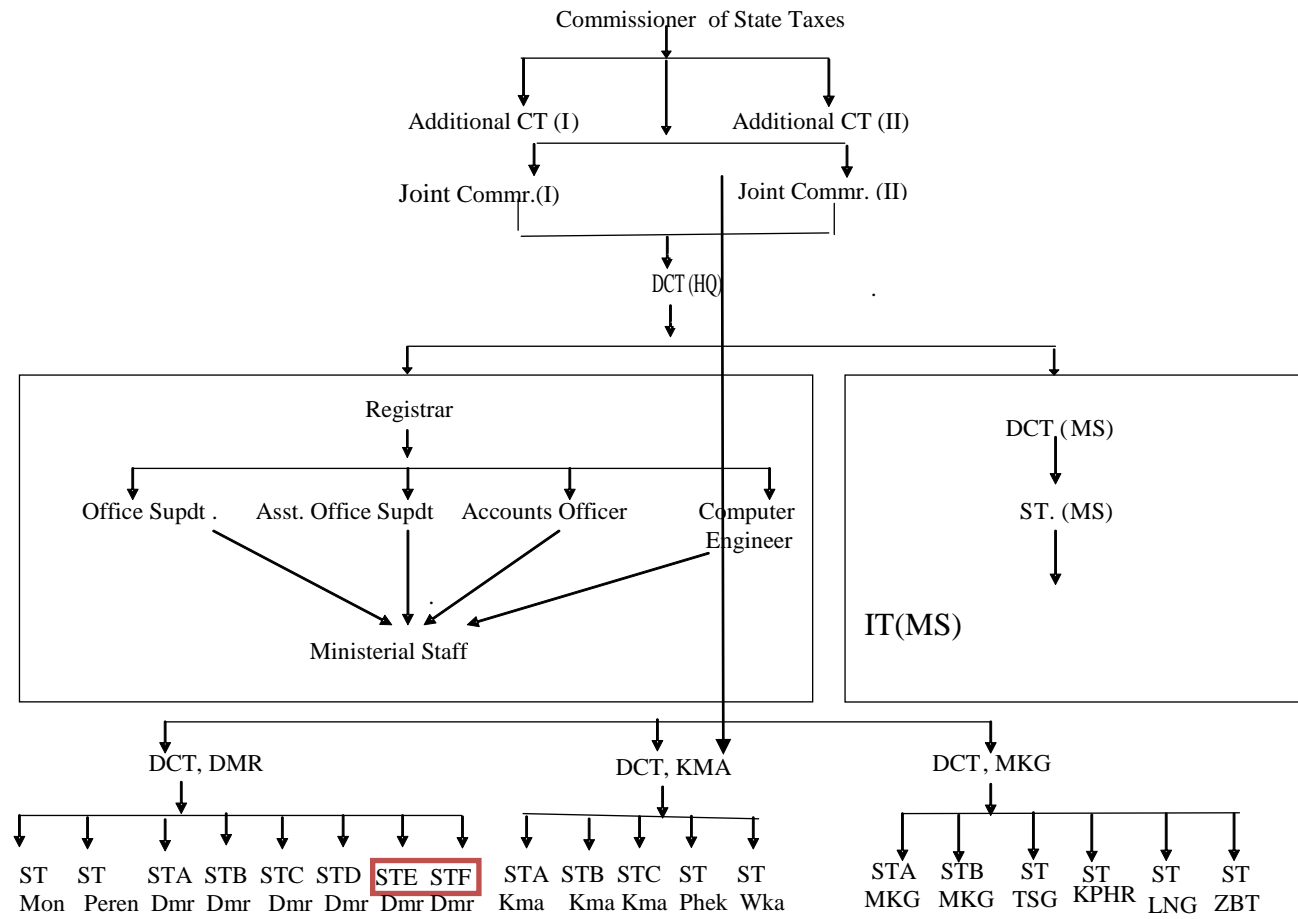
DEPARTMENT OF STATE TAXES

Nagaland: Dimapur

2018 - 19

MANUAL -1

Organizational Chart/Organogram of the Department



History and Background of the the department was first created and functioned:

Till attainment of Statehood, the then Naga Hills District was an administrative Unit under Assam. Among others, Sales Tax Law of Assam was extended to Naga Hills effective from 2-2-1948. However, it is not available on record, to ascertain whether any revenue was collected from the Naga Hills District.

The Department of Taxes, Nagaland was established in August 1964, with the appointment of the Commissioner, Nagaland as the ex-officio Commissioner of Taxesvide Government Notification NO.SGN.182/63/29 (a) 14-6-63

A full-fledged Commissioner of Taxes was created on 20th August 1976, with its Headquarters at Kohima. In the same year, the Headquarter was shifted down to Dimapur, the Commercial hub of the State, for better tax administration. A post of Superintendent of Taxes was also created and an Officer from Assam Taxation Service was brought on deputation to start the functioning of the Department along with skeleton staff.

With the establishment of the Department, the question of adoption of the existing Taxation Laws of Assam as applied to the erstwhile Naga Hills District to the newly formed State by the Nagaland Adoption of Laws Order, 1965 were examined but due to some confusion the provisions of Taxation Laws could not be enforced by adoption/modification. Meanwhile, the Government took a decision to have its own Laws which led to the enactment of the following Taxation Laws.

1. The Nagaland Sales Tax Act, 1967.
2. The Nagaland Finance (Sales Tax) Act, 1967.
3. The Nagaland (Sales of Petroleum & Petroleum Products, including Motor spirit and Lubricants) Taxation Act, 1967.
4. The Nagaland Passenger and Goods Taxation Act, 1967.
5. The Nagaland Profession, Trade, Callings and Employment Taxation Act, 1968.

The above laws could not be implemented immediately, even after the assent of the President. It was only with the enactment of Rules in respect of each of the Acts in 1970, that all the above Acts, except the Passengers and Goods Taxation Act, were implemented in the State. The Revenue Collection made during the first year of implementation i.e., 1970-71 stood as under:

Year	NST	Pro.Tax	Am.Tax	Total(in lakhs)
1970-71	14.22	1.42	2.92	18.56

Brief Function of Every Branch:

Name of branches	Functions
1. General	<ol style="list-style-type: none">1. Statistics2. Election matters3. Training/Departmental examination4. Public relation with other department5. Liaison with central and other state department6. All miscellaneous matters of general nature.
2. Establishment Branch	<ol style="list-style-type: none">1.
3. Revenue branch	<ol style="list-style-type: none">1. Revenue budget and collection2. All matters related to revenue of the department
4. Legal branch	<ol style="list-style-type: none">1. All taxation matters including amendment of laws and orders2. Appeal and revision3. Issue of statutory forms and various other forms4. RTI
5. Audit branch	<ol style="list-style-type: none">1. Inspection2. Internal and external audit including PAC matters3. Certificate cases4. Vigilance/allegations and complaints
6. Computer branch	<ol style="list-style-type: none">1. Management of Tax-software application2. Management of Department's website3. All matters relating to computerization of the department.
7. Stationery branch	<ol style="list-style-type: none">1. Stock maintenance of non-statutory forms2. Postal services and stamp3. Management of conference hall and office library4. All matters related to stationery
8. Receipt and dispatch	<ol style="list-style-type: none">1. All matters relating to receipt and dispatches

Details of location, postal address, contact numbers, especially PIOs’:

SI No	Name	Designation	Phone No (O)	Mobile No
1	Shri. Kesonyu Yhome, IAS	Commissioner of State Taxes Nagaland: Dimapur.	03862- 248543 FAX- 226459	
2	Mr. Y. Mhathung Murry	Additional Commissioner of State Taxes (I) Nagaland: Dimapur.	03862-248535	9436003596
3	Mr. Wochamo Odyuo	Additional Commissioner of State Taxes (I) Nagaland: Dimapur.		9436007322
4	Mrs KilangNaro Longchar	Joint Commissioner of State Taxes (II) Nagaland: Dimapur.	03862-248540	9436603922
5	Mrs. Imtilemla Longkumer	Joint Commissioner of State Taxes (II) Nagaland: Dimapur.		9436019785
6	Mr. C Lima Imsong	Deputy Commissioner of State Taxes (HQ), Dimapur Nagaland. (SPIO)	03862-248542	9436003727
7	Mr. Imosong Imsong	Deputy Commissioner of State Taxes Dimapur Zone, Nagaland. (PIO)		9402696695
8	Mrs. N. Areni Patton	Deputy Commissioner of State Taxes Kohima, Kohima Zone : Nagaland. (PIO)	0370-2210468	7085169839
9	Miss Lirila Sangtam	Deputy Commissioner of State Taxes Mokokchung Zone, Mokokchung Nagaland. (PIO)	0369-226447	9436017204
10	Mr. Shechong Konyak	Deputy Commissioner of State Taxes, Mobile Squad, Nagaland Dimapur. (PIO)		9089321877
11	Mr Bendangchuba	Superintendent of State Taxes, Mobile Squad, Dimapur Nagaland.		9436003727
12	Mrs. Orenponi Yanthan	Superintendent of State Taxes, Kohima Ward C Kohima Zone, Dimapur Nagaland.		9774574357
13	Mrs. Nitoli sema	Superintendent of State Taxes, Dimapur Ward A, Nagaland.		9436013329
14	Mr.I.Mughato Aye	Superintendent of State Taxes, Ward C Dimapur Zone, Dimapur, Nagaland.		9436002309
15	Mrs. Chevetshu Nyuthe	Superintendent of State Taxes, Zunheboto Nagaland.(PIO)		9436066620
16	Mr. Vekhozo Dozo	Superintendent of State Taxes, Phek, Nagaland.(PIO)		8131916410
17	Mrs Tokatoli	Superintendent of State Taxes, Dimapur Ward F,Dimapur Zone, Nagaland.	03692-226447	9436012514
18	Mr Zulutemu	Superintendent of State Taxes, Dimapur Ward B, Dimapur Nagaland.		9436011101
19	Mr. P. Muchu Khamniungan	Superintendent of State Taxes, Dimapur Ward E	03861-220471	9436830155
20	Miss.L.Yanbeni	Superintendent of State Taxes, Ward A, Kohima Nagaland.		9402809264
21	Mr. Aowati	Superintendent of State Taxes, Mokokchung A Nagaland.		9436006583
22	Mr Poshutho	Superintendent of State Taxes, Kohima Ward A, Nagaland.		9856780808
23	Mr Atener Aier	Superintendent of State Taxes Wokha, Nagaland. (PIO)	0370-2290468	9612097040
24	Mr. Chingtuk Phom	Superintendent of State Taxes Tuensang, Nagaland. (PIO)	223189	9612126295
25	Mr Jimyang Imlong	Superintendent of State Taxes Ward B Dimapur Nagaland (PIO)	03867-220303	9436079834
26	Mr Toshi Yimjunger	Superintendent of State Taxes Mon, Nagaland. (PIO)		9005660663
27	Mrs. Chubanaro	Superintendent of State Taxes, Mokokchung Ward A, Mokokchung Nagaland.		9612432930
28	Mr. Imlisanen Longchar	Computer Engineer, O/O Commissioner of State Taxes, Dimapur Nagaland	0369-248132	9436015144
29	Mrs. Narola Imti	Account Officer O/O Commissioner of State Taxes, Dimapur Nagaland		

MANUAL-II

Powers and Duties of Officers

Sl. No.	Name	No. of Employees	Powers and Duties
1	Commissioner of State Taxes	1	Overall control and supervision of the functioning of the department including Appellate Authority under RTI Act, 2005
2	Additional Commissioner of State Taxes	2	a) Revenue, Legal, Audit, Computerization, All matters related to GST and all matters not listed. b) Looks after DDO and Accounts, Establishment, General and Stationery
3	Joint Commissioner of State Taxes, (I)	2	All matter relating to Revenue, Establishment, Administration, Legal, Audit, Computerization and all matters related to GSTN Looks after Accounts, General, Stationery and Stationery Forms.
4	Deputy Commissioner of State Taxes (HQ)	1	General Branch,, Revenue, Training Centre Management, RTI-PIO and All legal issues under GST
5	Deputy Commissioner of State Taxes	4	Certificate officer, DDO and APIO under RTI Act, 2005
6	Superintendent of State Taxes	17	Assessing and Registering authority
7	Registrar	1	Supervision and monitoring of all branches. Will deal with files from Establishment Branch, Revenue Branch, Accounts Branch, Computer Branch and all other resuuary issues
8	Computer Engineer and IT Nodal Officer	1	Nodal Officer on all IT matters including MMP-CT, GSTN etc. and Computerization
9	Office Superintendent	1	Legal Branch, General Branch and Audit Branch Looks after preparation of revenue target, MPR, transportation, issue of state and central statutory forms.
10	Account Officer	1	All Accounts and Establishment matters of the department
11	Statistical officer	1	All statistical maters of the department
12	Inspectors of State Taxes	45	Field inspection and preparation of reports Monitor the flow of goods movement both inward and outward as well as transit.

Functions and Duties

Details of powers and duties of different levels of employees:-

- (a) **Commissioner of State Taxes:** The post of Commissioner is manned by an IAS officer. He is the head of the department. He exercises overall control and supervision for effective and smooth tax administration and enforcement of the Taxation Laws applicable in the State. The Commissioner is the Revisional Authority in the department and revises any order passed by any of his officers under the Acts and Rules in force and pass such orders as he may deem fit in accordance with the provisions of the tax laws. He is the link between the department and the Government. The Commissioner is also the Appellate Authority under the RTI Act, 2005.
- (b) **Additional Commissioners of State Taxes:** Assists the Commissioner of Taxes and exercises such powers and functions as may be delegated to him under the Acts and Rules from time to time. The Additional Commissioner of State Taxes primarily looks after revenue and general establishments of the department. The senior most Additional Commissioner State Taxes functions as the head of the department in the absence of the Commissioner.
- (c) **Joint Commissioner of State Taxes:** Assists the Commissioner of State Taxes and Additional Commissioner of State Taxes and exercises such powers as may be delegated under the Acts and Rules enforced in the State. The Deputy Commissioner of State Taxes also acts as the Drawing & Disbursing officer of the Directorate.
- (d) **Deputy Commissioner of State Taxes:** Exercises control and supervision over the functioning of the Wards and District Superintendents and Inspectors under his Zones. He acts as the Certificate Officer for recovery of tax arrears under the Bengal Public Demand Recovery Act, 1913. He also acts as the Appellate Authority of the Zone. He/She monitors the performance of each Ward and District and ensures that the officers and staff function as per provisions of the Taxation laws. He/She also acts as the Drawing and Disbursing officer of the Zonal office. He/She also exercises such powers as may be delegated to him under the provisions of the various taxation laws enforced in the State.
- (e) **Superintendent of State Taxes:** Exercises such power and functions as may be delegated under the provisions of Taxation Laws enforced in the State. He/She acts as the assessing as well as registering officer of the Ward or District. He/She also monitors filing of tax returns and payment of tax by the dealers. He/She also ensures that all the liable dealers under his/her jurisdiction are registered and carries on business as per the provisions of Tax laws enforced in the State. The Superintendent of State Taxes acts as the Drawing and Disbursing officer and also represents the department at the District level. Superintendent of State Taxes maintains records of registration certificate issued and cancelled, Daily Collection Register, Issue and Stock Register of Declaration and Statutory Forms, and compiles the monthly collection statement. He/She enforces the tax laws and ensures tax compliance by all concerned.
- (f) **Inspector of State Taxes:** Inspectors are the field officers of the department. They function under the direct supervision of the Superintendents of State Taxes of the Ward/District to which they are attached or posted. They keep vigil on the business activities of the tax payers. They also man the Taxation Check Gates in the State. They are responsible for inspection and filing of reports pertaining to the business transactions of dealers at regular intervals. They also verify the accuracy of the information disclosed by the dealers in the applications for registration and also investigate cases relating to evasion of tax and report to the Ward/District Superintendents of Taxes. They also maintain Survey Register in respect of the Ward/District.
- (g) **Checker:** Since the abolition of Check Posts after the introduction of GST since 1st July, 2017, all the Checkers previously employed at the Check post are attached to the Commissioner of State Taxes temporarily.
- (h) **Head Assistant:** Head Assistant heads ministerial staff of all the districts and zone offices. They control and supervise the functioning of the ministerial staff for smooth disposal of office works.

- (i) **UDA:** UDA looks after the accounts and also act as the cashier of the District and Zonal office and also assist the Head Assistants in all establishment and other general matters.
- (j) **LDA cum Computer Assistant:** They maintain the dealer's proceeding files and flag it to the controlling officers and keep the proceeding files updated in time. They are the data entry operators of the district and ward offices.
- (k) **Typist:** All official matters are being typed by the typists. They ensure accuracy and clean typing of officials Letter.
- (l) **Driver:** Drivers are attached with officers who are attached with official vehicles. They ensure that the vehicles are clean and in good condition at all time to drive the vehicles for bona-fide official duty
- (m) **Peon:** Peons are responsible for handling office files .They also attend the officers.
- (n) **Sweeper:** Sweeper sweeps the office regularly and keep the office neat and clean.
- (o) **Chowkider:** Chowkider handles the office keys and keep the office open and closed as per office timing and ensures security of the office.
- (p) **Mali:** Mali takes care of the gardens in the office compound.

Ministerial staff in the Directorate:

- (a) **Registrar:** He co-ordinates the activities and functioning of the ministerial staff attached to different branches in the Directorate. He supervises the movement of the files and ensures maintenance of proper records and receipt of letters. He acts as the dictionary of the Directorate and assists the senior officers on all important official matters.
- (b) **Office Superintendent:** The Office Superintendent assists the Registrar in smooth functioning of the Directorate. He ensures accuracy of all accounts matters in the Directorate. He prepares the Department's budget, monitors the expenditure of the department and ensures regularity and attendance of the ministerial staff.
- (c) **Assistant Office Superintendent:** He works out and prepares the revenue target, maintain and compile the revenue collection figures of the department ,monitor the MPR of the districts and ward offices, monitor the POL and annual maintenance of the department's vehicle and also monitor and maintain the stock registers of statutory forms and other state forms.
- (d) **Accounts officer:** Accounts officer monitor and assist the department in all account and establishment matters to maintain accuracy of records at all time.
- (e) **Senior Accountant:** He assists the Office Superintendent in all accounts matters. He prepares pay and allowances and performs Treasury duties. He is responsible for drawal and disbursement of bills in the Directorate.
- (f) **Personal Secretary to Commissioner:** He personally assists the Commissioner for smooth disposal of official works
- (g) **Computer Engineer:** He heads the computer cell and ensures its safe and smooth functioning. He also looks into all matters relating to computerization.

MANUAL-III

**Procedure followed in decision making process including channels of supervision and accountability.
Job description and responsibilities of each level of staff**

Sl. No.	Name and Designation	Work assigned/Functions
1	Shri.Kesonyu Yhome, IAS, Commissioner of State Taxes	Overall control and supervision of the functioning of the department including Appellate Authority under RTI Act, 2005
2	Shri. Y. Mhathung Murry, Additional Commissioner of State Taxes (I)	Revenue, Legal, Audit, Computerization, All matters related to GST and all matters not listed
3	Shri. Wochamo Odyou, Additional Commissioner of State Taxes(II)	Looks after Establishment, General GSTN,Legal, Audit, and Stationery
	Smti Kilangnaro Longchar, Joint Commissioner of State Taxes, (I)	Looks after Accounts, General, Revenue Stationery and Stationery Forms.
4	Smti Imtilemla Longkumer, Joint Commissioner of State Taxes, (II)	All matter relating to Administration, Computerization, Establishment, and all matters related to DDO and Accounts.
6	Shri C Lima Imsong, Deputy Commissioner of State Taxes (HQ)	General Branch, Revenue, Training Centre Management, RTI-SPIO and All legal issues under GST
7	Registrar	Supervision and monitoring of all branches. Will deal with files from Establishment Branch, Revenue Branch, Accounts Branch, Computer Branch and all other resuary issues
8	Shri. Imlisanen, Computer Engineer and IT Nodal officer	Nodal Officer on all IT matters including MMP-CT, GSTN etc. and Computerization
9	Office Superintendent	Legal Branch, General Branch and Audit Branch Looks after preparation of revenue target, MPR, transportation, issue of state and central statutory forms.
10	Smti. Narola ImtiAccount Officer	All Accounts and Establishment matters of the department
11	Statistical officer	All statistical maters of the department
12	Asstt. Office Supdt	Legal Branch, General Branch and Audit Branch
13	Asstt. Office Supdt.	Establishment, Works Programme, and All legal issues under GST
Deputy Commisioner of State Taxes, Dimapur Zone, Dimapur		
14	Shri Imosong Imsong, Deputy Commissioner of State Taxes Dimapur Zone	Additional Charge of Dimapur Zone. Certificate officer, DDO , APIO under RTI Act, 2005
15	Shri Zulutemsu, Suptdt. of State Taxes, Dimapur Ward- D	Assessing and Registering authority
16	Smti Nitoli, Suptdt. of State Taxes, Dimapur Ward-A	Assessing and Registering authority

16	Smti Tokatoli, Suptdt. of State Taxes, Dimapur Ward-F	Assessing and Registering authority
17	Suptdt. of State Taxes, Peren	Assessing and Registering authority and APIO under RTI Act, 2005
18	Shri Mughato, Suptdt. of State Taxes, Dimapur Ward-C	Assessing and Registering authority
19	Shri Jimyang Imlong Superintendent of State Taxes, Ward B	Assessing and Registering authority
20	Shri. Muchu Khiam, Superintendent of State Taxes Dimapur Ward E	Assessing and Registering authority of Petroleum & Amusement Tax
21	Inspectors	Field inspection and preparation of reports.
Deputy Commissioner of State Taxes, Kohima Zone, Kohima		
22	Smti Areni Patton, Deputy Commissioner of State Taxes.	Certificate officer, DDO and PIO under RTI Act, 2005
23	Smti Yanbeni, Suptdt. of State Taxes, Kohima	Assessing and Registering authority
24	Smti Orenponi, Suptdt. of State Taxes, Kohima Ward-A,	Assessing and Registering authority
25	Shri Pushotho Suptdt. of State Taxes, Kohima Ward	Assessing and Registering authority
26	Shri. Atener Superintendent of State Taxes, Wokha	Assessing and Registering authority, DDO and APIO under RTI Act, 2005
27	Shri V. Dozo, Suptdt. of State Taxes, Phek	Assessing and Registering authority, DDO and APIO under RTI Act, 2005
28	Inspectors	Field inspection and preparation of reports.
Deputy Commissioner of State Taxes, Mokokchung Zone, Mokokchung		
30	Smti Lirila Sangtam Deputy Commr of State Taxes, Mokokchung	Certificate officer, DDO and PIO under RTI Act, 2005
31	Shri Aowati, Suptdt. of State Taxes	Assessing and Registering authority
33	Smti. Chubanaro Suptdt. of State Taxes, Mokokchung Ward A	Assessing and Registering authority
33	Shri Chingtuk Phom, Suptdt. of State Taxes, Tuensang, Kiphire and Longleng	Assessing and Registering authority, DDO and APIO under RTI Act, 2005
34	Chevitsu Nyuthe Superintendent of State Taxes, Zunheboto	Assessing and Registering authority, DDO and APIO under RTI Act, 2005
35	Inspectors	Field inspection and preparation of reports.
Deputy Commissioner of State Taxes (MS), Dimapur		
38	Shri Shechong Nekong, Deputy Commissioner of State Taxes (MS)	Supervise the functioning of the Mobile Squad and APIO under RTI Act, 2005
39	Shri Bendangchuba Suptdt. of State Taxes	Conduct search and seizures, Assist the Deputy Commissioner of State Taxes (MS)

	(MS)	
40	Inspectors,	Assist Superintendent of State Taxes and Deputy Commissioner of State Taxes.

MANUAL-IV

The norms set up for discharging of its functions

Since the inception of the Department, the Department has been extending all possible assistance to the Tax Payers and compliance with the provisions of the GST Laws Enforced in the State are encouraged. From time to time, the Department also publishes GST FAQs in all local dailies for general information and compliance by all the tax payers.

Manner in which different types of works are attended to (e.g. ordinary, Urgent and confidential matters:

The functions of the department are quasi-judicial. All matters relating to implementation of various taxation laws enforced in the state are attended to as per the provision of the Acts and Rules and are classified as confidential matters. Updating of RTI Manual and furnishing information under the RTI Act, 2005 and other important correspondences with state and central government offices are attended to on priority basis depending on the nature of the case and are classified as urgent matters. Other normal and regular correspondences are classified as routine matters.

MANUAL-V

Acts and Rules, Regulations, Instructions, Manuals and Records held by it or under its control or used by its employees for discharging its functions:

- (a) Goods and Services Tax Act, 2017
- (b) The Nagaland (Sales of Petroleum & Petroleum Products including Motor Spirit and Lubricants) Taxation Act, 1967 and Rules, 1970;
- (b) The Nagaland Professions Trades, Calling and Employment Taxation Act, 1968 and Rules made thereunder;

In addition, the Nagaland Government Servant Conduct Rules, 1968; the Nagaland Service (Discipline and Appeal) Rules, 1967; Leave Rules; F.R./S.R., R.O.P. Rules, Central Treasury Rules, Pension Rules and other Government standing orders and instructions issued from time to time are followed by its employees for discharge of official duties and functions.

MANUAL-VI

A Statement of Categories of Document that are Held by it or Under its Control.

The department maintains files and documents that can be classified 'secret' 'confidential' and 'routine' are kept in the custody of the various branches as per internal work allocation. Correspondences relating to proper and better administration of the various taxation laws enforced in the state and smooth functioning of the department, notifications, circulars, Office memorandum etc., are classified as Administrative. Matters relating to appointment transfer and posting, service books, APAR etc., are classified as Establishment.

Sl. No	Nature/ Category of the Document	Name of the Document	Procedure to obtain the Document	Held by / Under Control of
	Secret, Confidential and Routine	Notifications, Circulars, Office Memorandum	By spl courier	Commissioner

MANUAL – VII

The particulars of any arrangements that exists for consultation with or representation by the members of the public in relation to the formulation of its policy or implementation thereof:

The department, being a technical and quasi-judicial in nature implements and enforces the tax laws and ensures better tax collection. The department gives its views as and when sought for and also suggests and proposes to the government for suitable amendment of the Act and Rules in the interest of public revenue. We have a common GST portal, Pan India. For better tax services, the department has developed its own website for delivery of e-services to the tax payers and the citizens. It has a helpdesk to attend queries relating to any tax matters.

MANUAL – VIII

A statement of the Boards, Councils, Committees and other bodies consisting of two or more persons constituted as its part or for the purpose of its advice, and as to whether meetings of those Boards, Councils, Committees and other bodies are open to the public, or the minutes of such meetings are accessible to the public:

The department has two levels of DPC s. The DPC for the gazette officers consist of the Chairman of the NPSC as Chairman, Finance Commissioner or his nominee as member, Secretary, P&AR or nominated by the Secretary P&AR as member and Commissioner of Taxes or his subordinate officer as member secretary. The DPC for the non-gazetted subordinate staffs consists of Commissioner of Taxes as Chairman, one departmental senior officer as member secretary, representative from P&AR as member and representative from Finance department as member.

The department also constitutes Selection Boards from time to time for appointment of various posts in the department. In addition, Departmental Screening Committees are also constituted from time to time to examine and clear grant of financial up gradation benefits to its employees under A.C.P Scheme.

Manual –IX

A Directory of its Officers and Employees:

<i>Sl. No.</i>	<i>Name</i>	<i>Designation</i>	<i>Place</i>	<i>Mobile number</i>
1	Shri. Kesonyu Yhome, IAS	Commissioner of StateTaxes	Dimapur	
2	Shri. Y. Mhathung Murry	Addl. Commr. of StateTaxes (I)	Dimapur	9436003596
3	Shri. Wochamo Odyuo	Addl. Commr. of StateTaxes (II)	Dimapur	9436012291
4	Smti. Kilangnaro Longchar	Jt.Commr. of StateTaxes (I)	Dimapur	9436012177
5	Smti Imtilemla Longkumer	Jt.Commr. of StateTaxes (II)	Dimapur	9436019785
6	Shri. C Lima Imsong	Deputy Commissioner of StateTaxes(HQ)	Dimapur	9436003727
7	Smti. Narola Imti	Accounts Officer	Dimapur	9436060966
8	Shri. Imlisanen Longchar	Computer Engineer	Dimapur	9436015144
9	Shri. Sukdew Kumar Chetri	Steno Gr-II Sr.	Dimapur	
10	Shri. Rongpangmeren	Steno Gr-III	Dimapur	9436600751
11	Smti. Imtilangla Lkr	Steno (Gr-III)	Dimapur	9863993232
12	Smti. Apokla Jamir	Steno Gr-I on attachment	Dimapur	
13	Shri. Vingulie Mepfhuo	UDA	Dimapur	8787690857
14	Smti. Flora	LDA	Dimapur	8794215144
15	Shri Mhabemo	UDA	Dimapur	9436267403
16	Shri. Shime Jamir	LDA (Contract)	Dimapur	8794460304
17	Smti. J.Zuchano Kikon	LDA (Contract)	Dimapur	7628836547

18	Smti. Eunice Yepthomi	LDA (Contract)	Dimapur	8415026261
19	Shri. Subonrmeren Ao	LDA (Contract)	Dimapur	9856981973
20	Smti. Nikmenmenla Changkiri	LDA (Contract)	Dimapur	9811698405
21	Shri. Wingambo	LDA (Contract)	Dimapur	9402042454
22	Shri. Visielhou Chupuo	LDA (Contract)	Dimapur	9774610379
23	Shri. Zasivilie Chasie	Analyst	Dimapur	9856257358
24	Smti. Bendangkokla	Typist Gr-III	Dimapur	9862438773
25	Kmr. Bamzeu Liegise	Typist Gr-I	Dimapur	9089686169
26	Kmr. Vitoungu-ü Chasie	Typist. Gr.-II	Dimapur	9774708264
27	Shri. Alemwati	Duftry	Dimapur	9436642595
28	Shri. Tongpanglepden	Peon	Dimapur	
29	Shri. Lenkhomang	Peon	Dimapur	8974455968
30	Shri. Asakho	Peon	Dimapur	8119050329
31	Shri. Tsito	Peon	Dimapur	
32	Shri. Kidiutso	Peon	Dimapur	
33	Smti. Lily	Peon	Dimapur	9615548268
34	Smti. Zubeni	Peon	Dimapur	9612500277
35	Shri. Thilixu Aye	Peon	Dimapur	
36	Shri. Solomon	Driver	Dimapur	
37	Shri. Jasper	Driver	Dimapur	
38	Shri. Roly	Driver	Dimapur	
39	Shri. Sashiyongdang	Driver	Dimapur	
40	Shri. Pranab Phonglo	Driver	Dimapur	
41	Shri. Nnio Mirry	Driver	Dimapur	
42	Shri. Meyesunep	Chowkider	Dimapur	
43	Shri. Prem Bahadur	Driver (MS)	Dimapur	
44	Shri. Tsanthungo Murry	Driver(MS)	Dimapur(MS)	
45	Shri. Suresh Thapa	Driver(MS)	Dimapur(MS)	
46	Shri.Orenthung	Driver (MS)	Dimapur(MS)	
47	Shri.L.Shechong Konyak	Deputy Commissioner of State Taxes	Dimapur(MS)	9402848366
48	Shri. Bendangchuba	Superintendent of State Taxes	Dimapur (MS)	9206150205
49	Smti Erika Swu	Inspector of State Taxes	Dimapur (MS)	8575969722
50	Shri Merenchuba	Sr. Inspector of State Taxes	Dimapur (MS)	9856894566
51	Shri Yanrenthung	Sr. Inspector of Taxes	Dimapur (MS)	9862875382
52	Shri Langphong Wanmai	Inspector of Taxes	Dimapur (MS)	9862853466

53	Smti. Liyingbeni Kikon	Inspector of Taxes	Dimapur (MS)	8794674726
54	Shri Nchumbemo	U.D.A.	Dimapur (MS)	9612683532
55	Kmr. Chumbeni Murry	UDA	Dimapur (MS)	8014427279
56	Smti.Wabangmenla	L.D.A	Dimapur (MS)	9436601792
57	Smti. Nisheli Awomi	LDA (Contract)	Dimapur (MS)	8787450252
58	Smti. Inatoli Sema	LDA (Contract)	Dimapur (MS)	7005658557
59	Shri. Kezhangulie Kire	LDA (Contract)	Dimapur (MS)	
60	Shri. Vikato	LDA (Contract)	Dimapur (MS)	
61	Shri. Irangteing	LDA (Contract)	Dimapur (MS)	7005775456
62	Shri. Albert Mero	LDA (Contract)	Dimapur (MS)	
63	Shri. Seve Koza	LDA (Contract)	Dimapur (MS)	
64	Shri. Sakumongba Longchar	LDA (Contract)	Dimapur (MS)	
65	Shri. Watimeren	LDA (Contract)	Dimapur (MS)	
66	Shri.Pongsen	Checker	Dimapur (MS)	9856583843
67	Shri.Imtiyanger	Checker	Dimapur (MS)	9402988334
68	Shri.Sentiyanger	Checker	Dimapur (MS)	9436178667
69	Shri. K.Tochi	Checker	Dimapur (MS)	9402009921
70	Shri.Merentemjen	Checker	Dimapur (MS)	9436424665
71	Shri.Aman Konyak	Checker	Dimapur (MS)	9612315627
72	Shri.R. Odyuo	Checker	Dimapur (MS)	9436260943
73	Shri.Arenjenba.	Checker	Dimapur (MS)	8575770182
74	Shri.Velato Thira	Checker	Dimapur (MS)	9856309030
75	Shri.Nievizokho	Checker	Dimapur (MS)	9856681165
76	Shri.Langlem Konyak	Checker	Dimapur (MS)	9436602516
77	Shri.Mhasilhousier	Checker	Dimapur (MS)	9856359668
78	Shri.Limatongzuk	Checker	Dimapur (MS)	9774195956
79	Shri. Anato	Checker	Dimapur (MS)	9856827914
80	Shri. Rangteileu	Checker	Dimapur (MS)	9436211328
81	Shri. Hotovi Achumi	Checker	Dimapur (MS)	9615936853
82	Smti. N.Hetoli	Checker	Dimapur (MS)	9436425394
83	Shri. Z. Vikato	Checker	Dimapur (MS)	8014481152
84	Shri. Moanungba	Checker	Dimapur (MS)	9436267728
85	Shri.Shempha Konyak	Checker	Dimapur (MS)	9436446813
86	Shri.Nikheto	Checker	Dimapur (MS)	8731888545
87	Shri. Hetovi Chishi	Checker	Dimapur (MS)	
88	Shri. Hotolu Z.Yeptho	Checker	Dimapur (MS)	
89	Shri. Jangkhokam	Peon	Dimapur (MS)	8729978969
90	Shri.Imnasashi	Peon	Dimapur (MS)	
91	Shri. Wochumo Odyuo	Peon	Dimapur (MS)	9612191896

92	Shri. Atoi	Peon	Dimapur (MS)	9436267501
93	Shri Akheto	Peon	Dimapur (MS)	
94	Shri Artong	Peon	Dimapur (MS)	9089332022
95	Shri Chingtuk Phom	Superintendent of State Taxes	Tuensang	9612126295
96	Smti I.Imsejungla	Inspector of State Taxes	Tuensang	8575017641
97	Shri. Thsidilong	Inspector of State Taxes	Tuensang	9612171167
98	Shri. Boska K Yeputhomi	Inspector of State Taxes	Tuensang	8413002226
99	Shri. Kekhrieselie Khezhie	Inspector of State Taxes (Contract)	Tuensang	9863358695
100	Shri Nzanbemo	HA	Tuensang	9436261441
101	Shri. Bimomo	U.D.A.	Dimapur	9862671759
102	Shri.Rangsingba Sangtam	U.DA	Tuensang	9402644859
103	Shri Likhumse Sangtam	LDA	Tuensang	9612361447
104	Shri Pesing Khamniungam	LDA Contract	Tuensang	8974666147
105	T. Chimkila	Typist	Tuensang	9436073576
106	Shri C. Sulim	Driver	Tuensang	9402633991
107	Shri I. Moba	Peon	Tuensang	9612969300
108	Shri. Khoniyemjong	Peon	Tuensang	8732074774
109	Shri.L.Shingnia Khamniungam	Peon	Tuensang	9862414406
110	Shri. L. Longshong Phom	Peon	Tuensang	9612098336
111	Shri Yangseri	Chowkidar	Tuensang	9774326967
112	Shri.TetnsomongJ. Sangtam	Peon	Kiphire	8732096695
113	Shri C. Thango Chang	Sweeper	Tuensang	8415824975
114	Shri. Vekhozo Dozo	Superintendent of State Taxes	Phek	8131916410
115	Shri Souvitho Nyusou	Inspector of State Taxes	Phek	986755826
116	Shri. T.E. Kisume Yimchunger	H.A	Phek	9862609526
117	Smti Anungba	UDA	Phek	9612135801
118	Smti Neisakhonuo	LDA	Phek	9856201908
119	Smti. Mirelo	LDA Contract	Phek	9774698227
120	Smti Zutsulo	Typist	Phek	9089870955
121	Shri Kekwengolo	Peon	Phek	8974267615
122	Shri Kedoutso	Chowkidar	Phek	90896022026
123	Shri Zonie	Sweeper	Phek	8974925739
124	Shri Kope Krono	Driver	Phek	96123674421
125	Shri. Devoto Venuh	Peon	Phek	9862799836
126	Shri. Atener Aier	Superintendent of State Taxes	Wokha	9612097040
127	Smti Viki Sumi	Inspector of State Taxes	Wokha	9615086796

128	Shri. T.Chunbemo Kikon	Inspector of State Taxes	Wokha	9089731542
129	Shri. Ngullie Aaron M. Mhonbemo	Inspector of State Taxes	Wokha	8826610318
130	Shri.L. Ashio Murry	H.A	Wokha	9612973150
131	Smt. Pfucukha-u Wetsah	U.D.A	Wokha	9612649244
132	Smti.D. Meribeni Patton	LDA Contract	Wokha	9615551660
133	Shri. Savi Koza	LDA Contract	Wokha	9856848641
134	Shri .W. Orenthung Tungoe	Typist	Wokha	9862938489
135	Shri C. Chumchamo Patton	Peon	Wokha	9862259355
136	Shri Ezanyimo Ngullie	Peon	Wokha	9436816132
137	Shri Lobeni Lotha	Sweeper	Wokha	9862538550
138	Smti. Zareni Lotha	Chowkidar	Wokha	94026439917
139	Smti. Chevitsu Nyuthe	Superintendent of State Taxes	Zunheboto	9436066620
140	Myingthungbemo Patton	Inspector of State Taxes	Zunheboto	9862028128
141	Mughabu Swu	Inspector of State Taxes	Zunheboto	8787535474
142	T. Yapangla	H.A.	Zunheboto	7005635879
143	Shri. Keneisetuo Ziekhru	U.D.A	Zunheboto	8837008064
144	Smti Gwachu Kagan	Typist	Zunheboto	9402432653
145	Toil Yeptho	LDA	Zunheboto	7005535255
146	Bendanglemla	LDA	Zunheboto	2402207843
147	Shri Kughaho Sema	Peon	Zunheboto	8730935784
148	Smti. S. Liho Sumi	Peon	Zunheboto	8575822590
149	Shri Kakheho Sema	Peon	Zunheboto	7005665461
150	Smti.Mugatoli Sumi	Chowkidar	Zunheboto	9089853125
151	Shri. K. Semato Sumi	Sweeper	Zunheboto	8787489946
152	Shri Y. Toshi Yimchunger	Superintendent of State Taxes	Mon	7005660663
153	Shri Kaktiba Sangtam	Inspector of State Taxes	Mon	8974663875
154	Shri. Taushie	Inspector of State Taxes	Mon	8612010167
155	Smti. M Tsuning	Inspector of State Taxes	Mon	9774248733
156	Smti.D. Apokla Lkr	H.A.	Mon	9436431013
157	Shri. Satminthang	UDA	Mon	9436431013
158	Shri. Ahon Konyak	LDA (Contract)	Mon	9862943275
159	Smti. Pamphe Konyak	LDA (Contract)	Mon	8366350643
160	Smti Linyu Konyak	Typist	Mon	8119848268
161	Shri.KhomgamKonyak	Chowkidar	Mon	8413985024
162	Smti. P Chingyah Konyak	Peon	Mon	8413829581
163	Smti. Yashirenla	Peon	Mon	8962386933
164	Shri. Longtha Phom	Office Peon	Mon	8413809555

656	Smti. Pongshum Konyak	Sweeper	Mon	7085899465
166	Smti Lirila Sangtam	Deputy Commissioner of State Taxes	Mokokchung	9436017204
167	Shri. Aowati	Superintendent of State Taxes	Mokokchung	9436006583
168	Smti.Chubanaro	Superintendent of State Taxes	Mokokchung	9862419377
169	Shri. Alemwabang	Inspector of State Taxes	Mokokchung	7005805561
170	Smti. Roselinda Longchar	Inspector of State Taxes	Mokokchung	8119840260
171	Smti. Yanthrongla Yimchunger	Inspector of State Taxes	Mokokchung	8414850420
172	Shri Bendangtems	Inspector of State Taxes	Zunheboto	7005423544
173	Shri. Seyiekhrielie Kuotsu	Inspector of State Taxes (Contract)	Mokokchung	9612509095
174	Shri. Pekuovotuo Angami	Inspector of State Taxes (Contract)	Mokokchung	9615148658
175	Smti. Akala Jamir	H.A	Mokokchung	9436607279
176	Smti Gloria Yanthan	UDA	Mokokchung	8414955298
177	Kmr Imtisenla	UDA	Mokokchung	8413053846
178	Shri.Lungyisappe	LDA (Contract)	Mokokchung	8974397171
179	Shri Imkum Pongener	L.D.A Contract	Mokokchung	8014086201
180	Shri Bendangkokba	L.D.A Contract	Mokokchung	9612539681
181	Shri. T.Temjen Jamir	Driver	Mokokchung	9612937222
182	Tsuktimongba	Driver	Mokokchung	8575421521
183	Shri Chuba Jamir	Office Peon	Mokokchung	9856967465
184	Smti. Sashimongla	Office Peon	Mokokchung	9089442543
185	Smti. Keweko Marhu	Office Peon	Mokokchung	8014824471
186	Shri. Chubangantet	Office Peon	Mokokchung	9612633792
187	Shri .Temjensowa	Chowkidar	Mokokchung	9856538389
188	Smti.Imlirenla	Sweeper	Mokokchung	8794974494
189	Shri. Bendangkumba Ao	Peon	Mokokchung	8131859271
190	Shri. O Among Sanglir	Peon	Mokokchung	9856189871
191	Shri Imosong Imsong	Deputy Commissioner of State Taxes	Dimapur	9402696695
192	Shri Jimyang Imlong	Superintendent of State Taxes	Dimapur	9436079834
193	Shri Zulutemsu	Superintendent of State Taxes	Dimapur	9436011101
194	Smti. Tokatoli Sohe	Superintendent of State Taxes	Dimapur	9436112514
195	Shri I.Mughato	Superintendent of State Taxes	Dimapur	9436002309
196	Shri.P.Muchu Khiamniungam	Superintendent of State Taxes	Dimapur	9436830155
197	Smti. Nitoli Sema	Superintendent of State Taxes	Dimapur	9615223847
198	Shri. Keyichetlube	Senior Inspector of State Taxes	Dimapur	9615101737
199	Shri. H.Nganwang Konyak	Sr. Inspector of State Taxes	Dimapur	9436609506
200	Shri B.Sangro Aier	Inspector of State Taxes	Dimapur	9436602972

201	Shri. E.Onshao Phom	Inspector of State Taxes	Dimapur	9862843216
202	Smti. Rongsenkala	Inspector of State Taxes	Dimapur	8974195915
203	Shri. Thomas Wilson	Sr. Inspector of State Taxes	Dimapur	9436660777
204	Smti. Mhabeni Lotha	Inspector of State Taxes	Dimapur	9615624697
204	Smti Ramsangla	Inspector of State Taxes	Dimapur	985647126
205	Smti. Moasangla	Inspector of State Taxes	Dimapur	9856040970
206	Smti. Richanaro	Inspector of State Taxes	Dimapur	9774001103
207	Smti. M. Chibeni Lotha	Inspector of State Taxes	Dimapur	8822085250
208	Shri. N. Irangsalung	Inspector of State Taxes	Dimapur	9862386235
209	Shri.Zulutumba	H.A. Sr.	Dimapur	7005957413
210	Shri. Kevikhrietuo Metha	UDA	Dimapur	9436804931
211	Shri. Bimomo Ovung	UDA	Dimapur	9862761759
212	Shri. Ripaliba	UDA	Dimapur	7085422312
213	Smti. Imtinochetla	UDA	Dimapur	9436013368
214	Shri. R. Temjem	UDA	Dimapur	9856845093
215	Smti. Themneiting	U.D.A.	Dimapur	9436261062
216	Smti.Kimnielhing Hangsingh	U.D.A	Dimapur	9436266063
217	Smti.Paunam Meru	U.D.A.	Dimapur	8014151276
218	Shri. Lanu Tsudir	U.D.A.	Dimapur	8794974539
219	Shri. T. Ademo Murry	U.D.A	Dimapur	8729998177
230	Shri. Jeange Yanlem	LDA	Dimapur	8974849080
231	Shri. Robin K. Rochill	LDA (Contract)	Dimapur	9862227406
232	Shri. Selu Tunyi	LDA (Contract)	Dimapur	7308528531
233	Smti. Tiajenla	LDA (Contract)	Dimapur	9436207999
234	Shri. Neivizolie Kense	LDA (Contract)	Dimapur	9856758798
235	Shri. Ikaho Aye	LDA (Contract)	Dimapur	9774691302
236	Shri. Imato Ayemi	LDA (Contract)	Dimapur	9774011750
237	Shri. Benedict Hamtsoe	LDA (Contract)	Dimapur	9862229890
238	Shri. Heshika Yepthomi	LDA (Contract)	Dimapur	8974155935
239	Shri. Atsusangba	LDA (Contract)	Dimapur	9089773588
240	Shri. Tekhengu-u Kezo	LDA (Contract)	Dimapur	8794546360
241	Shri. Buchong Lushing	LDA (Contract)	Dimapur	9612784363
242	Shri. Imtongchujang	LDA (Contract)	Dimapur	7085121035
243	Smti.S. Arepla	Typist	Dimapur	9436423143
244	Smti.Tozheli	Typist	Dimapur	9436266812
245	Shri Abemo	Peon	Dimapur	9436261056
246	Ruduovi Virie	Peon	Dimapur	9615623718
247	Shri. Sangbun	Peon	Dimapur	9856231714
248	Shri. Kedosetuo	Peon	Dimapur	9856213256

249	Shri. Razhusilie Visezuo	Peon	Dimapur	9774463280
250	Shri. C. Berithung Murry	Peon	Dimapur	9089990625
251	Shri. H.Winsha Konyak	Peon	Dimapur	9612371073
252	Shri. P. Tinglei Konyak	Peon	Dimapur	9862754815
253	Shri. Imnasungba	Peon	Dimapur	8974655504
254	Smti.Tarenjungla Sempo	Peon	Dimapur	8974795997
255	Shri. Alemla Longchar	Peon	Dimapur	9436821223
256	Shri Imlitoshi	Chowkidar	Dimapur	9856901068
257	Shri Moamonger	Mali	Dimapur	9862777455
258	Shri Phyophathung	Sweeper	Dimapur	
259	Shri Wati Lkr	Driver	Dimapur	9856284146
260	Shri Pauzan Zealing	Driver	Dimapur	8575498338
261	Shri Vikhonu Shiju	Driver	Dimapur	7085653402
262	Shri. Akato Zhimo	Driver	Dimapur	8575872530
263	Shri. Tito G. Aye	Driver	Dimapur	8415830020
264	Shri. Nokisangba	Driver	Dimapur	8356960046
265	Shri. Richard Achumi	Driver	Dimapur	8119024734
266	Mrs. N. Areni Patton	Deputy Commissioner of State Taxes	Kohima	7085169839
267	Smti. Orenponi	Superintendent of State Taxes	Kohima	9774574357
268	Smt. L.Yanbeni Humstoe	Superintendent of State Taxes	Kohima	9402809264
269	Shri Poshutho	Superintendent of State Taxes	Kohima	9856780808
270	Shri.Abeni Lotha	Sr.Inspector of State Taxes	Kohima	8794730802
271	Smti. Liisii	Inspector of State Taxes	Kohima	8794280127
272	Smti. Vinika Loho	Inspector of State Taxes	Kohima	9402014350
274	Shri. Vizayie Kar	Inspector of State Taxes	Kohima	9615201355
275	Smti. Sentikala Sanglir	Inspector of State Taxes	Kohima	9862193291
276	Shri. Merenkaba	Inspector of State Taxes	Kohima	9612166007
277	Shri. Zuthungbemo Ovung	Inspector of State Taxes	Kohima	9436216543
278	Shri. Rokovisie More	Inspector of State Taxes	Kohima	8730896952
279	Shri. Zulhipeu Meru	H.A.	Kohima	9436261443
280	Shri W. Henloi Phom	UDA	Kohima	9612836215
281	Shri. Mhaseyi	U.D.A	Kohima	9436210202
282	Smti. Wewule Thopi	U.D.A	Kohima	9436403489
283	Smti. Neibanuo	L.D.A	Kohima	9436000868
284	Smti. Alakunu Khieya	LDA (Contract)	Kohima	8974998276
285	Smti. Watisenla	LDA (Contract)	Kohima	9615936778
286	Smti.Lazonuo Kengurise	LDA (Contract)	Kohima	8119022994

287	Shri. Neihemia Nchang	LDA (Contract)	Kohima	9862182660
288	Shri. Neikemhiezo Mere	LDA (Contract)	Kohima	8258093272
289	Shri. Arangbe Meru	LDA (Contract)	Kohima	9402205249
290	Smt. Neilhou-u Metha	Typist	Kohima	8014895155
291	Smt. Medosenuo Richa	Typist	Kohima	9436604843
292	Smti.Kereilhou-u Rupreo	Typist	Kohima	9436601790
293	Shri. Khumbemo	Driver	Kohima	9615908412
294	Shri. Kiyekha	Driver	Kohima	9862743796
295	Shri. Nchanlo Kemp	Driver	Kohima	9856581582
296	Shri. Tepusatuo Kulnu	Driver	Kohima	8014847251
297	Shri. Mapo Konyak	Driver	Kohima	9621015683
298	Shri. Aotongpang	Driver	Kohima	7085270911
299	Shri. Kevizelie Venuh	Peon	Kohima	9856349422
300	Shri. Lhiwepre Lesuh	Peon	Kohima	9774422302 7985652734
301	Shri .Kito Temi	Peon	Kohima	7005089014
302	Shri. Zevilhoulie	Peon	Kohima	8575768670
303	Shri. Tez Bahadur	Peon	Kohima	9089842168
304	Smti. Kevitsono	Peon	Kohima	9856535649
305	Shri. Kekhrieneizo Matha	Chowkidar	Kohima	9856535649
306	Smti. Kevilhouü	Sweeper	Kohima	9615609793

List of Vehicles Under the Department of Taxes:

Sl. No	Name & Disignation of Officers	Vehicle Registration No.	Type of Vehicle	Drivers attached to Officers.
1	Kesonyu Yhome, IAS Commissioner of State Taxes	NL-10-9873	Hyundai/Creta	a) Solomon b) Prem Bahadur Chetri
2	Shri Mhathung Murry, Additional Commissioner of State Taxes -I	NL-10-C-0542	Scorpio	a) Tsanhungo Murry b) Jasper Imsong
3	Shri Wochamo Odyuo, Additional Commissioner of State Taxes-II	NL-10-C-0866	Scorpio	Orenthung Tsopoe
4	Smti Kilangnaro, Joint Commissioner of State Taxes Dimapur- I	NL-10-0522	Bolero	Suresh Thapa
5	Smti Imtilemla, Joint Commissioner of State Taxes Dimapur II	NL-10-0523	Bolero	Sashiyongdang
6	Shri C.Lima Imsong, Deputy Commissioner of State Taxes (HQ)	NL-10-C1120	Duster	Pauzen
7	Shri L. Shechong Konyak, Deputy Commissioner of State Taxes Dimapur (MS)	NL-10-C-0559	Bolero	Nnio Murry
8	Smti Areni Patton, Deputy Commissioner of	NL-10-9323	Scorpio	Nchenlo Kemp

	State Taxes Kohima			
9	Shri Imosong Imsong, Deputy Commissioner of State Taxes Dimapur	NL-10-9640	Bolero	Pranab Phonglo
10	Smti Lirila Sangtam, Deputy Commissioner of State Taxes Mokokchung	NL-10-9641	Bolero	T.Temjen Jamir
11	Smti. Nitoli Sema, Superintendent of State Taxes Dimapur	NL-10-8305	Bolero	Richard Achumi
12	Shri. Vekhozo Dozo, Superintendent of Taxes Dimapur	NL-10-7007	Gypsy King	Vikhonu Shijol
13	Smti Orenponi Yanthan, Superintendent of State Taxes Kohima	NL-10-9149	Xylo	Wati Longkumer
14	Shri. I.Mughato Aye, Superintendent of State Taxes Dimapur	NL-10-7321	Xylo	Roley Yeptho
15	Smti. Tokatoli Sohe, Superintendent of State Taxes Dimapur	NL-10-7701	Bolero	Akato Zhimomi
16	Shri. P. Muchu Khiarniungan, Superintendent of State Taxes Tuesang	NL-10-8306	Bolero	C. Sulim
17	Smti Chievitshu Nyuthe, Superintendent of State Taxes Dimapur	NL-108852	Scorpio	Nokisangba
18	Shri. Aowati Superintendent of State Taxes Kohima	NL-10-9638	Bolero	Kiyakha
19	Km. L.Yanbeni Humtsoe Superintendent of State Taxes Kohima	NL-10-3597	Omni Van	Khumbemo Lotha
20	Shri. Poshutho, Superintendent of State Taxes Kohima	NL-10-6158	Bolero	Tepusato Kulnu
21	Shri. Y.Chintuk Phom, Superintendent of Taxes Phek	NL-10-5316	Gypsy King	Kope Kronu
22	Shri. Jimyang Imlong, Superintendent of State Taxes Zunheboto	NL-10-8304	Bolero	Tito G. Aye
23	Shri. Bendangchuba, Superintendent of Taxes Dimapur (MS).	NL-10-7516	Bolero	
24	Shri. Zulutemsu, Superintendent of State Taxes Dimapur.	NL/10/C-0097	Gypsy	Tsuktimongba
25	Shri. Atener Aier, Superintendent of State Taxes Wokha.	NL/10/6924	Gypsy	
26	Shri.Y.Toshi Yimchunger, Superintendent of State Taxes Mon	NL/10/9624	Gypsy	
27	Smti. Chubanaro Superintendent of State Taxes Mokokchung.	NL-10-5316	Gypsy King	
28	Shri. Imlisanen, Computer Engineer	NL-10-8642	Bolero	
29	Shri. Sukdew Kumar Chetri, Sr. Steno cum P.S to Commr. of Taxes	NL-10-8854	Bolero	
30	OSD Revenue	NL-10-9710	Scorpio	Nath
31	Smti.Bodeno S. Colo, Joint Secretary	NL-10-C-0510	Bolero	

32	Directorate Pool	NL-10 81261	Scorpio	
33	Mobile Squad Pool	NL-104411	Omni Van	
34	Mobile Squad Pool	NL-10 5306	Gypsy	
35	Dimapur Unit Pool	NL-10 4291	Omni Van	
36	Directorate	U/R	TVS Sports Bike 2 Nos	
37	Dimapur Unit	U/R	TVS Sports Bike 3 Nos	
38	Kohima Unit	U/R	TVS Sports Bike 1 No.	
39	Mokokchung Unit	U/R	TVS Sports Bike 1 No.	

MANUAL-X

The monthly remuneration received by each of its officers and employees, including the system of compensation as provided in its regulations: Given in Annexure-I & II below:

ANNEXURE-I

Sl. No.	Designation	Group	Level /Pay Matrix	Rupees.
1	Commissioner of State Taxes	A	Level-17	Rs.102000-195500
2	Addl. Commissioner of State Taxes	A	Level-17	Rs.102000-195500
3	Joint Commissioner of State Taxes	A	Level-16	Rs.79900-193700
4	Deputy Commissioner of State Taxes	A	Level-15	Rs.67300-189000
5	Senior Superintendent of State Taxes	A	Level-14	Rs.57400-181600
6	Registrar	A	Level-14	Rs.57400-181600
7	Superintendent of State Taxes	A	Level-12	Rs.43700-138500
8	Senior Inspector of State Taxes	B	Level-11	Rs.40800-129200
9	Inspector of State Taxes	C	Level-8	Rs.28700-91300
10	Stenographer Gr.I	A	Level-14	Rs.57400-181600
11	Stenographer Gr.III	C	Level-7	Rs.26400-83600
12	Computer Engineer	B	Level-12	Rs.43700-138500
13	Office Superintendent(Dte)	A	Level-13	Rs.53100-177500
14	Asstt.Office Superintendent (Dte)	B	Level-11	Rs.40800-129200
15	Sr. H/A	B	Level-11	Rs.40800-129200
16	Head Asstt.*	C	Level-10	Rs.37800-119700
17	U.D.A. (Dte)	C	Level-8	Rs.28700-91300
18	U.D.A. (Dist)	C	Level-7	Rs.26400-83600
19	Sr. Driver	C	Level-6	Rs.25300-80500
20	Driver	C		Rs.18000-56900

21	L.D.A. (Dte)	C	Level-5	Rs.20500-65100
22	L.D.A. (Dist)	C	Level-4	Rs.19500-62000
23	Typist Grade -II	C	Level-5	Rs.20500-65100
24	Typist Gr.III	C	Level-4	Rs.19500-62000
25	Duftry	D	Level-2	Rs.16100-50900
26	Checker	D	Level-2	Rs.16100-50900
27	Sweeper	D	Level-2	Rs.16100-50900
28	Chowkidar	D	Level-1	Rs.15500-49400
29	Peon	D	Level-1	Rs.15500-49400
30	Mali	D	Level-1	Rs.15500-49400

ANNEXURE I

Manual-X

Monthly remuneration received by each of its officers and employees, including the system of compensation as provided in its regulation (as on 31st March, 2018) under the Taxation Department.

Sl. No.	Name	Father's Name	Gen-der (M/F)	Educational Qualification	Designation	Status	Date of Birth	Date of entry into Service/first appointment	Date of Appointment to the Present Post	Place of posting	Date of Retirement	Pay Matrix Level of Rs	Gross Salary
1	2	3	4	5	6	7	8	9	10	11	12	13	14
1	KesonyuYhome IAS		M	M.Sc.	Commissioner of State Taxes	Regular				Directorate		L-17 Rs.102000-195500	142672
2	Y.Mhathung Murry	M.Y.Lotha	M	MA	Addl. Commissioner of State Taxes (I)	Regular	3/3/1968	2/11/1995	3/16/2010	Directorate	3/3/2028	L-17 Rs.102000-195500	151964
3	WochamoOdyuo	Innio Odyuo	M	MA	Addl. Commissioner of State Taxes(II)	Regular	1/21/1964	11/6/1989	9/13/2013	Directorate	1/21/2024	L-17 Rs.102000-195500	127511
4	KilangnaroLongchar	Taka Longchar	F	BA	Joint Commissioner of State Taxes(I)	Regular	2/25/1963	6/18/1987	9/13/2013	Directorate	6/18/2022	L-16 Rs.79900-193700	102941
5	Imtilemla Lkr	Medangmayang	F	BA	Joint Commissioner of State Taxes(II)	Regular	1/19/1964	6/20/1987	7/11/2013	Dimapur	6/20/2022	L-16 Rs.79900-193700	100016
6	C.Lima Imsong	Lt I ChubawatiAo	M	BA	Dy. Commissioner of State Taxes(HQ)	Regular	8/14/1966	5/11/1993	9/13/2013	Directorate	8/14/2026	L-15 Rs.67300-189000	89369
7	Areni Patton	Nyimathung	F	BA	Dy. Commissioner of State Taxes	Regular	12/2/1970	1/4/1998	10/29/2014	Kohima	12/2/2030	L-15 Rs.67300-189000	78626
8	Imosong Imsong	Lt. Akangkokba	M	BA	Dy. Commissioner of State Taxes	Regular	3/1/1973	10/18/1998	11/30/2014	Dimapur	2/28/2033	L-15 Rs.67300-189000	84986
9	L.Shechong Konyak	M.Loy	M	BA	Dy. Commissioner of State Taxes	Regular	3/13/1966	11/1/1988	6/6/2014	Dimapur(MS)	11/1/2023	L-15 Rs.67300-189000	92060

10	Lirila Sangtam	Lt.Chiose Sangtam	F	BA	Dy. Commissioner of State Taxes	Regular	12/12/1972	12/20/1999	9/24/2012	Mokokchung	12/12/2032	L-15 Rs.67300-189000	60932
11	Bendangchuba	I.Petong Ao	M	BA	Supdt of State Taxes	Regular	1/22/1977	4/28/2003	9/13/2014	Dimapur(MS)	1/22/2037	L-12 Rs.43700-138500	58364
12	I.Mughato Aye	Lhovi Aye	M	BSc	Supdt of State Taxes	Regular	10/6/1972	11/8/2002	6/14/2013	Dimapur	10/6/2032	L-12 Rs.43700-138500	68122
13	Tokatoli Sohe	Nihoto Sohe	F	BA	Supdt of State Taxes	Regular	5/1/1978	6/19/2004	3/19/2013	Dimapur	5/31/2038	L-12 Rs.43700-138500	62354
14	Nitoli Sema	Nechoshe iSema	F	MA	Supdt of State Taxes	Regular	9/9/1974	7/11/2002	4/1/2010	Dimapur	9/9/2034	L-12 Rs.43700-138500	69596
15	Zulutemsu	Lt.Bendangwati	M	MA	Supdt of State Taxes	Regular	6/26/1976	3/14/2006	10/29/2014	Dimapur	6/26/2036	L-12 Rs.43700-138500	58819
16	P.Muchu Khiamniungan	Pokho	M	BA	Supdt of State Taxes	Regular	6/30/1975	1/27/2006	10/29/2014	Dimapur	6/30/2035	L-12 Rs.43700-138500	58819
17	Jimyang Imlong	Tojolmlong	M	BA	Supdt of State Taxes	Regular	08/12/1972	1/9/2004	9/25/2013	Dimapur	8/31/2039	L-12 Rs.43700-138500	60578
18	Orenponi Yangthan	Lt. P.A..Yanrthan	F	MA	Supdt of State Taxes	Regular	4/23/1976	7/11/2002	3/16/2010	Kohima	4/30/2036	L-12 Rs.43700-138500	69460
19	L. Yanbeni Humtsoe	Lumchio Humtsoe	F	MSc	Supdt of State Taxes	Regular	4/1/1977	1/2/2004	10/29/2014	Kohima	4/30/2037	L-12 Rs.43700-138500	61874
20	Poshutho	Lt.Kezhalehou	M	BSc	Supdt of State Taxes	Regular	1/3/1978	2/1/2006	9/26/2014	Kohima	1/31/2038	L-12 Rs.43700-138500	54428
21	Chubanaro	Lt. Watimeren	F	MA	Supdt of State Taxes	Regular	12/10/1978	1/15/2008	03/01/2017	Mokokchung	12/10/2038	L-12 Rs.43700-138500	40315
22	Aowati	TekotobaLkr	M	BA	Supdt of State Taxes	Regular	6/3/1965	2/1//1996	6/2//2014	Mokokchung	3/6/2026	L-12 Rs.43700-138500	52217
23	ToshiYimchunger	Yimkiumong	M	BA	Supdt of State Taxes	Regular	2/28/1979	7/11/2002	6/16/2013	Mon	11/30/2037	L-12 Rs.43700-138500	67607
24	Y.Chingtuk Phom	F.Yongshem Phom	M	MA	Supdt of State Taxes	Regular	12/1/1979	1/27/2006	10/29/2014	Tuensang	1/27/2041	L-12 Rs.43700-138500	56726
25	Vekhozo Dozo	Sevotso Dozo	M	BA	Supdt of State Taxes	Regular	10/6/1977	11/7/2002	6/14/2013	Phek	10/6/2037	L-12 Rs.43700-138500	69596
26	Atener Aier	Imtiwapang Aier	M	MSc	Supdt of State Taxes	Regular	10/10/1979	11/3/2006	11/3/2014	Wokha	10/31/2039	L-12 Rs.43700-138500	58364
27	Chievitshu Nyuthe	Rhuthozu	F	MA	Supdt of State Taxes	Regular	08/20/1976	11/05/2002	04/01/2010	Zunheboto	08/31/2036	L-12 Rs.43700-138500	69600
28	Imlisanen	Walter Longchar	M	B.E in Elect. & Comm.	Programme Officer	Regular	8/27/1983	6/2/2009		Directorate	8/27/2043	L-12 Rs.43700-138500	67607
29	Keyichetlube	Nsauging Pame	M	MA	Sr.Inspector of Taxes	Regular	4/2/1980	5/2/2009	5/1/2014	Dimapur	4/30/2040	L-11 Rs.40800-129200	40315
30	M.Chibeni Lotha	Mhathung	F	MA	Sr.Inspector of Taxes	Regular	4/4/1983	12/7/2010	12/11/2015	Dimapur	4/30/2043	L-11 Rs.40800-129200	51848
31	Moasenla	Talitemjen	F	MA	Sr.Inspector of Taxes	Regular	6/21/1980	12/7/2010	12/8/2015	Dimapur	6/30/2040	L-11 Rs.40800-129200	51848
32	Ongshau Phom	P.Elung Phom	M	MSc	Sr.Inspector of Taxes	Regular	4/16/1982	11/22/2011	25/04/2011	Dimapur	4/30/2042	L-11 Rs.40800-129200	51848
33	Remasangla	T.Mayang Jamir	F	BE	Sr.Inspector of Taxes	Regular	3/21/1982	1/21/2010	25/04/2011	Dimapur	1/31/2045	L-11 Rs.40800-129200	51848
34	Rongsenkala	Kilensowa	F	MA	Sr.Inspector of Taxes	Regular	08/07/1977	25/04/2011		Dimapur	7/31/2037	L-11 Rs.40800-129200	51848
35	Thomas WilsonYimchunger	T.C.Chuba	M	BA	Sr.Inspector of Taxes	Regular	3/23/1984	5/4/2009	5/1/2014	Dimapur	3/31/2044	L-11 Rs.40800-129200	40315
36	MhabeniLotha	E.NrioEzung	F	MA	Inspector of Taxes	Regular	25/02/1983	01/07/2014	01/07/2014	Dimapur	2/30/2044	L-8 Rs.28700-91300	38893
37	H. Ngamwang	Honying	M	BA	Sr. Inspector of Taxes	Regular	4/25/1973	5/6/1992	6/22/2012	Dimapur	6/30/2027	L-11 Rs.40800-129200	41054
38	Rechanaro Imchen	Toshilmchen	F	MSc	Sr.Inspector of Taxes	Regular	24/04/1983	06/09/2013	06/09/2013	Dimapur	4/30/2043	L-11 Rs.40800-129200	42429

39	N. Irangsalung	N. Koping	M	BA	Inspector of Taxes	Regular	02/04/1984	21/10/2016	21/10/2016	Dimapur	4/30/2044	L-8 Rs.28700-91300	38893
40	B. Sangro Aier	L. Bandangwabang Aier	M	BA. (LLB)	Sr.Inspector of Taxes	Regular	4/9/1977	8/20/2013		Dimapur	4/9/2037	L-11 Rs.40800-129200	45962
41	Elika Swu	Lt. LitoSwu	F	MA	Inspector of Taxes	Regular	10/19/1985	6/27/2014		Dimapur MS	10/19/2045	L-8 Rs.28700-91300	36007
42	Liyngbeni Kikon	Tsenyimo Kikon	F	MA	Inspector of Taxes	Regular	1/14/1985	6/27/2014		Dimapur MS	1/14/2045	L-8 Rs.28700-91300	38591
43	Langphong Wanmai	Nyamnyei Konyak	M	MSc	Inspector of Taxes	Regular	2/24/1982	6/27/2014		Dimapur MS	2/24/2042	L-8 Rs.28700-91300	38591
44	Merenchuba	Lanusashi	M	BA	Sr. Inspector of Taxes	Regular	7/3/1981	1/15/2008	1/15/2013	Dimapur MS	7/3/2041	L-11 Rs.40800-129200	54503
45	Yanrenthang Yanthang	M.Yantha	M	MSc	Sr. Inspector of Taxes	Regular	7/3/1983	4/5/2009	5/1/2014	Dimapur MS	7/3/2043	L-11 Rs.40800-129200	52982
46	Rokovisie Mor		M	MA	Inspector of Taxes	Regular	6/7/1981	10/21/2016		Kohima	6/10/2041	L-8 Rs.28700-91300	37538
47	LiisiiThurr	R.Atathu	F	MSc	Inspector of Taxes	Regular	4/20/1985	12/13/2007	8/10/2012	Kohima	12/31/2042	L-8 Rs.28700-91300	48770
48	Abeni Lotha	Chibosao	F	MSc	Sr.Inspector of Taxes	Regular	11/1/1981	2/5/2009		Kohima	11/30/2041	L-11 Rs.40800-129200	49414
49	Vinika Holo	Kupushe	F	M.Sc	Inspector of Taxes	Regular	8/11/1984	3/23/2013	10/21/2016	Kohima	8/31/2044	L-8 Rs.28700-91300	45962
50	Vizayie Kar	Vilakhozo Kar	M	Bsc	Inspector of Taxes	Regular	9/29/1992	10/21/2016		Kohima	10/21/2051	L-8 Rs.28700-91300	37538
51	Sentikala Sanlir	MeyiSanlir	F	MA	Inspector of Taxes	Regular	10/11/1984	10/21/2016		Kohima	10/31/2044	L-8 Rs.28700-91300	37538
52	Merengkaba	Lt. Purokaba	M	MA	Inspector of Taxes	Regular	6/7/1981	10/21/2016		Kohima	6/10/2041	L-8 Rs.28700-91300	45962
53	Zuthungbemo Ovung	A.Y.Ovung	M	BE	Inspector of Taxes	Regular	3/28/1985	10/21/2016		Kohima	3/31/2045	L-8 Rs.28700-91300	37538
54	Roselinda Longchar	P. Chubawati	F	BA	Inspector of Taxes	Regular	7/2/1986	6/27/2014		Mokokchung	7/2/2046	L-8 Rs.28700-91300	37299
55	Alemwabang Ozukum	Supongiba	M	BA	Sr.Inspector of Taxes	Regular	2/28/1977	11/21/2006		Mokokchung	2/28/2037	L-8 Rs.28700-91300	39559
56	Bendungtemsu	Tanghiu	M	B.Sc	Inspector of Taxes	Regular	10/14/1986	7/1/2014		Mokokchung	10/31/2046	L-8 Rs.28700-91300	36282
57	Vikavi Z Assumi	Zheito.G.Assumi	M	BA	Inspector of Taxes	Regular	20/08/1990	31/01/2019		Mokokchung	31/01/2050	L-8 Rs.28700-91300	46313
58	Lanurenla I.Imsong	T.Imkong Ao	F	B.Sc	Inspector of Taxes	Regular	9/11/1986	31/01/2019		Mokokchung	9/11/2046	L-8 Rs.28700-91300	34879
59	Yenthongla Yimchunger	MurelimYimchunger	F	M.Sc.	Inspector of Taxes	Regular	12/10/1990	12/10/2016		Mokokchung	12/10/2050	L-8 Rs.28700-91300	34248
60	Seyiekhrielie Kuotsu	Razuovuolie Kuotsu	M	BA	Inspector of Taxes	Contract	22/05/1985	17-07-2009		Mokokchung	3/9/2045	L-8 Rs.28700-91300	30828
61	Pekuovotuo Angami	D.P. Angami	M	M.A	Inspector of Taxes	Contract	09/11/1982	17-07-2009		Mokokchung	6/10/2042	L-8 Rs.28700-91300	30828
62	Thsidilong	Chamose	M	BA	Inspector of Taxes	Regular	07/03/1983	10/21/2016		Tuensang	10/31/2043	L-8 Rs.28700-91300	37538
63	Boska K Yeputhomi	K. KughazheYeputhomi	M	BE	Inspector of Taxes	Regular	5/7/1986	10/21/2016		Tuensang	10/31/2046	L-8 Rs.28700-91300	37538
64	I. Imsejungla	C. Inden	F	BSc	Inspector of Taxes	Regular	7/27/1982	6/26/2014		Tuensang	7/31/2042	L-8 Rs.28700-91300	38591
65	Kekhrieselie Khezhe	ViwelieKhezhe	M	BA	Inspector of Taxes	Contract	11/24/1983	11/6/2013		Tuensang	11/24/2043	L-8 Rs.28700-91300	33863
66	Kokdiba Sangtam	N.T. Meren Sangtam	M	MA	Inspector of Taxes	Regular	2/12/1982	5/9/2012		Mon	2/12/2042	L-8 Rs.28700-91300	42218
67	Taushie	H.Benchem	M	B A	Inspector of Taxes	Regular	11/18/1992	10/21/2016		Mon	10/31/2051	L-8 Rs.28700-91300	36485

68	M.Tsuwing	Mongo Khamniungan	F	M.Sc	Inspector of Taxes	Regular	16/11/1993	31/01/2019		Mon	01/31/2054	L-8 Rs.28700-91300	34879
69	Myingthunbemo Patton	Joseph Patton	M	MA	Inspector of Taxes	Regular	08/30/1990	10/21/2016		Zunheboto	10/31/2051	L-8 Rs.28700-91300	37540
70	Mughapu Swu	Kahuto Swu	M	B.Tech(IT)	Inspector of Taxes	Regular	21/08/1992	31/01/2019		Zunheboto			34879
71	Souvitho Nyusou	Sutsutho	M	Ph.d	Inspector of Taxes	Regular	10/30/1981	10/21/2016		Phek	10/21/2051	L-8 Rs.28700-91300	36485
72	Elinyilou Thopi	Kewekhalo Thopi	F	MA	Inspector of Taxes	Regular	28/02/1992	31/01/2019		Phek			34879
73	T. Chambemo Kikon	Thungmomo Kikon	M	MA	Inspector of Taxes	Regular	11/18/1988	10/21/2016		Wokha	10/31/2046	L-8 Rs.28700-91300	37538
74	Ngullie Aaron M Mhonbemo	M.Mhonbemo Ngullie	M	BA	Inspector of Taxes	Regular	18/03/1992	31/01/2019		Wokha		L-8 Rs.28700-91300	34379
75	Viki Sumi	Ghoshito Sumi	F	BA	Inspector of Taxes	Regular	9/13/1990	7/2/2014		Dimapur	4/31/2049	L-8 Rs.28700-91300	38893
76	Zulutemba	Lt.Tsuktirenba	M	B.Com	Sr.Head Assistant	Regular	2/15/1964	2/2/1989	5/3/2013	Dimapur	2/28/2024	L-11 Rs.40800-129200	76234
77	NzanbemoLotha	Shenjamo Lotha	M	Matriculate	Head Assistant.	Regular	2/25/1963	9/27/1985	1/22/2016	Tuensang	9/30/2020	L-10 Rs.37800-119700	56843
78	Zulhipeu Mero	Lt.K.Mero	M	Matriculate	Head Assistant.	Regular	5/2/1963	10/1/1985	3/17/2017	Wokha	9/30/2020	L-10 Rs.37800-119700	58481
79	T.Yapangla	Toshi	F	P U	Head Assistant.	Regular	10/24/1965	01/01/1987	02/28/2017	Zunheboto	12/31/2021	L-10 Rs.37800-119700	58540
80	D.Apokla	Wapanglemba	F	Matriculate	Head Assistant.	Regular	12/2/1966	7/13/1987	18/04/2018	Mon	7/31/2022	L-10 Rs.37800-119700	51695
81	Akala Jamir	Kilanok	F	Undermatric	Head Assistant.	Regular	4/11/1972	12/11/1999	18/04/2018	Mokokchung	4/11/2032	L-10 Rs.37800-119700	49955
82	Ashio L. Murry	Lumben Murry	M	Matriculate	Head Assistant.	Regular	8/14/1963	2/1/1987	18/04/2018	Wokha	2/1/2022	L-10 Rs.37800-119700	50876
83	T.E Kisume	Lt.Tsakiu	M	PU	Head Assistant.	Regular	4/8/1965	10/6/1987	20/04/2018	Phek	10/6/2022	L-10 Rs.37800-119700	69596
84	Vingulie Mepfhuo	Ngulho	M	MA	UDA (Directorate)	Regular	3/14/1979	1/14/2009	8/1/2014	Directorate		L-8 Rs.28700-91300	36485
85	MhabemoOvung	N.Ekyimsao Ovoung	M	BA	UDA (Directorate)	Regular	9/20/1971	1/8/2000		Directorate	9/20/2031	L-8 Rs.28700-91300	43388
86	Flora T.Patton	Lt.James M. Patton	F	BA	UDA (Directorate)	Regular	3/11/1984	5/24/2011		Directorate	3/11/2044	L-8 Rs.28700-91300	34045
87	Imtinochetla	Kipentemjen	F	PU	UDA (District)	Regular	1/10/1974	4/21/1994	9/5/2014	Dimapur	4/30/2029	L-7 Rs.26400-83600	46438
88	Themneiting	Khunkholal	F	PU	UDA (District)	Regular	8/22/1981	11/29/2004	1/13/2016	Dimapur	11/30/2039	L-7 Rs.26400-83600	35302
89	Kiminielhing	Ngulkhosei Hansing	F	BA	UDA (District)	Regular	11/11/1975	1/24/2005	11/2/2016	Dimapur	11/30/2035	L-7 Rs.26400-83600	37945
90	LanuTsudir	ImtiTzudir	M	P.U. Com	UDA (District)	Regular	10/14/1983	1/25/2004	7/8/2016	Dimapur	30/1/2040	L-7 Rs.26400-83600	37945
91	RipalibaAo	Tekayaba	M	Matriculate	UDA (District)	Regular	5/16/1962	9/8/1992	10/7/2014	Dimapur	2/28/2022	L-7 Rs.26400-83600	47840
92	R.Temjen Ozukumer	Rendeshiba	M	Matriculate	UDA (District)	Regular	12/22/1964	9/8/1992	8/2/2014	Dimapur	12/31/2024	L-7 Rs.26400-83600	45134
93	Kevikhrietuo Metha	LhouslieMetha	M	PU	UDA (District)	Regular	12/17/1980	5/9/2005	26/04/2017	Dimapur	5/9/2040	L-7 Rs.26400-83600	37880
94	Paunam Meru	Hekimding	F	PUCOM	UDA (District)	Regular	3/16/1977	9/2/2005	28/11/2017	Dimapur	3/31//2037	L-7 Rs.26400-83600	35734
95	Ademo T Murry	Tsumongo Murry	M	MA	UDA (District)	Regular	12/22/1981	3/29/2011	2018	Dimapur	12/51/2041	L-7 Rs.26400-83600	
96	BimomoOvung	NirbemoOvung	M	PU	UDA (District)	Regular	6/4/1971	9/1/1900	7/8/2014	Dimapur	9/30/1935	L-7 Rs.26400-83600	42547
97	W.Henloi Phom	Wongnyie	M	Undermatric	UDA (District)	Regular	10/6/1969	11/6/1982	2/8/2014	Kohima	11/30/2024	L-7 Rs.26400-83600	48215
98	Mhaseyi Lohe	Lt.TutseyiLohe	M	BA	UDA (District)	Regular	7/12/1979	10/18/2004	1/21/2016	Kohima	8/31/2039	L-7 Rs.26400-83600	37655
99	Wewelu Thopi	Lt.Wezulhilo	F	BA	UDA (District)	Regular	7/27/1981	2/6/2008	30/4/2018	Kohima	7/31/2041	L-7 Rs.26400-83600	34496
100	Chumbeni Murry	Jibomo	F	MA	UDA (District)	Regular	1/8/1975	4/2/2008	30/4/2018	Dimapur MS	1/8/2035	L-7 Rs.26400-83600	34496

101	Nchumbemo Ovung	Tsemomo	M	Matriculate	UDA (District)	Regular	5/2/1967	1/2/1988	2/11/2014	Dimapur MS	1/2/2023	L-7 Rs.26400-83600	43505
102	Satminthang Guite	Lalkhoshe Guite	M	BA	UDA (District)	Regular	10/2/1983	6/9/2005	26/04/2017	Mon	6/9/2040	L-7 Rs.26400-83600	37772
103	Gloria Yanthang	Lt.J.T.Yanthan	F	BA	UDA (District)	Regular	4/11/1972	12/11/1999	2/11/2014	Mokokchung	4/11/2032	L-7 Rs.26400-83600	37970
104	Imtisenla Jamir	Lt.Toshi Jamir	F	BA	UDA (District)	Regular	6/27/1972	2/19/2002	2/11/2015	Mokokchung	6/30/2032	L-7 Rs.26400-83600	29342
105	AnungbaAo	Lt. Asangba Ao	M	Matriculate	UDA (District)	Regular	1/1/1972	2/11/2015	30/9/2019	Phek	10/1/2029	L-7 Rs.26400-83600	48887
106	Pfucukha-uWetsah	Lt.Meselo Wetsah	F	BA	UDA (District)	Regular	9/27/1978	2/9/2005	28/11/2017	Wokha	9/30/2038	L-7 Rs.26400-83600	33173
107	S. Rangsingba Sangtam	Sedopng	M	BA	UDA (District)	Regular	6/27/1982	3/29/2011	02/04/2018	Tuensang	6/30/2042	L-7 Rs.26400-83600	32624
108	Keneisetuo Ziekhru	Lt.Neothon	M	PU	UDA (District)	Regular	08/10/1982	01/25/2005	07/22/2016	Zunheboto	12/31/2040	L-7 Rs.26400-83600	36600
109	Eunich	Hotoshe Yeptho	F	M.C.A	LDA (Directorate)	Contract	11/13/1981	11/14/2014		Directorate	11/13/2041	L-5Rs.20500-65100	22201
110	Veseilhou Chupuo	Neilatuo	M	MA	LDA (Directorate)	Contract	4/24/1989	3/1/2016		Directorate	4/30/2049	L-5Rs.20500-65100	20937
111	Shime Jamir	Y.Puti Jamir	M	BA	LDA (Directorate)	Contract	6/20/1981	1/1/1900		Directorate	1/1/1935	L-5Rs.20500-65100	22872
112	Subongmeren	Samanungsang	M	MA	LDA (Directorate)	Contract	1/27/1985	11/14/2014		Directorate	1/27/2045	L-5Rs.20500-65100	22201
113	Zuchano Kikon	R.John	F	MA	LDA (Directorate)	Contract	1/16/1984	1/1/1900		Directorate	1/1/1935	L-5Rs.20500-65100	22872
114	Wingambo	Aritnbo Rentta	M	BA	LDA (Directorate)	Contract	2/14/1992	2/4/2015		Directorate	2/4/2050	L-5Rs.20500-65100	22201
115	Nikmenmenla	Wabang Changkiri	F	BA	LDA (Directorate)	Contract	07/12/1992	29/04/2015		Directorate	2/4/2050	L-5Rs.20500-65100	22201
116	Zasivillie Chase	Lt.Neikosalhou	M	BA	Analyst	Regular	4/20/1977	9/7/2005		Directorate	4/20/2037	L-5Rs.20500-65100	34699
117	M.JeangeYanlem	W.Manpong	M	BA	LDA (District.)	Regular	9/22/1976	6/1/2011		Dimapur	9/20/2036	L-4 Rs.19500-62000	30757
118	Atsusangba	Imtitemoa	M	Tech. Grad	LDA (District.)	Contract	7/8/1988	5/1/2015		Dimapur	7/31/2048	L-4 Rs.19500-62000	19956
119	NeivizolieKense	Neisielie	M	B. A	LDA (District.)	Contract	11/10/1987	6/4/2014		Dimapur	7/31/2048	L-4 Rs.19500-62000	19956
120	HeshekaYepthomi	Lt.Yekhuhe	M	MA	LDA (District.)	Contract	7/15/1987	11/14/2014		Dimapur	7/31/2047	L-4 Rs.19500-62000	19956
121	Ikaho Aye	Shikato Aye	M	BA	LDA (District.)	Contract	3/25/1987	5/29/2014		Dimapur	3/31/2047	L-4 Rs.19500-62000	19956
122	ImatoAyemi	Puhito Ayemi	M	MA	LDA (District.)	Contract	2/23/1987	5/29/2014		Dimapur	2/28/2047	L-4 Rs.19500-62000	19956
123	K.RobinRochill	Khetoi Rochill	M	BA	LDA (District.)	Contract	9/18/1986	11/2/2014		Dimapur	9/30/2046	L-4 Rs.19500-62000	19956
124	BeneditT.Humtsoe	Thungchamo	M	BA	LDA (District.)	Contract	3/18/1988	6/1/2014		Dimapur	3/31/2048	L-4 Rs.19500-62000	19956
125	Tekhengu-u Koza	Neikhretso	M	BA	LDA (District.)	Contract	1/8/1985	5/1/2015		Dimapur	1/31/2045	L-4 Rs.19500-62000	19956
126	S.BuchongLushing	Shingnyu	M	MA	LDA (District.)	Contract	8/12/1984	5/2/2015		Dimapur	8/31/2044	L-4 Rs.19500-62000	19956
127	Tiajenla	K. Chuba	F	MA	LDA (District.)	Contract	8/2/1982	11/14/2014		Dimapur	8/31/2042	L-4 Rs.19500-62000	19956
128	SeluTunyi	NetsozuTunyi	F	BA	LDA (District.)	Contract	4/3/1989	11/24/2016		Dimapur	4/30/2049	L-4 Rs.19500-62000	19956
129	Wabangmenla	Lt. Korapang	F	Jndermatric	LDA (District.)	Regular	3/3/1965	3/7/1987		Dimapur MS	3/7/2022	L-4 Rs.19500-62000	45845
130	KezhangulieKire	Pulhou Kire	M	BA	LDA (Dist.)	Contract	7/18/1982	5/17/2014		Dimapur MS	7/18/2042	L-4 Rs.19500-62000	21169
131	InotoliSema	Lt. Assumi	F	BA	LDA (Dist.)	Contract	5/14/1985	5/17/2014		Dimapur MS	5/14/2045	L-4 Rs.19500-62000	21814
132	IrangteingHemang	Pausuiheing	M	B.C.A	LDA (Dist.)	Contract	11/10/1984	4/30/2015		Dimapur MS	11/10/2044	L-4 Rs.19500-62000	21169
133	VikatoYepthomi	Khenito	M	MA	LDA (Dist.)	Contract	12/23/1988	4/28/2015		Dimapur MS	12/23/2048	L-4 Rs.19500-62000	21169

134	NisheliAwomi	Lt.Shiyito Awomi	F	BA	LDA (Dist.)	Contract	28/08/1987	5/17/2014		Dimapur MS	5/14/2045	L-4 Rs.19500-62000	21814
135	Albert Mero	Zumolhi	M	BA	LDA (Dist.)	Contract	02/05/1988	16/11/2016		Dimapur MS		L-4 Rs.19500-62000	19956
136	SeveKoza		M	BA	LDA (Dist.)	Contract		16/11/2016		Dimapur MS		L-4 Rs.19500-62000	19956
137	SakumongbaLongchar	Imsenmeren Lonchar	M	BA	LDA (Dist.)	Contract	01/02/1987	28/05/2017		Dimapur MS		L-4 Rs.19500-62000	19956
138	Watimeren	Longertemjem	M		LDA (Dist.)	Contract	04/01/1991	28/05/2017		Dimapur MS		L-4 Rs.19500-62000	19956
139	Arungbe Meru	Ngulie Meru	M	BA	LDA (Dist.)	Contract	1/8/1986	11/13/2014		Kohima	1/8/2046	L-4 Rs.19500-62000	19956
140	AlakunuKhieya	Punose	F	M.Com	LDA (Dist.)	Contract	5/8/1988	5/19/2014		Kohima	8/5/2048	L-4 Rs.19500-62000	19956
141	LazonuoKengursie	Reiliezh	F	MA	LDA (Dist.)	Contract	12/7/1987	7/7/2014		Kohima	7/2/2047	L-4 Rs.19500-62000	19956
142	Neikemhiezo Mere	Viyalie Mere	M	BA	LDA (Dist.)	Contract	6/22/1993	11/13/2014		Kohima	11/13/2049	L-4 Rs.19500-62000	19956
143	Nehemiah Nchang	Puadabo Nchang	M	M A	LDA (Dist.)	Contract	7/24/1984	7/7/2014		Kohima	7/24/2044	L-4 Rs.19500-62000	19956
144	Watisenla	Inonenba	F	BA	LDA (Dist.)	Contract	1/19/1982	5/19/2014		Kohima	1/19/2042	L-4 Rs.19500-62000	19956
145	CheteuLosou	Senokha Losuo	M	M A	LDA (Dist.)	Contract	6/11/1990	11/19/2016		Kohima		L-4 Rs.19500-62000	19956
146	Neibanuo	Lt.K.Angami	F	Undermatic	LDA (Dist.)	Regular	10/5/1965	7/17/1987		Kohima	7/31/2022	L-4 Rs.19500-62000	44558
147	Bendangkokba	Yashikaba	F	BA	LDA (Dist.)	Contract	1/19/1982	6/6/2014		Mokokchung	1/19/2042	L-4 Rs.19500-62000	20445
148	ImkumPonger	Nokchameren	M	BA	LDA (Dist.)	Contract	3/28/1983	12/16/4014		Mokokchung	3/28/2043	L-4 Rs.19500-62000	21067
149	Lungyisappe	Hialing	M	BA	LDA (Dist.)	Contract	06/06/1990	18/06/2015		Mokokchung	3/10/2050	L-4 Rs.19500-62000	21067
150	Ahom T Konyak	Noke Konyak	M	BA	LDA (Dist.)	Contract	10/03/1983	13/11/2014		Mon	3/10/2043	L-4 Rs.19500-62000	21169
151	Phangphe Konyak	Angam Konyak	F	BA	LDA (Dist.)	Contract	11/01/1984	28/05/2017		Mon		L-4 Rs.19500-62000	38366
152	Merilo	Lt. Nchibemo	F	PU	LDA (Dist.)	Contract	2/13/1984	6/20/2015		Phek	6/30/2056	L-4 Rs.19500-62000	19956
153	Neisakhono	KodolhouRitse	F	B.A	LDA (Dist.)	Regular	8/2/1975	5/12/2011		Phek	5/31/2046	L-4 Rs.19500-62000	29699
154	PesingKhamniungan	Mongtsoa	M	BA	LDA (Dist.)	Contract	8/3/1984	6/13/2014		Tuensang	6/30/2049	L-4 Rs.19500-62000	23130
155	LikhumseSangtam	Lt. Tsalito Sangtam	M	BA	LDA (Dist.)	Regular	7/26/1990	11/2/2013		Tuensang	11/30/2048	L-4 Rs.19500-62000	28061
156	Meribeni Patton	N.Danil Patton	F	MA	LDA (Dist.)	Contract	3/31/1984	4/30/2015		Wokha	3/31/2044	L-4 Rs.19500-62000	20550
157	SaviKoza	Khape Koza	M	MA	LDA (Dist.)	Contract	5/7/1983	11/28/2016		Wokha	11/31/2045	L-4 Rs.19500-62000	
158	Toil Yeptho	Keyito	F	M A	LDA (Dist.)	Contract	12/13/1992	6/2/2016		Zunheboto		L-4 Rs.19500-62000	20941
159	Bendanglemla	Wati Sangtam	F	CI-12	LDA (Dist.)	Contract	10/28/1982	18/16/2016		Zunheboto		L-4 Rs.19500-62000	20941
160	Mesue	Dichelo	F	BA	LDA	Fixed	1/1/1900	11/5/2014		Dimapur	1/1/1960	3400	3400
161	Sukdew Kumar Chetri	Lt.Dil Bahadur Chetri	M		Sr. Stenographer Gr.IISr	Regular	8/8/1965	8/8/1986		Directorate	8/8/2021	L-14Rs.57400-181600	82934
162	ImtilanglaLongkumer	Lt.RendinungsangLkr	F		Stenographer Gr.III	Regular	4/25/1989	4/2/2015		Directorate	4/25/2049	L-7 Rs.26400-83600	37655
163	Tsuknungrenla	Chujhung Imchen	F		Stenographer Gr.III	Regular				Directorate		L-7 Rs.26400-83600	34496
164	Rongpangmeren	Rongsensowa	M	Matriculate	Stenographer Gr.III	Regular	10/24/1972	7/30/1993		Directorate	7/30/2028	L-7 Rs.26400-83600	55845
165	BamzeuLigiese	K.Zeliang	F	Matriculate	Typist Gr.I	Regular	12/25/1969	10/21/1995		Directorate	12/25/2029	L-5 Rs.20500-65100	45611

166	Vitoungu-u Chase	Lt.Neikosalhou	F	Matriculate	Typist Gr.II	Regular	2/1/1976	1/19/2001		Directorate	1/19/2036	L-5 Rs.20500-65100	38187
167	Bendangkokla	Nungsangkaba	F	Undermatrc	Typist Gr.III	Regular	6/3/1970	5/14/1990		Directorate	5/14/2025	L-5 Rs.20500-65100	41566
168	GwachuKajan	Kema	M	Undermatric	Typist Gr.III	Regular	02/20/1967	08/10/1988		Zunheboto	8/31/2023	L-5 Rs.20500-65100	44570
169	Tozheli	Pekiye	F	Undermatric	Typist Gr.III	Regular	2/6/1969	8/30/1988		Dimapur	8/31/2023	L-5 Rs.20500-65100	47266
170	S.Arepla	Pangjung	F	Undermatric	Typist Gr.III	Regular	5/15/1966	10/11/2011		Dimapur	10/31/2023	L-5 Rs.20500-65100	45107
171	LinyuKonyak	Kaiphong	F	Undermatric	Typist Gr.III	Regular	3/4/1976	11/1/2001		Mon	11/30/2036	L-5 Rs.20500-65100	22459
172	Kereilhou-u Rupreo	Lt. Duorhielie	F	Undermatric	Typist Gr.III	Regular	4/1/1969	12/11/1995	5/1/2014	Kohima	4/30/2029	L-5 Rs.20500-65100	41566
173	MedosenuoRicha	Lt.Koshu	F	Undermatric	Typist Gr.III	Regular	1/30/1971	7/18/1994	5/1/2014	Kohima	7/31/2029	L-5 Rs.20500-65100	40149
174	NeilhoiiMetha	Lt.Yachuvi	F	Undermatric	Typist Gr.III	Regular	11/28/1967	8/29/1988		Kohima	8/31/2023	L-5 Rs.20500-65100	41750
175	Orenthung W Tungoe	WonimoTungoe	M	Undermatric	Typist Gr.III	Regular	6/18/1976	8/1/2000		Wokha	7/31/2035	L-5 Rs.20500-65100	42101
176	T. Chimkila	Tsuntruba	F	Undermatric	Typist Gr.III	Regular	6/25/1964	7/22/1988		Tuensang	7/31/2023	L-5Rs.20500-65100	46898
177	Zutsolo-u	Chitsolo	F	Matriculate	Typist Gr.III	Regular	03/22/1960	09/18/1988		Phek	03/22/2020	L-5 Rs.20500-65100	45611
178	Solomon	Kholi	M	CI-VI	Driver Gr.II	Regular	3/15/1972	11/9/1997		Directorate	3/15/2032	L-6 Rs.25300-80500	40258
179	PranabPhonglo	Lt.Devalsingh Phonlo	M	CI-IX	Driver Gr.II	Regular	1/5/1966	1/7/1987		Directorate	1/7/2022	L-6 Rs.25300-80500	52982
180	Prem Bahadur	Pakhele Bahadur	M	CI-VI	Driver Gr.II	Regular	4/8/1975	9/19/1997		Directorate	9/19/2032	L-6 Rs.25300-80500	34808
181	Sashiyongdang	Imyapangba	M	CI-VI	Driver Gr.II	Regular	12/28/1964	1/2/1987		Directorate	1/2/2022	L-6 Rs.25300-80500	49414
182	Roly	Niyito Yeptho	M	CI-VIII	Driver Gr.II	Regular	8/10/1990	5/11/1988		Directorate	1/1/1935	L-6 Rs.25300-80500	24736
183	Jasper		M	CI-VI	Driver Gr.II	Regular	11/29/1971	9/16/1997		Directorate		L-6 Rs.25300-80500	43154
184	Nnio Murry		M	CI-VI	Driver Gr.II	Regular	1/6/1969	8/14/1992		Directorate		L-6 Rs.25300-80500	43154
185	OrenthongTsopoe	WobamaoTsopoe	M	CI-IV	Driver Gr.II	Regular	12/24/1977	8/2/2008		Dimapur MS	12/24/2037	L-6 Rs.25300-80500	32273
186	Tsanthungo Murry	Sabemo Murry	M	CI-VII	Driver Gr.I	Regular	2/1/1962	8/30/1988		Dimapur MS	2/1/2022	L-6 Rs.25300-80500	51812
187	Suresh Thapa	Lt.K.B.Thapa	M	CI-VIII	Driver Gr.II	Regular	1/3/1956	12/8/1997		Dimapur MS	1/3/2016	L-6 Rs.25300-80500	43154
188	PauzanZealing	Lt.Degeng	M	CI-VII	Driver Gr.II	Regular	10/10/1977	10/18/2004		Dimapur	10/31/2037	L-6 Rs.25300-80500	34410
189	VikhonuShijol	Yaphuye Shijol	M	CI-VIII	Driver Gr.II	Regular	10/24/1974	10/18/2004		Dimapur	10/31/2037	L-6 Rs.25300-80500	34410
190	Wati LKR	Ayim	M	CI-IX	Driver Gr.II	Regular	8/17/1973	9/19/1997	9/20/2007	Dimapur	9/30/2032	L-6 Rs.25300-80500	47779
191	Tito G. Aye	Ghonizu	M	PU	Driver Gr.III	Regular	7/30/1988	10/22/2014		Dimapur	7/30/2040		24736
192	Nokisangba	Takusashi	M	CI-IX	Driver Gr.III	Regular	4/25/1980	12/2//2014		Dimapur	4/30/2040		24736
193	Richard Achumi	Hevito Achuni	M	PU	Driver Gr.III	Regular	9/4/1984	11/10/2014		Dimapur	9/30/2044		24736
194	AkatoZhimomi	Vuhoje Zhimomi	M	Matriculate	Driver Gr.III	Regular	12/18/1984	10/14/2014		Dimapur	31/12/2044		24736
195	KiyekhaSema	Lt. Allu Sema	M	CI-VIII	Driver Gr.II	Regular	6/1/1969	27/7/1992	8/14/2002	Kohima	7/31/2027	L-6 Rs.25300-80500	44291
196	Khumbemo Lotha	Womomo	M	CI-VII	Driver Gr.II	Regular	3/3/1967	2/23/1987	2/8/1997	Kohima	2/28/2022	L-6 Rs.25300-80500	49741
197	Nchenlo Kemp	Lt.Gwenlo	M	BA	Driver Gr.II	Regular	3/30/1980	2/4/2008	2/4/2008	Kohima	3/31/2040	L-6 Rs.25300-80500	29933
198	Tepusatuo Kulnu	Neihovi	M	CI-VIII	Driver Gr-III	Regular	2/9/1981	10/13/2014		Kohima			18252

199	MapoKonyak	Pongkem	M	CI-VIII	Driver Gr-III	Contract	10/2/1983	11/16/2016		Kohima			18460
200	Aotongpang	Aotongpang	M	CI-VIII	Driver Gr-III	Contract	10/2/1983	21/8/2017		Kohima			18460
201	T.Temjen Jamir	I.Toka Jamir	M	CI-VIII	Driver Gr-III	Regular	6/30/1981	10/10/2014		Mokokchung	6/30/2041		23739
202	Tsuktimongba	Temjemkaba	M	CI-VIII	Driver Gr-III	Regular	6/10/1988	4/29/2015		Mokokchung	6/10/2048		23061
203	C.Sulim Khamniungan	Chingkong	M	CI-V	Driver Gr.II	Regular	7/5/1982	9/12/2005		Tuensang	12/31/2040	L-3 Rs.18000-56900	30752
204	KopeKronu	MesezuloKronu	M	CI-VIII	Driver Gr.II	Regular	05/07/1980	01/22/2001		Phek	01/31/2036	L-6 Rs.25300-80500	35198
205	T .Bahadur		M	CI-VIII	Driver (Fix Pay)	Fix Pay	05/07/1978	01/22/2007		Kohima	01/31/2036		16009
206	Z.Vikato	Zuhoi	M	Matriculate	Checker	Regular	7/14/1967	1/1/1900		Dimapur MS	1/1/1935	L-2 Rs.16100-50900	36602
207	Arenjenba	Senyangerba	M	BA	Checker	Regular	5/2/1977	9/13/2005		Dimapur MS	5/2/2037	L-2 Rs.16100-50900	29933
208	Hutovi Chishi	Nihokhu	M	CI-IX	Checker	Regular	1/10/1965	5/5/1994		Dimapur MS	1/10/2025	L-2 Rs.16100-50900	36602
209	Hetovi Achumi	Heshevi Achumi	M	Matriculate	Checker	Regular	3/5/1971	4/21/1994		Dimapur MS	4/21/2029	L-2 Rs.16100-50900	36602
210	Langlem Konyak	Shahba Konyak	M	CI-IX	Checker	Regular	6/2/1972	6/28/1994		Dimapur MS	6/28/2029	L-2 Rs.16100-50900	37002
211	Merentemjen	Kimayangba	M	Matriculate	Checker	Regular	12/22/1971	1/7/1994		Dimapur MS	1/7/2029	L-2 Rs.16100-50900	36602
212	Moanungba Walling	Lt.Tekataba	M	CI-IX	Checker	Regular	10/1/1968	4/21/1994		Dimapur MS	10/1/2028	L-2 Rs.16100-50900	36602
213	Rangtielu	Nampui	M	CI-IX	Checker	Regular	4/4/1976	4/24/1994		Dimapur MS	4/24/2029	L-2 Rs.16100-50900	37402
214	Shempa Konyak	Lt.Thoakwang	M	CI-IX	Checker	Regular	9/27/1969	5/27/1994		Dimapur MS	5/27/2029	L-2 Rs.16100-50900	36602
215	T.Nikheto Sema	Tokiye	M	Matriculate	Checker	Regular	4/4/1971	5/25/1994		Dimapur MS	5/25/2029	L-2 Rs.16100-50900	36602
216	K.Tochi	Keoren	M	Matriculate	Checker	Regular	5/3/1975	4/30/1994		Dimapur MS	4/30/2029	L-2 Rs.16100-50900	37402
217	Limatongzuk	R.Imcha Ao	M	Matriculate	Checker	Regular	11/26/1968	9/5/1996		Dimapur MS	11/26/2028	L-2 Rs.16100-50900	36602
218	I.RangdyoOdyuo	Innio Odyuo	M	Matriculate	Checker	Regular	12/25/1979	3/18/1998		Dimapur MS	3/18/2033	L-2 Rs.16100-50900	36349
219	N.Hotoli	Lt.Nihoto Sumi	F	Matriculate	Checker	Regular	9/29/1976	9/7/2001		Dimapur MS	9/7/2036	L-2 Rs.16100-50900	31688
220	Imtiyanger	Imposangba	M	PU	Checker	Regular	6/5/1983	6/9/2005		Dimapur MS	6/9/2040	L-2 Rs.16100-50900	29933
221	Jankhokam	Lt.Chugjakhup Hangsing	M	CI-IX	Checker	Regular	4/13/1987	8/9/2005		Dimapur MS	8/9/2040	L-2 Rs.16100-50900	29933
222	Aman Konyak	BangboKonyak	M	PU	Checker	Regular	6/24/1986	9/9/2005		Dimapur MS	9/9/2040	L-2 Rs.16100-50900	36602
223	Masilhousier	Lt.Korulhou	M	CI-IX	Checker	Regular	10/30/1983	5/6/2005		Dimapur MS	5/6/2040	L-2 Rs.16100-50900	29933
224	M.Sentiyanger	Mangmesoba	M	Matriculate	Checker	Regular	7/7/1979	2/9/2005		Dimapur MS	7/7/2039	L-2 Rs.16100-50900	29933
225	Meren Pongener	T.Chubatemjen Jamir	M		Checker	Regular	2/26/1984	9/9/2005		Dimapur MS	9/9/2040	L-2 Rs.16100-50900	36602
226	Vilato Thira	Huzhoyo Thira	M	CI-IX	Checker	Regular	10/1/1978	3/9/2005		Dimapur MS	10/1/2038	L-2 Rs.16100-50900	29933
227	Neivizokho Kense	KelhouchaKense	M	PU	Checker	Regular	3/5/1985	5/2/2008		Dimapur MS	5/2/2043	L-2 Rs.16100-50900	28393
228	Z.HotoluYepthomi	Zhukishe	F		Checker	Contract	2/26/1984	3/3/2015		District	2/26/2044	L-2 Rs.16100-50900	21626
229	Pongshen Jamir		M		Checker	Regular				Dimapur MS	10/1/2038	L-2 Rs.16100-50900	30733
230	Alemwati	Tiameren	M	CI-VIII	Duftry	Regular	1/10/1965	11/7/1987		Directorate	11/7/2022	L-2 Rs.16100-50900	35535
231	Sungtinaro				Peon					Directorate		L-1 Rs.15500-49400	18935

232	Tongpanglepden	Tzuenlepden	M	CI-IX	Peon	Regular	1/4/1968	8/20/1992		Directorate	8/20/2027	L-1 Rs.15500-49400	36602
233	Kedutso Their	Tshulo	M	CI-VII	Peon	Regular	2/2/1985	10/18/2004		Directorate	10/18/2039	L-1 Rs.15500-49400	28412
234	Asakho	Khriechozo	M	Matriculate	Peon	Regular	2/4/1979	10/10/2004			2/4/2039	L-1 Rs.15500-49400	28812
235	Lily Murry	Opemo	F	PU	Peon	Regular	2/4/1979	1/18/2004		Directorate	1/18/2039	L-1 Rs.15500-49400	27593
236	Lenkhamong Ganti	Sukholem	M	CI-VII	Peon	Regular	7/14/1975	3/9/2005		Directorate	7/14/2035	L-1 Rs.15500-49400	34730
237	Tsito Rhakho	Lt.Ketsulhoukho	M	PU	Peon	Regular	9/1/1989	2/5/2008		Directorate	2/5/2043	L-1 Rs.15500-49400	26774
238	Zubeni	Lenthe	F	CI-VIII	Peon	Regular	3/11/1980	5/2/2008		Directorate	3/11/2040	L-1 Rs.15500-49400	26774
239	Thilixu Aye	Lt. Xukishe Aye	M	CL-VII	Peon	Regular	5/11/1982	10/12/2014		Directorate	5/11/2042	L-1 Rs.15500-49400	21860
240	Lokhoto Kapuh		M	CL-VII	Personal Peon	Fixed	3/15/1982	10/12/201		Directorate		L-1 Rs.15500-49400	3450
241	Lichumbeni		F	PU	Computer Operator	Fixed		10/12/2014		Directorate		L-1 Rs.15500-49400	3450
242	Imchizungla		F	CI-X	Peon	Fixed		10/12/2014		Directorate		L-1 Rs.15500-49400	3450
243	Wochumo	BenrioLotha	M	CI-IX	Peon	Regular	10/28/1968	8/9/1997		Dimapur MS	10/28/2028	L-1 Rs.15500-49400	32858
244	Akheto	Azhive	M	CI-X	Peon	Regular	2/19/1971	8/9/1997		Dimapur MS	2/19/2031	L-1 Rs.15500-49400	33658
245	AtoiSema	Zuheche	M	CI-IX	Peon	Regular	6/26/1969	9/25/1997		Dimapur MS	6/26/2029	L-1 Rs.15500-49400	33658
246	Artong	Imnamayang	M	CI-VI	Peon	Regular	5/29/1987	4/2/2008		Dimapur MS	4/2/2043	L-1 Rs.15500-49400	26774
247	Anato Sema	G.Khehovi	M	CI-IX	Peon	Regular	1/27/1985	10/18/2004		Dimapur MS	10/18/2039	L-1 Rs.15500-49400	30733
248	P.Tinglie Konyak	Pumen	M	CI-X	Peon	Regular	2/23/1993	11/26/2014		Dimapur	11/30/2049	L-1 Rs.15500-49400	22029
249	H.Wangsha Konyak	Lt.Honkhen	M	Matriculate	Peon	Regular	4/15/1988	10/15/2014		Dimapur	4/30/2048	L-1 Rs.15500-49400	22029
250	Imnasangba	Imtjungshi	M	CI-	Peon	Regular	1/26/1992	11/5//2014		Dimapur	11/30/2042	L-1 Rs.15500-49400	22029
251	Bennithung Murry	A.Chungirao	M	CI-X	Peon	Regular	10/7/1990	10/13/2014		Dimapur	10/31/2049	L-1 Rs.15500-49400	22029
252	Kedoksetuo Vimera	Lt.Houzolie	M	CI-VI	Peon	Regular	1/15/1974	2/5/2008		Dimapur	10/31/2034	L-1 Rs.15500-49400	27785
253	Moamonger	Yapanglemba	M	BA	Peon	Regular	9/4/1981	11/112004		Dimapur	11/30/2039	L-1 Rs.15500-49400	28595
254	Sangbun	Lt.D.K.Chilak	M	CI-VI	Peon	Regular	2/25/1965	9/10/1992		Dimapur	2/28/2025	L-1 Rs.15500-49400	35210
255	Ruduovi Verie	PutseilieVarie	M	CI-V	Peon	Regular	3/1/1966	8/30/1988		Dimapur	1/31/2023	L-1 Rs.15500-49400	38766
256	Razhusielie Vesezuo	Thenuokhrielie	M	BA	Peon	Regular	9/10/1985	10/3/2014		Dimapur	10/31/2049	L-1 Rs.15500-49400	22029
257	AbemoLotha	Akomo	M	CI-V	Peon	Regular	10/7/1964	2/15/1988		Dimapur	2/28/2023	L-1 Rs.15500-49400	36102
258	I.AtubaTzudir	Lt.Tsukjem	M	CI-VIII	Peon	Regular	10/1/1963	10/22/1982		Dimapur	10/22/2017	L-1 Rs.15500-49400	
259	Tarenjungla	Ponatemjen	F	Matriculate	Peon	Regular	11/10/1982	11/21/2016		Dimapur	11/30/2042	L-1 Rs.15500-49400	20844
260	AlemlaLongchar	Lt.Tongpang	F	Matriculate	Peon	Regular	10/13/1981	04/17/2017		Dimapur	10/31/2041	L-1 Rs.15500-49400	20844
261	Kito Temi	VinohoTemi	M	CI-VIII	Peon	Regular	10/2/1996	20/9/2017		Kohima		L-1 Rs.15500-49400	16009
262	LhiwepreLasuh	Mesethinyi	M	CI-VII	Peon	Regular	3/2/1977	9/2/2005		Kohima	3/2/2037	L-1 Rs.15500-49400	27993
263	KevizelieVenuh	Lt.Khinyi	M	CI-VI	Peon	Regular	3/6/1972	10/8/1992		Kohima	10/31/2027	L-1 Rs.15500-49400	33973
264	Zevilhoulie	Lt.Viu	M	BA	Peon	Regular	5/6/1984	6/3/2011		Kohima	5/31/2044	L-1 Rs.15500-49400	22673

265	Tej Bahadur	Bishnu Bahadur	M	CI-VII	Peon	Regular	1/17/1996	9/26/2014		Kohima	9/30/2049	L-1 Rs.15500-49400	16009
266	KevitsonuoTepudil	Lt. Neisa	F	CI-VIII	Peon	Regular	4/4/1979	11/20/2014		Kohima	4/30/2039	L-1 Rs.15500-49400	16009
267	M. Longthah Phom	Moknyu	M	CI-VIII	Peon	Regular	10/5/1964	10/15/1984		Mon	10/30/2019	L-1 Rs.15500-49400	41684
268	P.Chingyah Konyak	Pongoi Konyak	M	CI-VIII	Peon	Regular	6/8/1995	6/9/2018		Mon	10/30/2017	L-1 Rs.15500-49400	19520
269	Yashirenla	Imtimeren	F	CI-IX	Peon	Regular	7/30/1989	11/20/2017		Mon	11/31/2052	L-1 Rs.15500-49400	16499
270	Chubangangtet	Nukshikaba	M	Matriculate	Peon	Regular	10/23/1975	09/08/1997		Mokokchung	2032	L-1 Rs.15500-49400	31258
271	Benjungkumba	Pangjungnuke	M	CI-III	Peon	Regular	2/7/1980	10/13/2014		Mokokchung	2/7/2040	L-1 Rs.15500-49400	20523
272	O.Among Sanglir	I. Olem Sanglir	M	Matriculate	Peon	Regular	8/24/1988	2/9/2015		Mokokchung	8/24/2048	L-1 Rs.15500-49400	20523
273	Sashimongla	meyilepzuk	M	PU	Peon	Regular	11/15/1985	11/5/2005		Mokokchung	11/5/2040	L-1 Rs.15500-49400	26286
274	Lanuonan	Lt. Tali	M	CI-X	Peon	Fixed	11/8/1978	6/28/2011		Mokokchung	11/8/2038	L-1 Rs.15500-49400	3450
275	KewekoMerhu	Zhienglo	M	Matriculate	Peon	Regular	05/25/1979	09/03/2005		Mokokchung	05/25/2039	L-1 Rs.15500-49400	26286
276	DevotoVenuh	PuchoneyiVenuh	M	CI-X	Peon	Regular	05/08/1985	6/22/2015		Phek	10/31/2045	L-1 Rs.15500-49400	21490
277	Kekhwengulo	Lt. Dichu	M	CI-VIII	Peon	Regular	08/11/1968	02/02/1987		Phek	02/28/2022	L-1 Rs.15500-49400	40444
278	C.Koniyemjong	C. Chuba Chang	M	CI-	Peon	Regular	7/19/1985	10/18/2004		Tuensang	10/18/2039	L-1 Rs.15500-49400	28393
279	I. Moba Chang	Imlongchuba	M	BA	Peon	Regular	5/5/1975	10/18/2004		Tuensang	5/5/2035	L-1 Rs.15500-49400	28393
280	L. Shiangnia Khaimniungan	Layang	M	UnderMatric	Peon		11/5/1985	8/1/2016		Tuensang	8/31/2045	L-1 Rs.15500-49400	21490
284	Tensomong J Sangtam	Joshua	M	Matriculate	Peon		10/12/1993	10/09/2014		Tuensang	10/31/2049	L-1 Rs.15500-49400	21860
285	Chumchamo Patton	Z.Chonchio Patton	F	Matriculate	Peon	Regular	12/12/1980	6/3/2011		Wokha	12/31/2040	L-1 Rs.15500-49400	24649
286	Ezanyimo Ngullie	NzioNgullie	M	CI-VIII	Peon	Regular	3/8/1963	8/12/1992		Wokha	8/31/2023	L-1 Rs.15500-49400	35530
287	Kugaho Sumi	Zhehovi	M	CI-VIII	Peon	Regular	5/16/1980	11/11/2014		Zunheboto	10/31/2039	L-1 Rs.15500-49400	29560
288	K.Kakheho Sumi	KhettoviSema	M	CI-VII	Peon	Regular	03/03/1964	06/24/1987		Zunheboto	06/30/2022	L-1 Rs.15500-49400	39516
288	S. Liho Sumi	Ghoshika	F	CI-VIII	Peon	Regular	08/23/1982	11/25/2014		Zunheboto	11/31/2042	L-1 Rs.15500-49400	22424
289	C.Thango Chang	M.Beso Chang	M	CI-X	Sweeper	Regular	4/6/1989	1/1/1900		Tuensang	1/1/1935	L-2 Rs.16100-50900	22660
290	Chamchano Lotha	YanbemoLotha	F	CI-IX	Sweeper	Regular	9/7/1980	9/15/2013		Directorate	9/7/2040	L-2 Rs.16100-50900	23245
291	Imlirenla	Sakutoshi	F	Matriculate	Sweeper	Regular	9/27/1979	2/11/2008		Mokokchung	9/27/2039	L-2 Rs.16100-50900	25608
292	Kevilhhou-ii	Rheichanyii	F	CI-VII	Sweeper	Regular	12/18/1976	10/18/2004		Kohima	10/31/2036	L-2 Rs.16100-50900	27324
293	NzanoLotha	Zurenthung	F	CI-VII	Sweeper	Fix	3/10/1959	7/17/1996		Kohima		L-2 Rs.16100-50900	16009
294	LobeniLotha	ChamongoLotha	F	CI-VIII	Sweeper	Regular	5/14/1965	2/17/1987		Wokha	2/28/2022	L-2 Rs.16100-50900	37889
295	PongshomKonyak	Achung	F	CI-VII	Sweeper	Regular	5/8/1961	10/30/1984		Mon	10/30/2019	L-2 Rs.16100-50900	41614
296	K. Semato	Lt. Kiyekhu	M	CI-VIII	Sweeper	Regular	12/17/1990	6/1/2016		Zunheboto	6/30/2050	L-2 Rs.16100-50900	22424
297	Zonie-o Koza	Lt. Solhou	F	CI-IV	Sweeper	Regular	05/15/1985	06/06/2011		Phek	05/31/2045	L-2 Rs.16100-50900	24649
298	Phyobenthang	Chemirao	M	CI-IV	Sweeper	Regular	4/18/1980	2/5/2008		Dimapur	4/30/2040	L-2 Rs.16100-50900	27785
299	Meyesunep		M	CI-X	Chowkider	Regular				Directorate		L-1 Rs.15500-49400	24998

300	Imlitoshi	Samatemsu	M	CI-VIII	Chowkider	Regular	12/23/1980	2/5/2008		Dimapur	12/31/2040	L-1 Rs.15500-49400	25919
301	KhrieneizoMetha	Lt.Vilalie	M	CI-IX	Chowkidar	Regular	10/10/1980	10/18/2004		Kohima	10/31/2039	L-1 Rs.15500-49400	28412
302	Khongam Konyak	Womgtok Konyak	M	CI-VIII	Chowkidar	Regular	12/02/1997	11/20/2017		Mon	11/30/2052	L-1 Rs.15500-49400	16499
303	Temjensowa	LT TSUKJEM	M	Matriculate	Chowkidar	Regular	5/21/1971	9/1/1977		Mokokchung	9/1/2012	L-1 Rs.15500-49400	31258
304	Yangseri Sangtam	Lt. Tsalito	M	CI-VI	Chowkidar	Regular	7/21/1986	11/5/2005		Tuensang	11/5/2040	L-1 Rs.15500-49400	29212
305	ZareniLotha	YisaoLotha	M	CI-VII	Chowkidar	Regular	2/15/1984	3/11/2002		Wokha	3/31/2037	L-1 Rs.15500-49400	27574
306	Kedoutsolhi	Lt. Chizu	M	CI-VI	Chowkidar	Regular	12/10/1973	3/23/1998		Phek	3/31/2033	L-1 Rs.15500-49400	34594
307	Mugatoli Zhimomi	Lt. TonitoZhimomi	M	CI-12 th	Chowkider	Regular	12/1/1985	10/09/2014		Zunheboto	10/09/2045	L-1 Rs.15500-49400	22424
308	Phyobenthung	Chimroa	M	PUC	Mali	Regular	4/18/1980	11/1/2004		Dimapur	11/1/2039	L-1 Rs.15500-49400	27785

MANUAL-XI

The budget allocated to each of its agency, indicating the particulars of all plans, proposed expenditure and reports on disbursements made:

BE&RE 2018-19

(Rs. in Lakhs)

Sl. No	Items of Expenditures	Actuals 2016-17	Total Provision in BE2017-18as printed in Demands for Grand's	Total Provision now proposed by the Deptt.in RE2016-18	Additional Provision proposed (col.5-4)
1	2	3	4	5	6
1	Salary	1097.05	1204.76	1223.32	18.56
2	Wages	2.97	2052	4.02	1.50
3	Travel Expenses	22.99	10.00	25.00	15.00
4	Office Expenses	53.00	18.00	68.00	50.00
5	Motor Vehicles	72.80	35.65	52.65	17.00
6	Rent, Rates & Taxes	10.86	9.00	11.00	2.00
7	Materials & Supplies				
8	Machinery & Equipment				
9	Repairs & Maintenance	99.97	80.00	100.00	20.00

10	Minor Works				
11	Professional & Special Service	50.39			
12	Grant- in- aid				
13	Advertisement & Publicity/ Plablication	24.91	15.00	30.00	15.00
14	Others (to specify)(Training)	10.00	5.00	20.00	15.00
15	Equity Share G&ST	15.00	23.00	23.00	---
16	MACT				
17	GRAND TOTAL:-				

Final expenditure during 2018-19

(Rs. in Lakhs)

Head of Account	Departmental Figures	
	Plan	Non-Plan
2040 Sales Tax		
001 – Direction & Admn		
Salaries	-NIL-	304.88
Wages	-NIL-	3.56
Travel expenses	-NIL-	13.50
Rent, rates & Taxes	-NIL-	7.50
Office expenses	-NIL-	30.90
Motor vehicle expenses	-NIL-	52.23
Publication	-NIL-	20.00
Excursion / Training	-NIL-	15.00
Contribution Empowered Committee GST	-NIL-	12.00
Maintenance	-NIL-	108.30
001 - Total	-NIL-	459.57
101-Collection Charges		
Salaries	-NIL-	1053.66
Wages	-NIL-	1.66
Travel expenses	-NIL-	11.45

Rent, rates & Taxes	-NIL-	6.07
Office expenses	-NIL-	5.10
Motor vehicle expenses	-NIL-	6.44
Plan	-NIL-	
101 – Total	-NIL-	1084.38
001+101 = Grand Total	-NIL-	1652.25
Plan, Non-Plan Grand Total (1652.25)		

(Rs. in Lakhs)

Head of Account	State Plan	Negotiated Loan	Total
4059-Capital outlay public Works			
Construction	50.00	100.00	150.00

MANUAL-XII

The manner of execution of subsidy programmes, including the amounts allocated and the details of beneficiaries of such programmes:

Not applicable to this Directorate.

MANUAL-XIII

Particulars of recipients of concessions, permits or authorizations granted by it:

Not applicable

MANUAL-XIV

Details in respect of the information available or held by it, reduced in an electronic form:

GST: To make a common tax law for all the states and a common market, all other taxes like Excise, Vat, Customs etc were subsumed and Goods and Services Tax (GST) Act, was introduced in the country from 1st July, 2017. Details relating to GST can be accessed through a common portal www.gst.gov.in. It can be accessed for GST registration, after which, he can file returns, make online payment of tax etc.

Other Acts and Laws: Details of information relating to dealers registration numbers (TIN) under various tax laws and records of payment of Tax by such dealers are held by the Superintendent of Taxes of the Ward/District in-charge. Types of information available in electronic forms in www.nagalandtax.nic.in are as follows:

- i. All Acts and Rules of Taxation Laws administered by the department. GST/VAT, CST etc.
- ii. Up to date amended rate of tax in the schedules.
- iii. User manual for 'taxsoft' application.
- iv. Tax awareness capsules.
- v. List of all e-services.
- vi. All the important Circulars and Notification including Gazette notifications with regard to taxation matters, whichever are necessary for public importance.
- vii. Annual Administrative Reports since 2009-10.
- viii. RTI manual.
- ix. Statistics.
- x. Contact details of senior officers.

*Details information available in electronic forms at www.nagalandtax.nic.in

MANUAL-XV

The particulars of information available to citizens for obtaining information, including the working hours of library or reading room, if maintained for public use:

There is no library room maintained by the department for public use. Application forms for registration, declarations and statutory forms, Clearance Certificate and Payment Challan Forms etc. are available in all the District Tax Offices. Any tax payer requiring such forms or any tax information may obtain the same from the Superintendent of Taxes of the District concern on all working days. **Help desk counter and websites:** The department helpdesk number is **03862248132** and the website is www.nagalandtax.nic.in

Office timing:

Morning	Evening
10:00 A.M	4:00 P.M

MANUAL-XVI

The names, designations and particulars of the Public Information Officers:

Sl. No.	Name of PIOs& APIO	Designation	Jurisdiction/District/Zones	Appellate authority
1.	Shri C Lima Imsong	Deputy Commissioner of State Taxes (HQ)	Directorate Dimapur	Commissioner of State Taxes
2.	Shri. Imosong Imsong	Deputy Commissioner of State Taxes	Dimapur	Commissioner of Sate Taxes
3.	Smti. Areni Patton	Deputy Commissioner of State Taxes	Kohima	Commissioner of State Taxes
4.	Smti. Lirila Sangtam	Deputy Commissioner of State Taxes	Mokokchung	Commissioner of State Taxes
5.	Shri. Atener Aier	Superintendent of State Taxes	Wokha	Commissioner of State Taxes
6.	Shri. Vekhozo Dozo	Superintendent of State Taxes	Phek	Commissioner of State Taxes
7.	Shri. Y.Toshi Yimchunger	Superintendent of State Taxes	Mon	Commissioner of State Taxes
8.	Smti. Cheivitsu	Superintendent of State Taxes	Zunheboto	Commissioner of State Taxes
9.	Shri.Y.Chuntuk Phom	Superintendent of State Taxes	Tuensang, Kiphire & Longleng	Commissioner of State Taxes

MANUAL-XVII

Such other information as may be prescribed:

Since the inception of the Department, the Department has been extending all possible assistance to the Tax Payers and facilitated them to comply with the provisions of the Tax Laws Enforced in the State.

The RTI Act 2005 is actively enforced in the Department in letter and in spirit to maintain utmost transparency and accountability in its official dealings and functioning. The Department has designated the Directorate to facilitate the citizens with any tax information or any information about the activities and functioning of the Department as a matter of right.

This information Manual is updated as on March 31st 2019.

(C.LIMA IMSONG)
Deputy Commissioner of State Taxes (HQ)
Nagaland: Dimapur.